

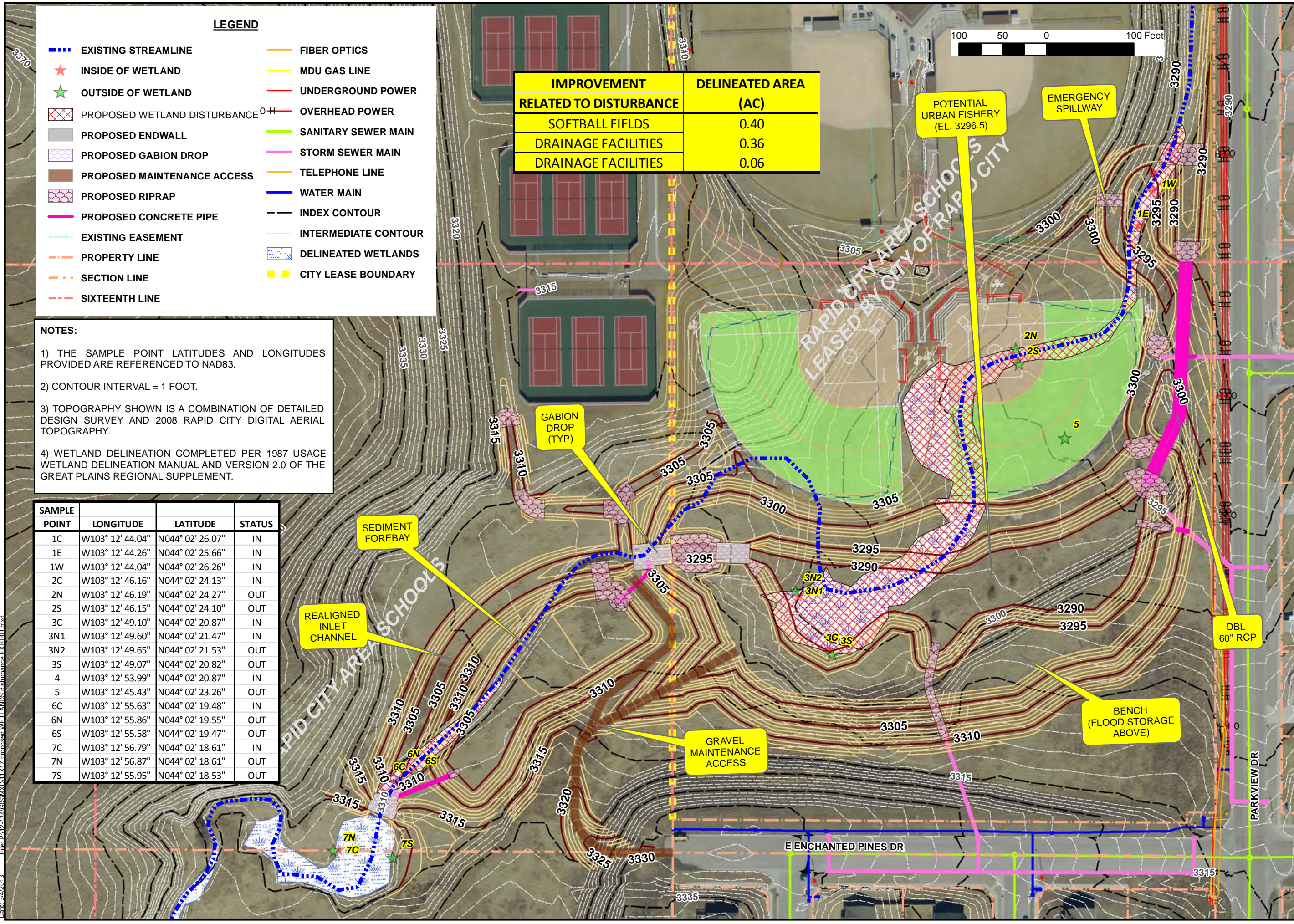
LEGEND

- ▬▬▬ EXISTING STREAMLINE
- ★ INSIDE OF WETLAND
- ★ OUTSIDE OF WETLAND
- PROPOSED WETLAND DISTURBANCE
- PROPOSED ENDWALL
- PROPOSED GABION DROP
- PROPOSED MAINTENANCE ACCESS
- PROPOSED RIPRAP
- PROPOSED CONCRETE PIPE
- EXISTING EASEMENT
- PROPERTY LINE
- SECTION LINE
- SIXTEENTH LINE
- ▬ FIBER OPTICS
- ▬ MDU GAS LINE
- ▬ UNDERGROUND POWER
- ▬ OVERHEAD POWER
- ▬ SANITARY SEWER MAIN
- ▬ STORM SEWER MAIN
- ▬ TELEPHONE LINE
- ▬ WATER MAIN
- ▬ INDEX CONTOUR
- ▬ INTERMEDIATE CONTOUR
- DELINEATED WETLANDS
- CITY LEASE BOUNDARY

IMPROVEMENT RELATED TO DISTURBANCE	DELINEATED AREA (AC)
SOFTBALL FIELDS	0.40
DRAINAGE FACILITIES	0.36
DRAINAGE FACILITIES	0.06

- NOTES:**
- 1) THE SAMPLE POINT LATITUDES AND LONGITUDES PROVIDED ARE REFERENCED TO NAD83.
 - 2) CONTOUR INTERVAL = 1 FOOT.
 - 3) TOPOGRAPHY SHOWN IS A COMBINATION OF DETAILED DESIGN SURVEY AND 2008 RAPID CITY DIGITAL AERIAL TOPOGRAPHY.
 - 4) WETLAND DELINEATION COMPLETED PER 1987 USACE WETLAND DELINEATION MANUAL AND VERSION 2.0 OF THE GREAT PLAINS REGIONAL SUPPLEMENT.

SAMPLE POINT	LONGITUDE	LATITUDE	STATUS
1C	W103° 12' 44.04"	N044° 02' 26.07"	IN
1E	W103° 12' 44.26"	N044° 02' 25.66"	IN
1W	W103° 12' 44.04"	N044° 02' 26.26"	IN
2C	W103° 12' 46.16"	N044° 02' 24.13"	IN
2N	W103° 12' 46.19"	N044° 02' 24.27"	OUT
2S	W103° 12' 46.15"	N044° 02' 24.10"	OUT
3C	W103° 12' 49.10"	N044° 02' 20.87"	IN
3N1	W103° 12' 49.60"	N044° 02' 21.47"	IN
3N2	W103° 12' 49.65"	N044° 02' 21.53"	OUT
3S	W103° 12' 49.07"	N044° 02' 20.82"	OUT
4	W103° 12' 53.99"	N044° 02' 20.87"	IN
5	W103° 12' 45.43"	N044° 02' 23.26"	OUT
6C	W103° 12' 55.63"	N044° 02' 19.48"	IN
6N	W103° 12' 55.86"	N044° 02' 19.55"	OUT
6S	W103° 12' 55.58"	N044° 02' 19.47"	OUT
7C	W103° 12' 56.79"	N044° 02' 18.61"	IN
7N	W103° 12' 56.87"	N044° 02' 18.61"	OUT
7S	W103° 12' 55.95"	N044° 02' 18.53"	OUT



Date: 3/4/2013 File: Pa12-13AG(S)M(X)D1117_proposed_wetlands_disturbance_EXHIBIT.mxd