

10RZ017

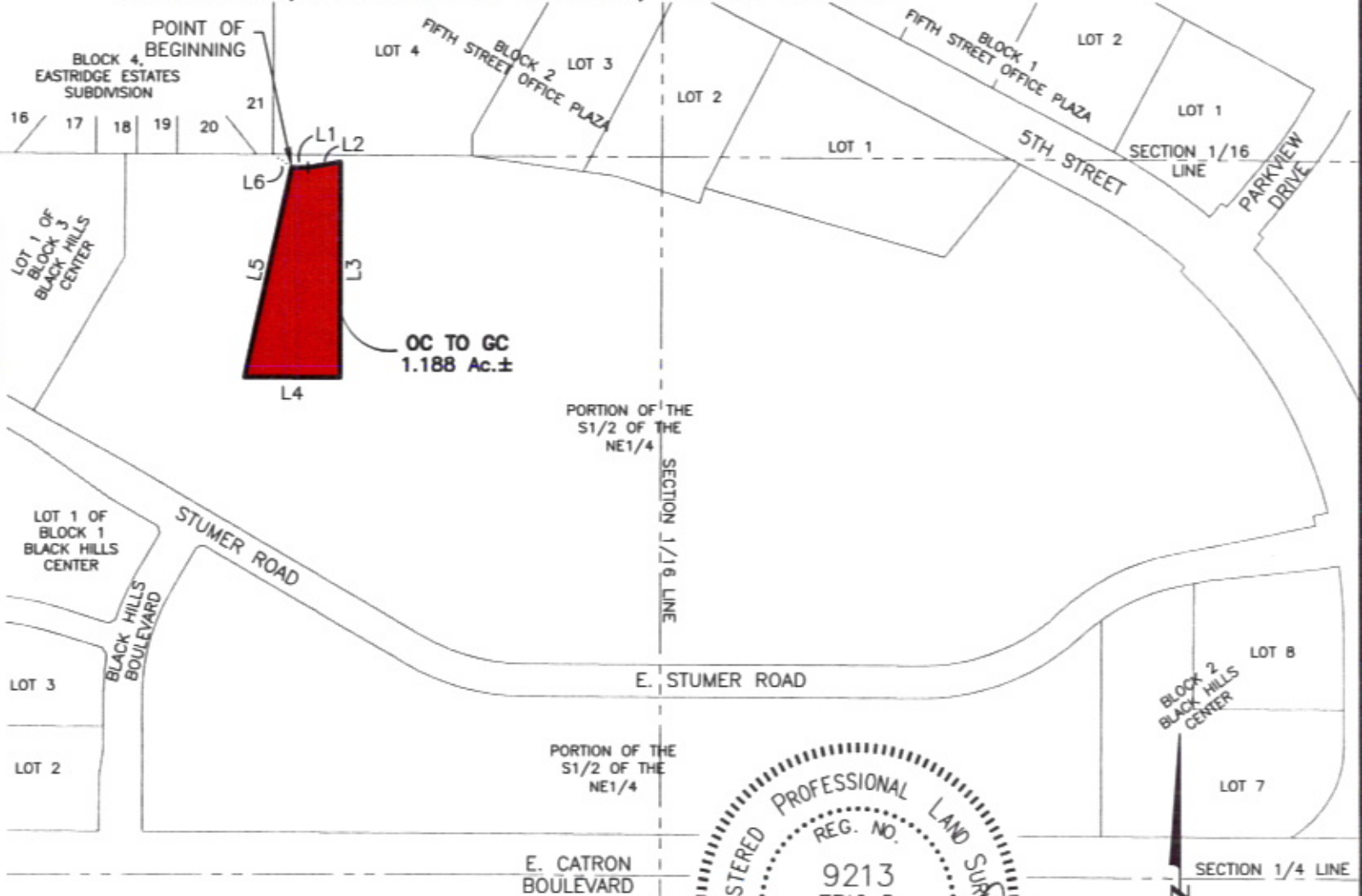
RECEIVED

FEB 26 2010

Rapid City Growth Management Department

METES AND BOUNDS  
**A PORTION OF THE SW1/4 OF THE NE1/4**  
 LOCATED IN SECTION 24, T1N, R7E, BHM  
 RAPID CITY, PENNINGTON COUNTY, SOUTH DAKOTA

LINE	LENGTH	BEARING
L1	29.43'	S89°44'01"E
L2	61.38'	N80°14'20"E
L3	397.37'	S00°00'01"E
L4	176.15'	N89°44'34"W
L5	395.82'	N12°34'56"E
L6	42.23'	S54°58'38"E



CITY HALL 1903

**RENNER & ASSOCIATES, LLC.**

616 SIXTH ST. \* RAPID CITY, SD 57701  
 PHONE: 605/721-7310 \* FAX: 605/721-7313  
 EMAIL: GARY@RENNERASSOC.COM

