

10RZ016

RECEIVED

FEB 26 2010

Rapid City Growth Management Department

METES AND BOUNDS
A PORTION OF THE S1/2 OF THE NE1/4
 LOCATED IN SECTION 24, T1N, R7E, BHM
 RAPID CITY, PENNINGTON COUNTY, SOUTH DAKOTA



LINE	LENGTH	BEARING
L1	30.39'	S81°56'11"E
L2	60.98	S81°55'52"E
L3	161.84'	S72°01'35"E
L4	2.28'	N17°47'24"E
L5	6.07'	S03°19'17"W
L6	116.68'	N83°19'13"W
L7	151.94	N54°45'41"W
L8	175.21'	S81°56'11"E

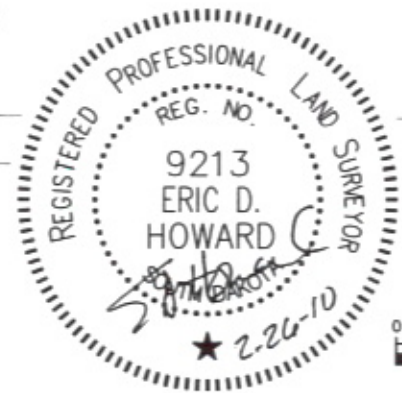
CURVE	LENGTH	RADIUS	DELTA	CHORD BEARING	CHORD DISTANCE
C1	34.95	220.67	09°04'29"	S07°51'03"W	34.92



RENNER & ASSOCIATES, LLC.

616 SIXTH ST. * RAPID CITY, SD 57701
 PHONE: 605/721-7310 * FAX: 605/721-7313
 EMAIL: GARY@RENNERASSOC.COM

CITY HALL 1903



SECTION 1/4 LINE

LOT 7

LOT 8

SECTION 1/16 LINE

LOT 1

LOT 2

LOT 3

LOT 4

LOT 5

LOT 6

LOT 1

LOT 2

LOT 3

LOT 4

LOT 5

LOT 6

LOT 7

LOT 8

SECTION 1/16 LINE

SECTION 1/4 LINE

FEBRUARY 26, 2010

0 150 300 600

SCALE 1" = 300'