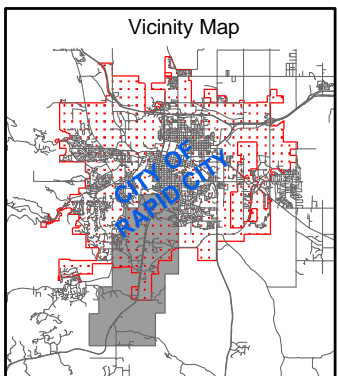
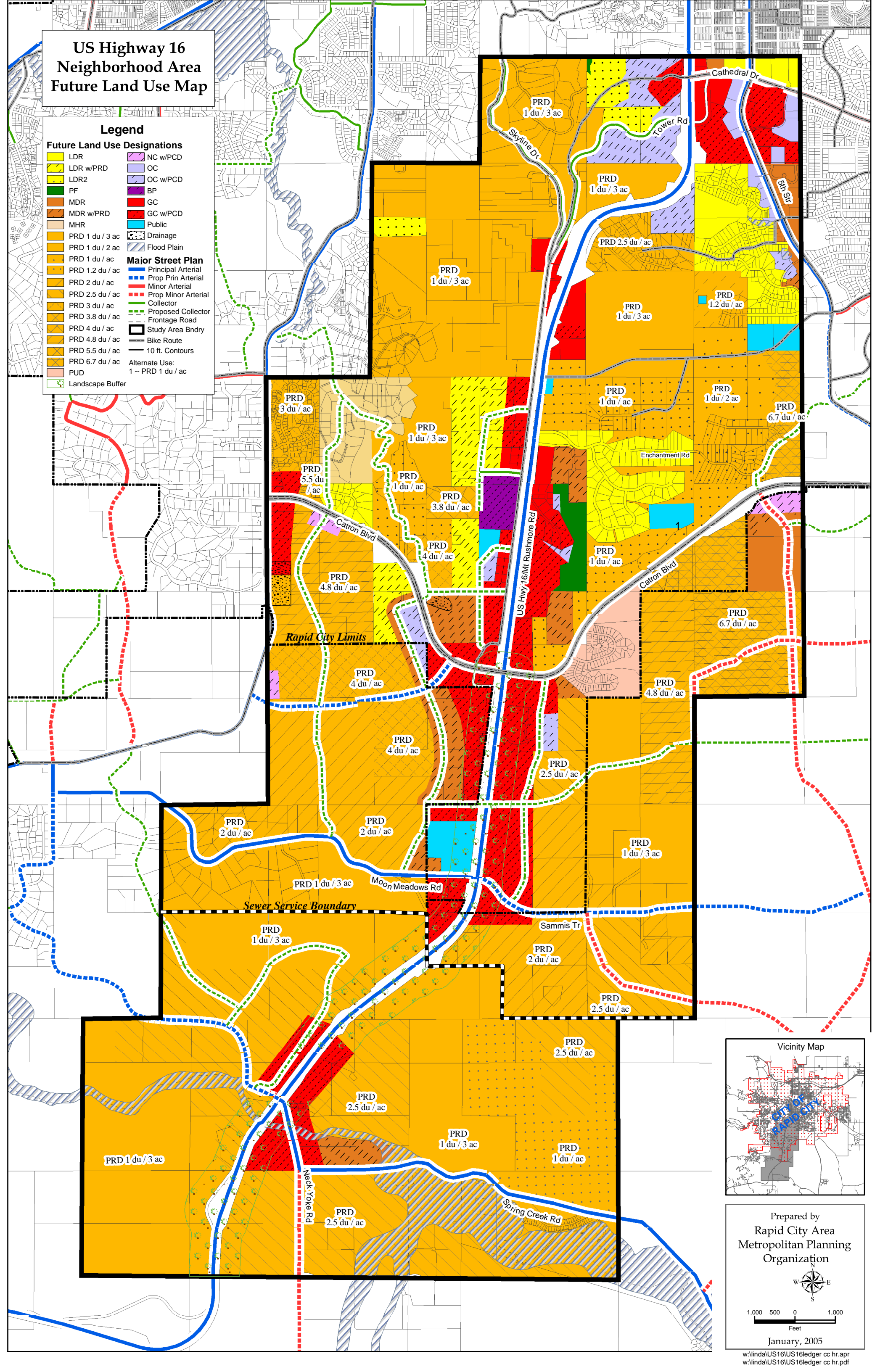


US Highway 16 Neighborhood Area Future Land Use Map

Legend

Future Land Use Designations

- | | | | |
|--|------------------|--------------------------|---------------------|
| | LDR | | NC w/PCD |
| | LDR w/PRD | | OC w/PCD |
| | LDR2 | | BP |
| | PF | | GC |
| | MDR | | GC w/PCD |
| | MDR w/PRD | | Public |
| | MHR | | Drainage |
| | PRD 1 du / 3 ac | | Flood Plain |
| | PRD 1 du / 2 ac | Major Street Plan | |
| | PRD 1 du / ac | | Principal Arterial |
| | PRD 1.2 du / ac | | Prop Prin Arterial |
| | PRD 2 du / ac | | Minor Arterial |
| | PRD 2.5 du / ac | | Prop Minor Arterial |
| | PRD 3 du / ac | | Collector |
| | PRD 3.8 du / ac | | Proposed Collector |
| | PRD 4 du / ac | | Frontage Road |
| | PRD 4.8 du / ac | | Study Area Bndry |
| | PRD 5.5 du / ac | | Bike Route |
| | PRD 6.7 du / ac | | 10 ft. Contours |
| | PRD | | Alternate Use: |
| | PRD 1 du / ac | | 1 -- PRD 1 du / ac |
| | Landscape Buffer | | |



Prepared by
Rapid City Area
Metropolitan Planning
Organization

1,000 500 0 1,000
Feet

January, 2005