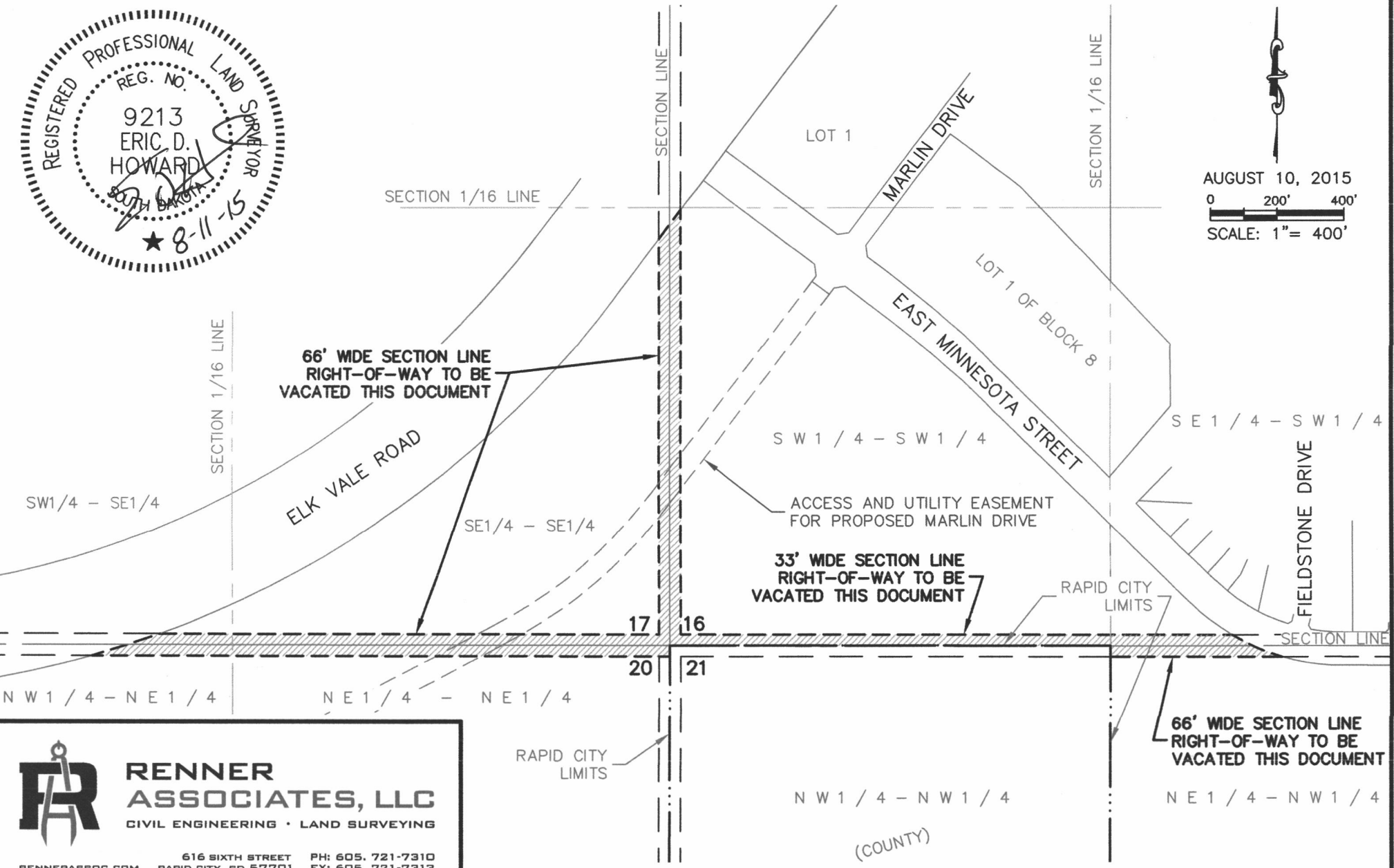
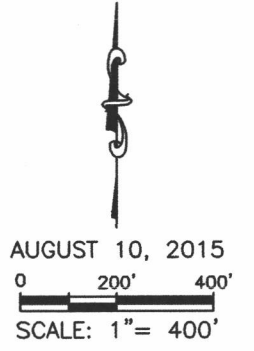


EXHIBIT 'A' SECTION LINE VACATION

LOCATED IN THE S1/2 OF SW1/4 OF SECTION 16, S1/2 OF SE1/4 OF SECTION 17, N1/2 OF NE1/4 OF SECTION 20 AND NE1/4 OF NW1/4 OF SECTION 21, ALL IN T1N, R8E, BHM, RAPID CITY, PENNINGTON COUNTY, SOUTH DAKOTA




RENNER ASSOCIATES, LLC
CIVIL ENGINEERING • LAND SURVEYING

616 SIXTH STREET PH: 605. 721-7310
RAPID CITY, SD 57701 FX: 605. 721-7313

RENNERASSOC.COM

S:\2239.118 ELKS CROSSING - PHASE 4\EASEMENTS\2239.118_SECTION LINE VACATE.dwg, 8/11/2015 7:36:05 AM