

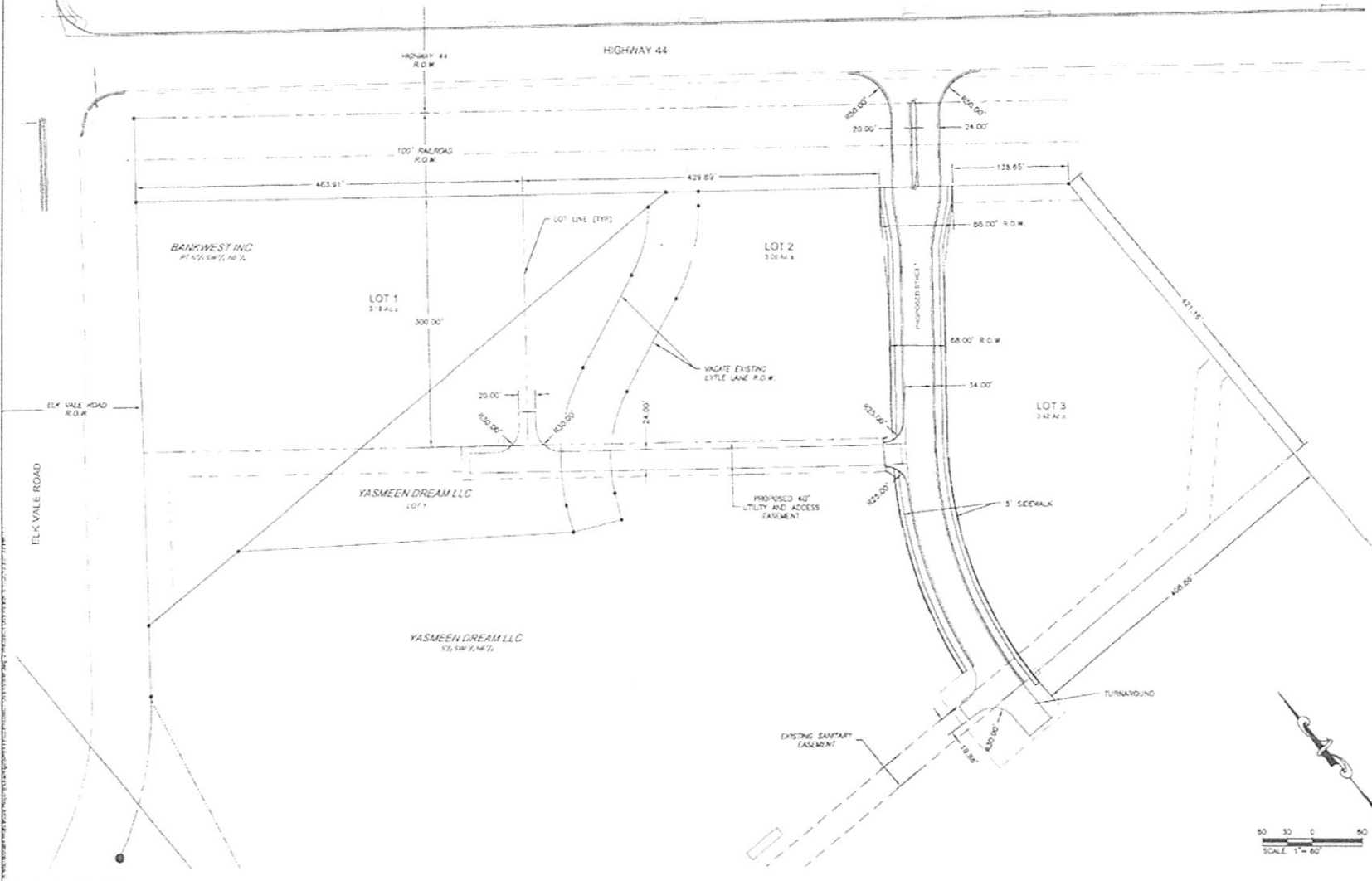
13PL049

RECEIVED

MAY 17 2013

RAPID CITY COMMUNITY PLANNING & DEVELOPMENT SERVICES

CITY OF RAPID CITY		Number
<small>There are several fee groups established in applicable governmental documents, including but not limited to engineering, architecture, and planning. The City of Rapid City does not verify the validity, accuracy or completeness of the information provided and it is the responsibility of the engineer, architect, or planner to verify the information and to provide a certificate of accuracy to the City of Rapid City.</small>		517-2213 SUBDIVISION LAYOUT PLAN
Project Name	NO	Revision
Project		
Sheet No.	Design No.	Scale No.
22-0054	135	135-0054
Submitted By	Submitted Date	
RENDER & SMOOK, LLC	08	



PRELIMINARY FOR REVIEW ONLY

**DREAM DESIGN INTERNATIONAL, INC.**  
 ENGINEERING, ARCHITECTURE,  
 LAND PLANNING, CONSTRUCTION ADMINISTRATION  
 928 KANSAS CITY STREET, RAPID CITY, SD 57701  
 PHONE: 605.348.0538 FAX: 605.348.0545 WWW.DREAMDESIGNINC.COM

ORCHARD MEADOWS  
 RAPID CITY, SOUTH DAKOTA

