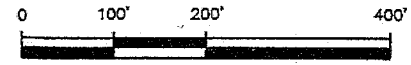


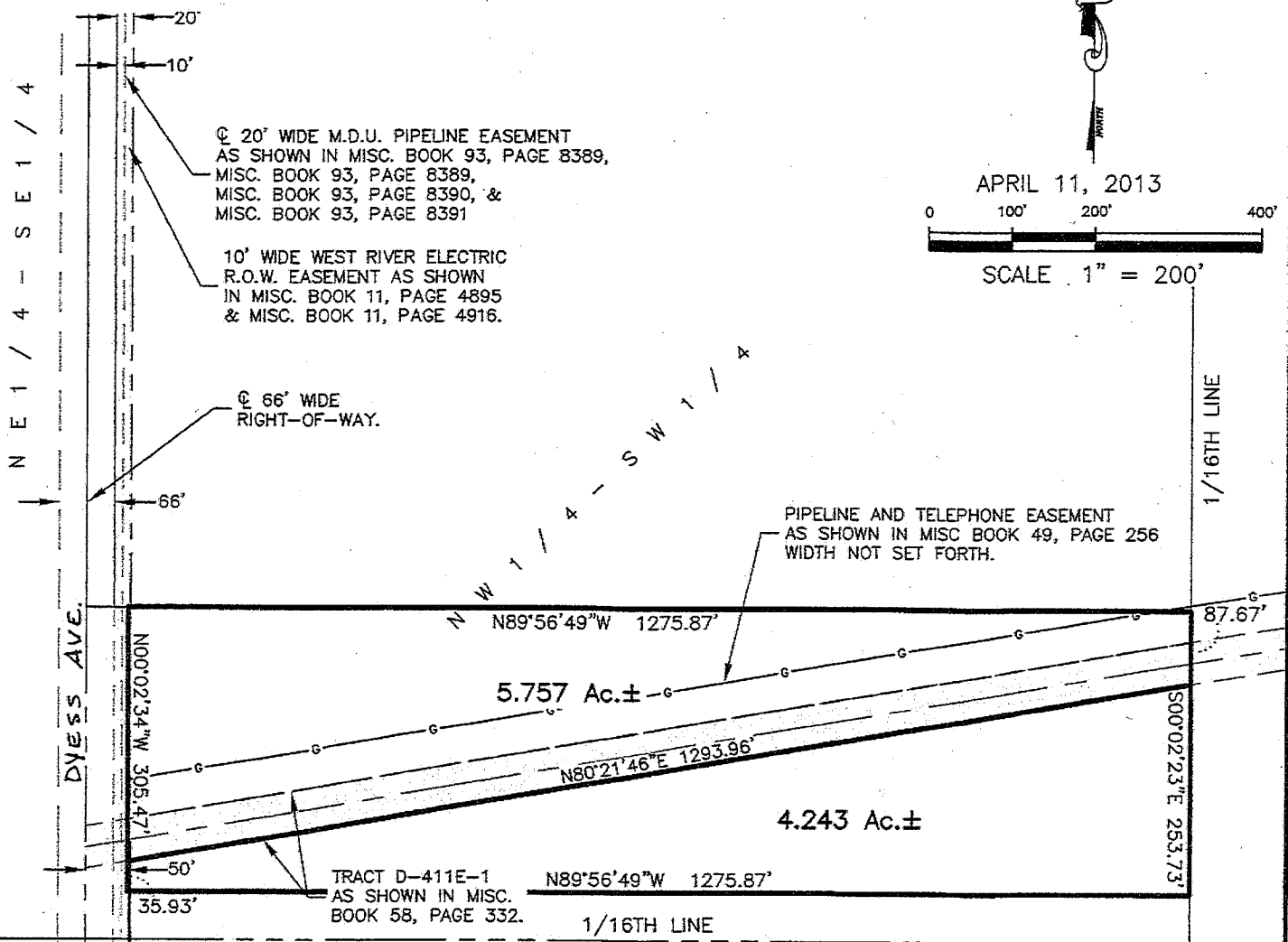
**EXHIBIT 'A'**  
**PROPOSED LOTS LOCATED IN THE NW1/4 OF THE SW1/4**  
**SECTION 21, T2N, R8E, BHM**  
**RAPID CITY, PENNINGTON COUNTY, SOUTH DAKOTA**



APRIL 11, 2013



SCALE 1" = 200'



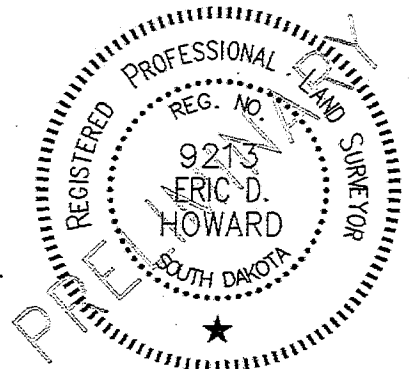
**RECEIVED**

APR 12 2013 1 / 4 - S W 1 / 4

Rapid City Community Planning  
& Development Services

**RENNER & ASSOCIATES, LLC.**

616 SIXTH ST. \* RAPID CITY, SD 57701  
 PHONE: 605/721-7310 FAX: 605/721-7313  
 SPEARFISH OFFICE: 605/717-0016



CITY HALL 1903

S:\2239.97 40AC DYESS\PROPOSED LOT LOCATION.dwg. PLOTDATE: 4/11/2013 11:20:29 AM