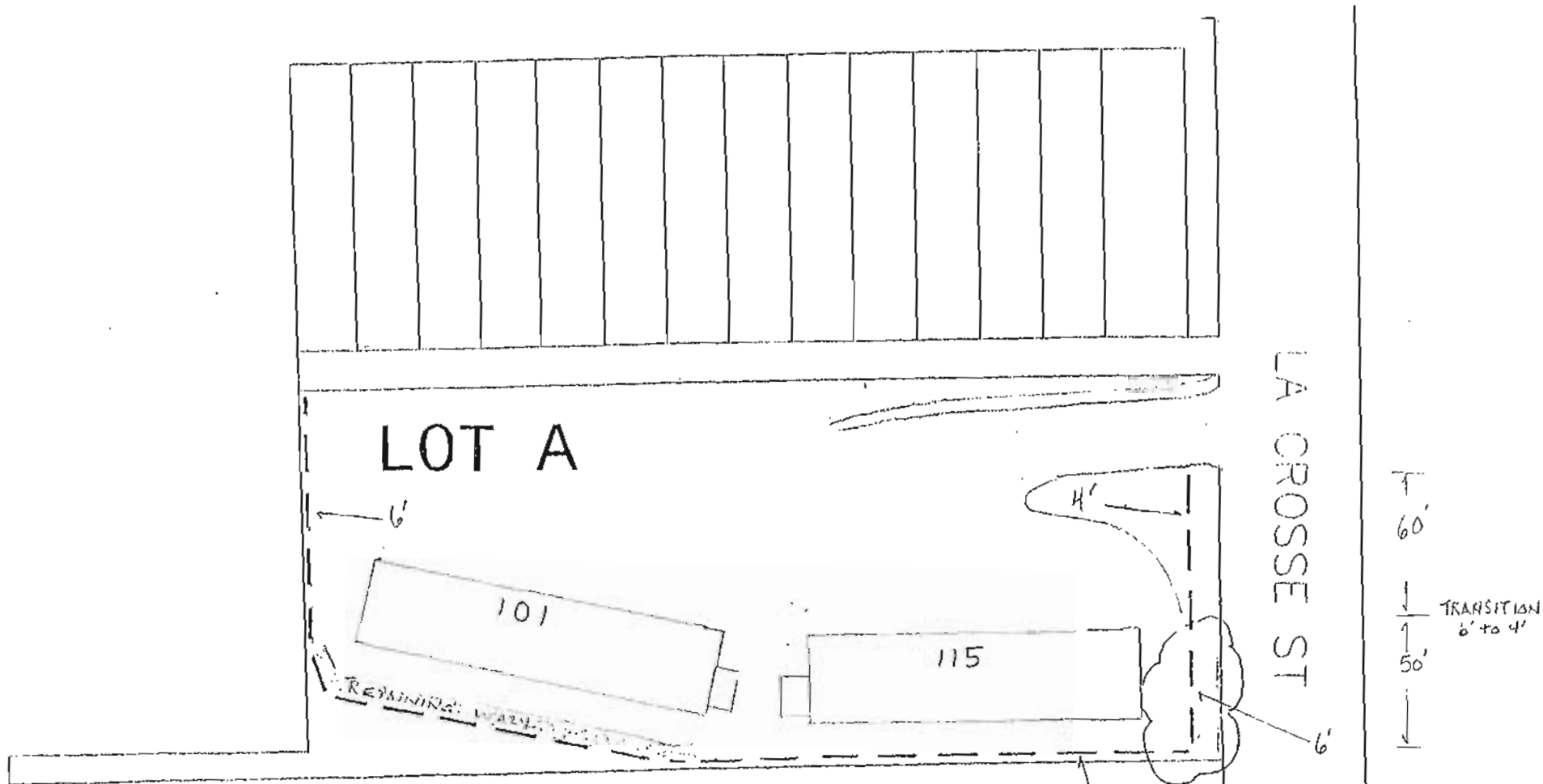


EXHIBIT A



LOT A OF BLAKES ADDITION FORMERLY LOTS 21 THROUGH 34 OF BLOCK 16, BLAKES ADDITION AND THE NORTH 40 FEET OF EAST SAINT LOUIS STREET BETWEEN RACINE STREET AND LA CROSSE STREET. ALL LOCATED IN THE SW 1/4 OF SECTION 31, T2N, R8E, BHM RAPID CITY, PENNINGTON COUNTY, SOUTH DAKOTA