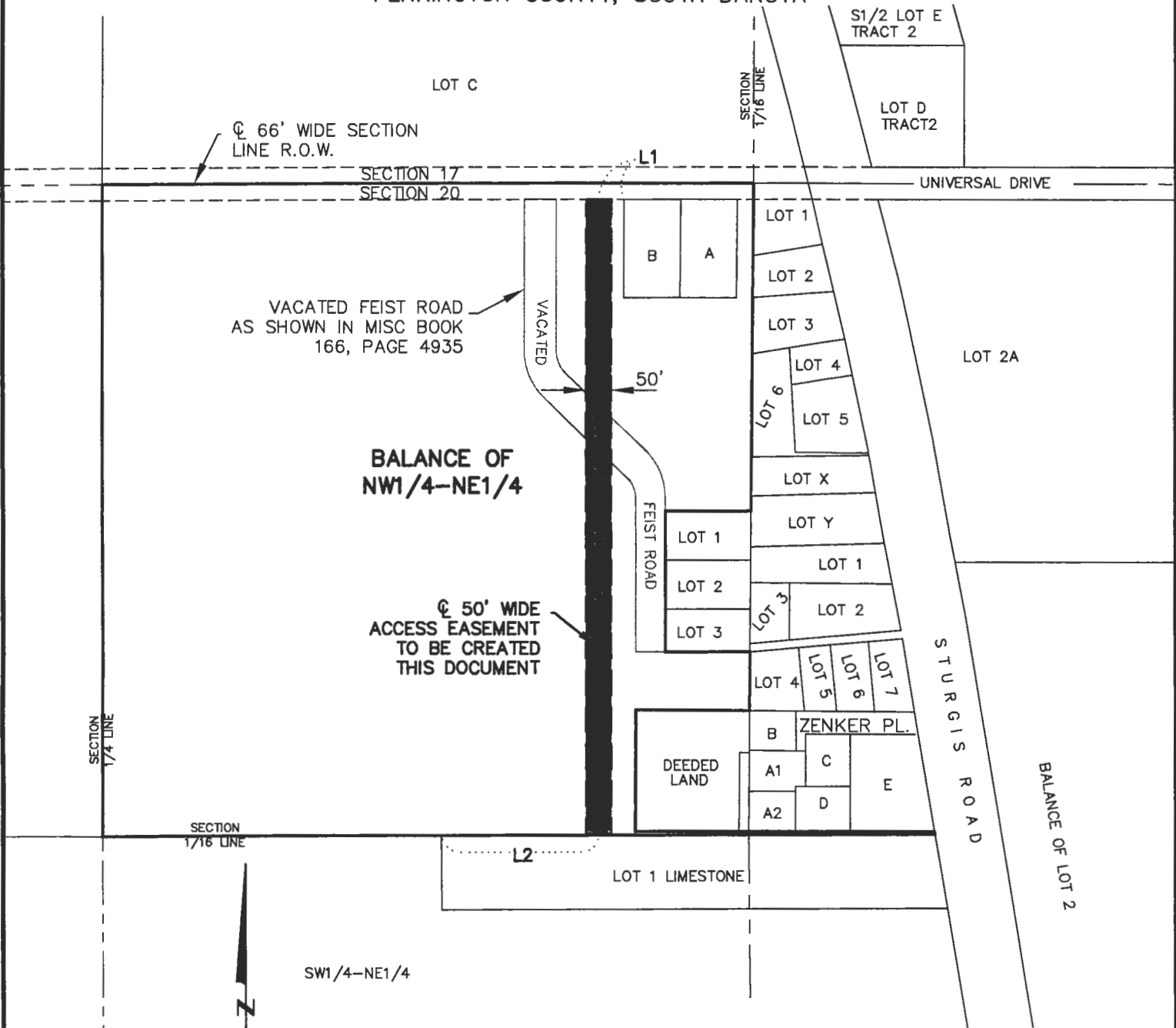


# 50' WIDE ACCESS EASEMENT OF THE BALANCE OF THE NW1/4 OF THE NE1/4

LOCATED IN THE NW1/4 OF THE NE1/4 OF SECTION 20,  
T2N, R7E, BHM  
PENNINGTON COUNTY, SOUTH DAKOTA



**BALANCE OF  
NW1/4-NE1/4**

**50' WIDE  
ACCESS EASEMENT  
TO BE CREATED  
THIS DOCUMENT**

VACATED FEIST ROAD  
AS SHOWN IN MISC BOOK  
166, PAGE 4935

SECTION  
17/4 LINE

SECTION  
17/16 LINE

SECTION  
17/16 LINE



SW1/4-NE1/4

SEPTEMBER 17, 2008



SCALE 1" = 300'

LINE	LENGTH	BEARING
L1	50.00	S89°45'16"W
L2	320.05	N89°50'19"E

**Renner & Associates, LLC.**

616 Sixth St. \* Rapid City, SD 57701 \* 605/721-7310  
FAX: 605/721-7313 \* E-MAIL: Gary@RennerAssoc.com



CITY HALL 1903

