



YMCA

We build strong kids,
strong families and strong communities.

March 21, 2008

City Council / Public Works Committee
City of Rapid City
300 6th St.
Rapid City, SD 57701

Re: **Public Improvement in Right-of-Way**
YMCA Parking & Expansion Project
YMCA of Rapid City
Rapid City, South Dakota

City Council / Public Works Committee:

The YMCA of Rapid City is in the process of designing a new parking structure and building expansion on the northeast corner of Kansas City Street and 9th Street. The new facility will include a 4-story parking structure (370 parking spaces) and a fifth floor of wellness center, group exercise areas, locker rooms and support spaces. The new facility will be connected to the existing YMCA building with a skywalk over 9th Street. This skywalk will be a minimum of 26 feet above the street and is approximately 11 feet wide. Please refer to attached renderings for the appearance of the skywalk.

The YMCA is requesting that the Public Works Committee and the City Council authorize the skywalk as a public improvement in the right-of-way.

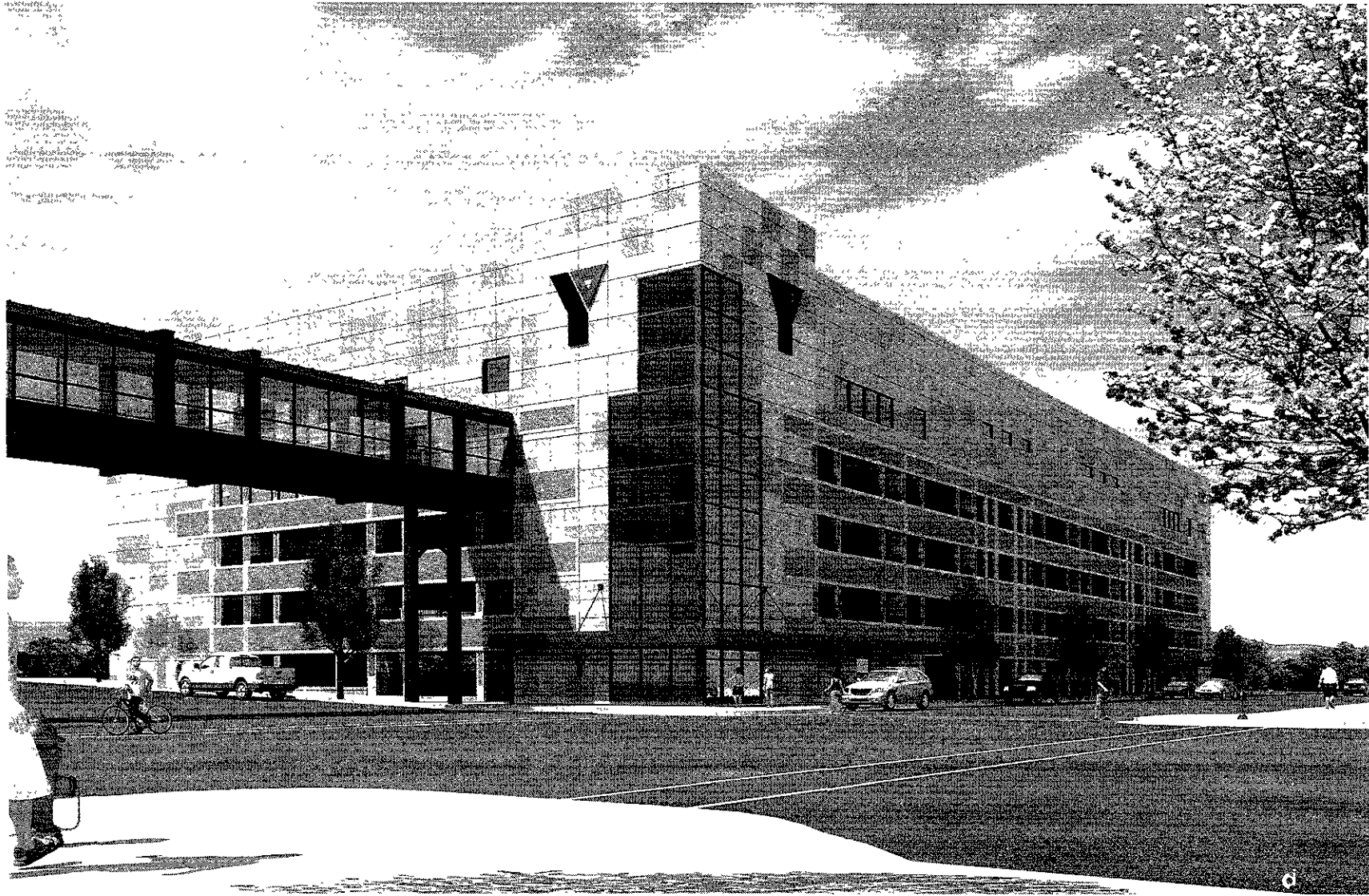
Thank you for your consideration of this item.

YMCA of Rapid City,

Roger Gallimore
Executive Director

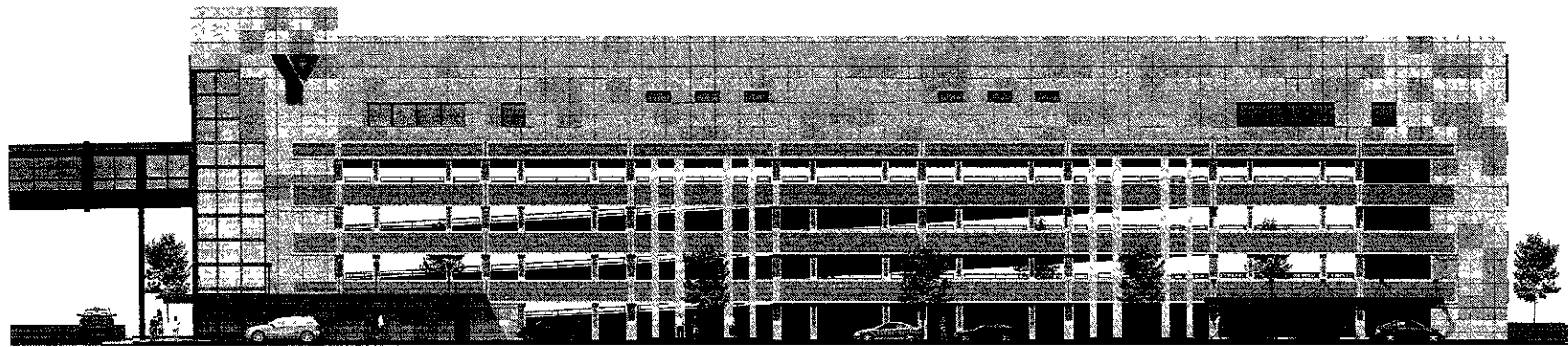
YMCA of Rapid City • 815 Kansas City Street • Rapid City, South Dakota 57701
605-718-YMCA • fax: 605-348-6578 • Website: www.rcymca.org



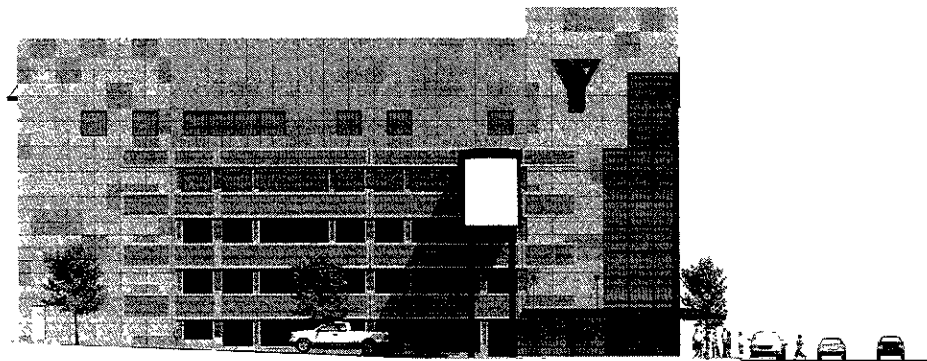


YMCA PARKING AND EXPANSION PROJECT


UPPER DECK
ARCHITECTS, INC.
1301 W. OMAHA ST. - SUITE 212
RAPID CITY, SD 57701
PH: 605 721-0237
FAX: 605 721-0240




north elevation



east elevation

YMCA PARKING AND EXPANSION PROJECT

11-12-07


UPPER DECK
ARCHITECTS, INC.
1301 W. GEMMA ST. - SUITE 212
RAPID CITY, SD 57701
PH: 605 721-0227
FAX: 605 721-0240