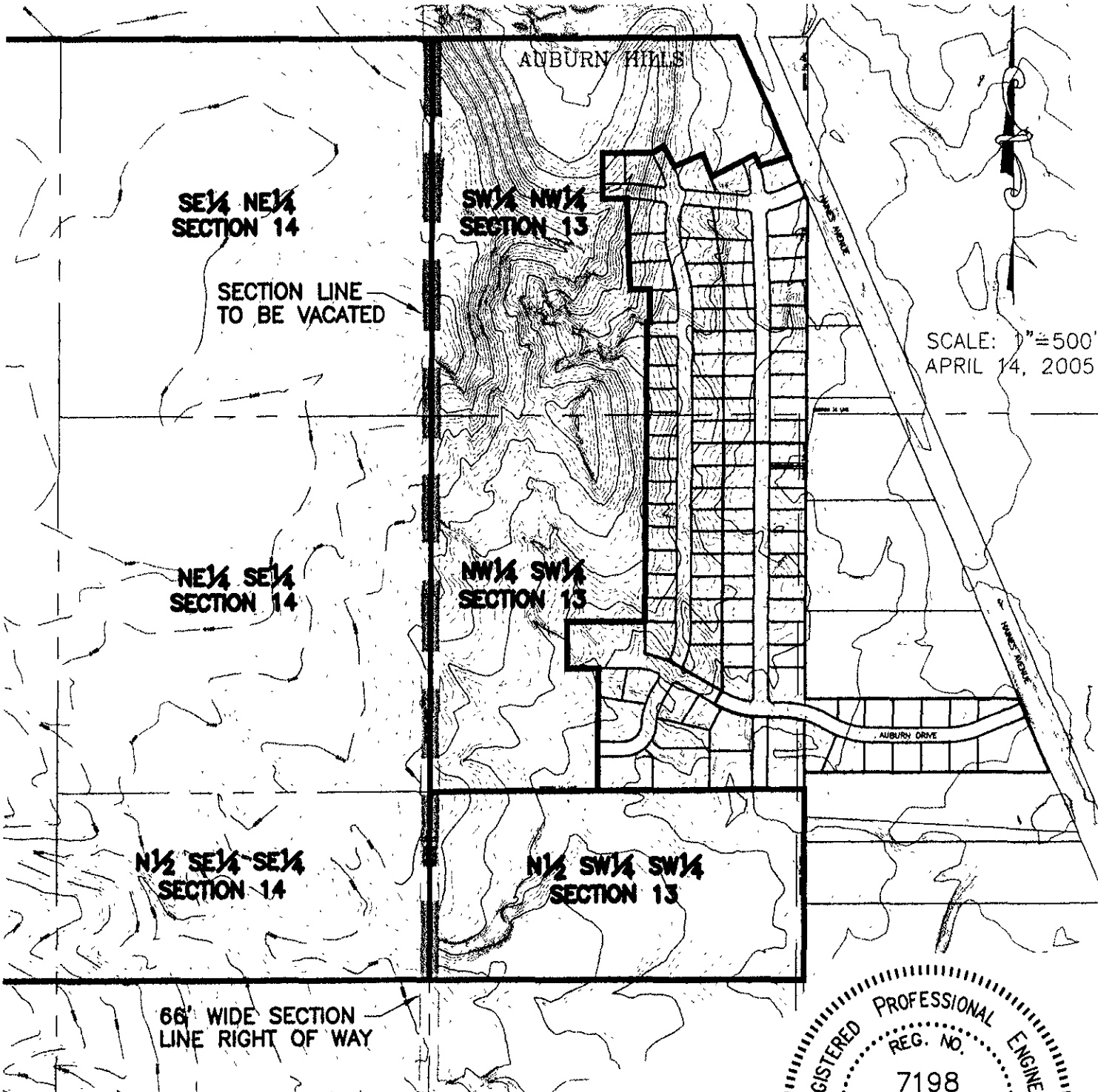


EXHIBIT "A"

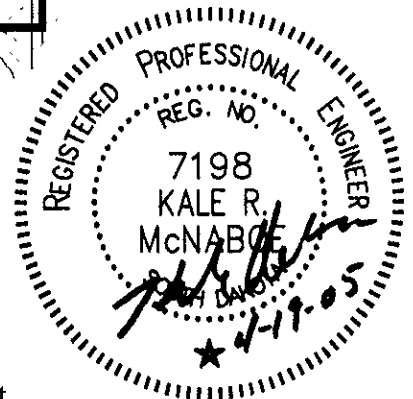
AREA OF VACATION
LOCATED IN SECTION 13 AND SECTION 14, T2N, R7E, BHM
RAPID CITY, PENNINGTON COUNTY, SOUTH DAKOTA



RECEIVED

JUN - 9 2005

Rapid City Growth
Management Department



C:\DRAWINGS\185111851.06\TOPOX.dwg, EXH-A, 4/19/2005 8:27:34 AM