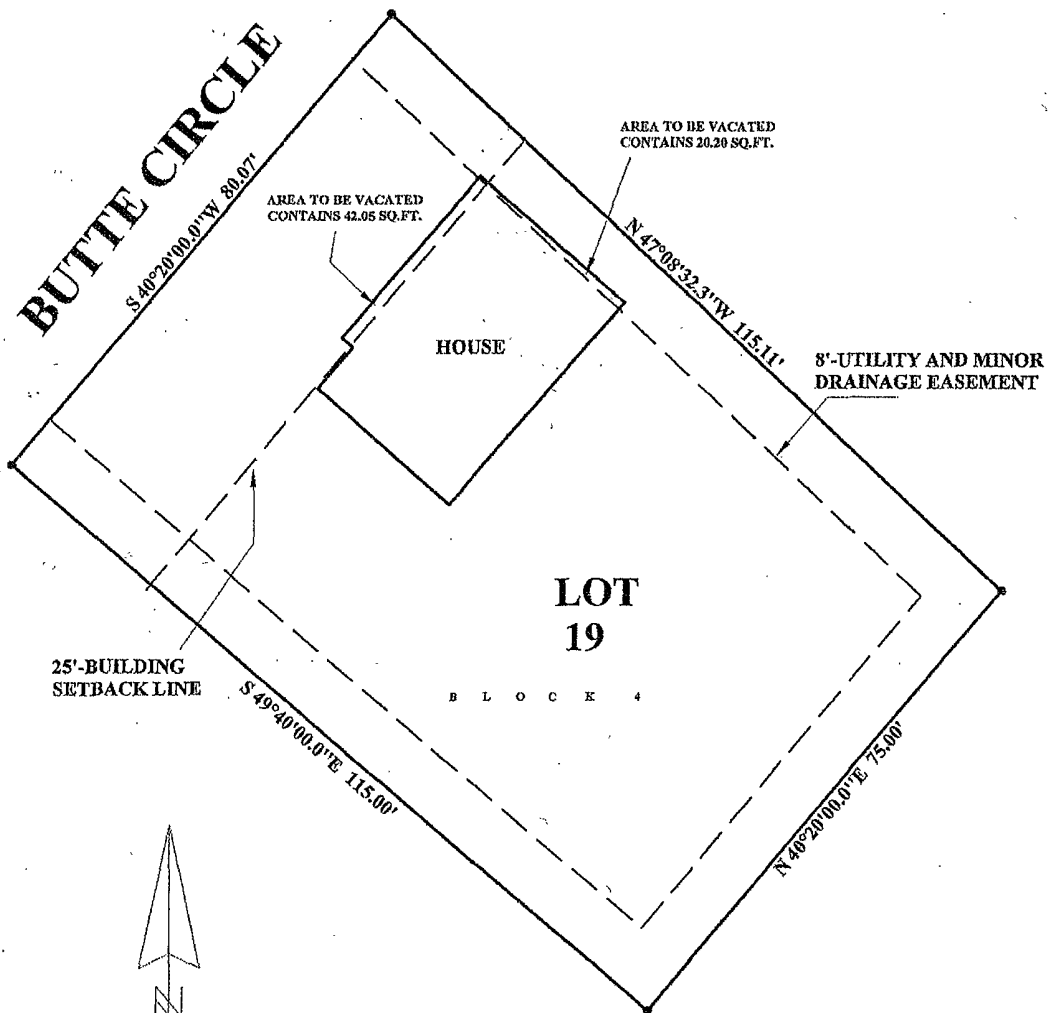


EXHIBIT "A"

VACATION OF 25' FRONT BUILDING SETBACK AND 8' UTILITY AND MINOR DRAINAGE EASEMENT

LOT 19 OF BLOCK 4 OF COUNTY HEIGHTS SUBDIVISION,
PENNINGTON COUNTY, SOUTH DAKOTA



25'-BUILDING
SETBACK LINE

AREA TO BE VACATED
CONTAINS 42.05 SQ.FT.

AREA TO BE VACATED
CONTAINS 20.20 SQ.FT.

8'-UTILITY AND MINOR
DRAINAGE EASEMENT

LOT
19

B L O C K 4

SEPTEMBER 18, 2002

SCALE 1"=20'