

01VE014

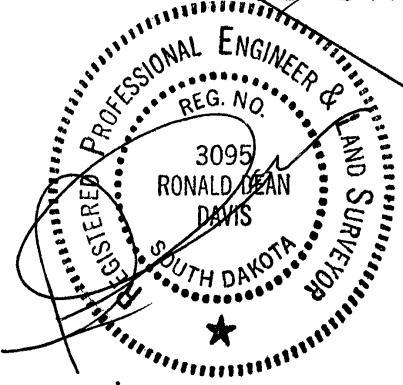
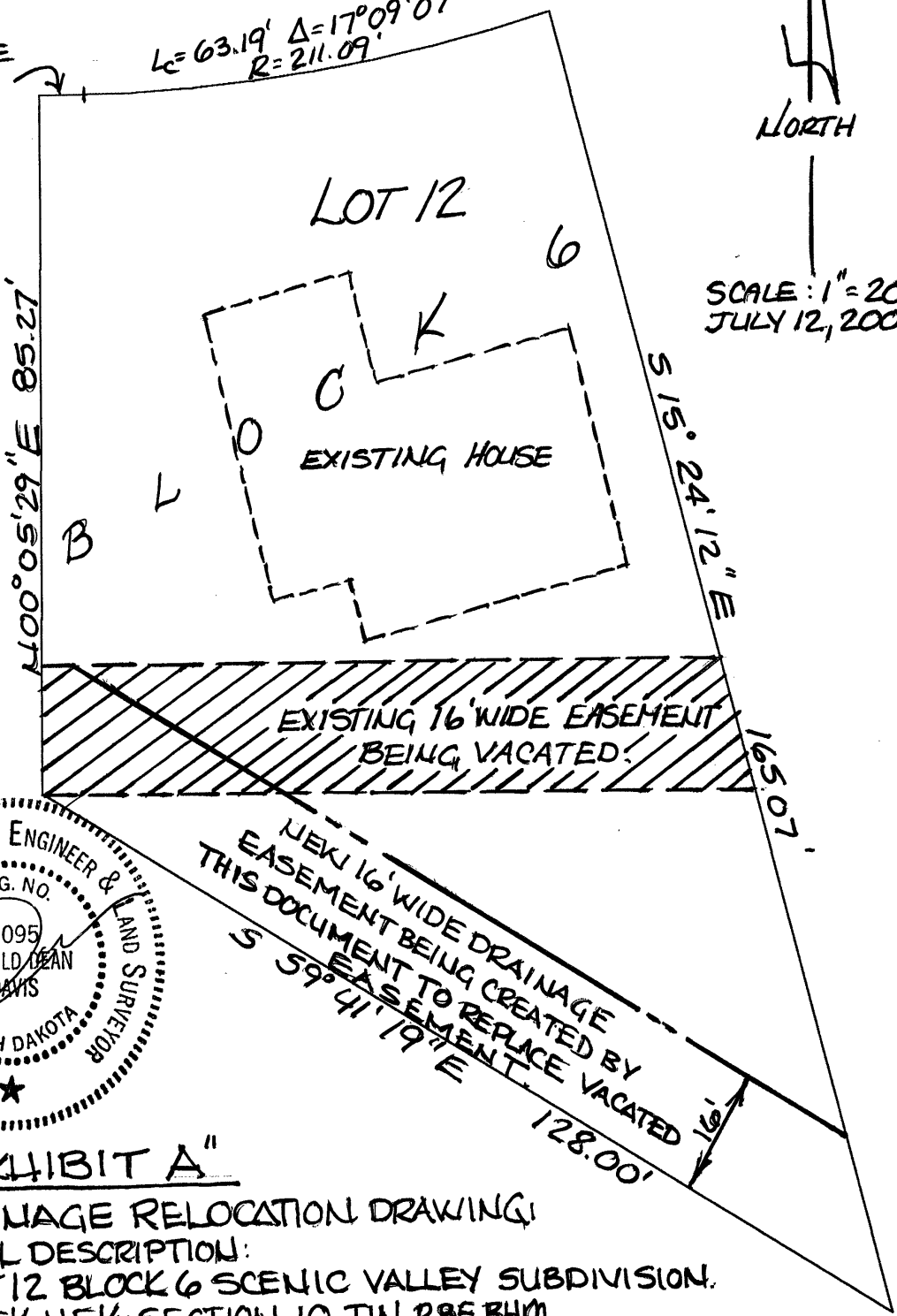
BASSWOOD STREET

S 89° 53' 47" E  
4.25'

L = 63.19' Δ = 17° 09' 07"  
R = 211.09'



SCALE: 1" = 20'  
JULY 12, 2001



**"EXHIBIT A"**

**DRAINAGE RELOCATION DRAWING**

**LEGAL DESCRIPTION:**

LOT 12 BLOCK 6 SCENIC VALLEY SUBDIVISION.  
IN SE 1/4 NE 1/4 SECTION 10, T14N, R28E, B1M.  
PENNINGTON COUNTY, SD.

PREPARED BY:  
DAVIS ENGINEERING  
1060 KINGS ROAD  
RAPID CITY, SD 57702  
605-341-3095