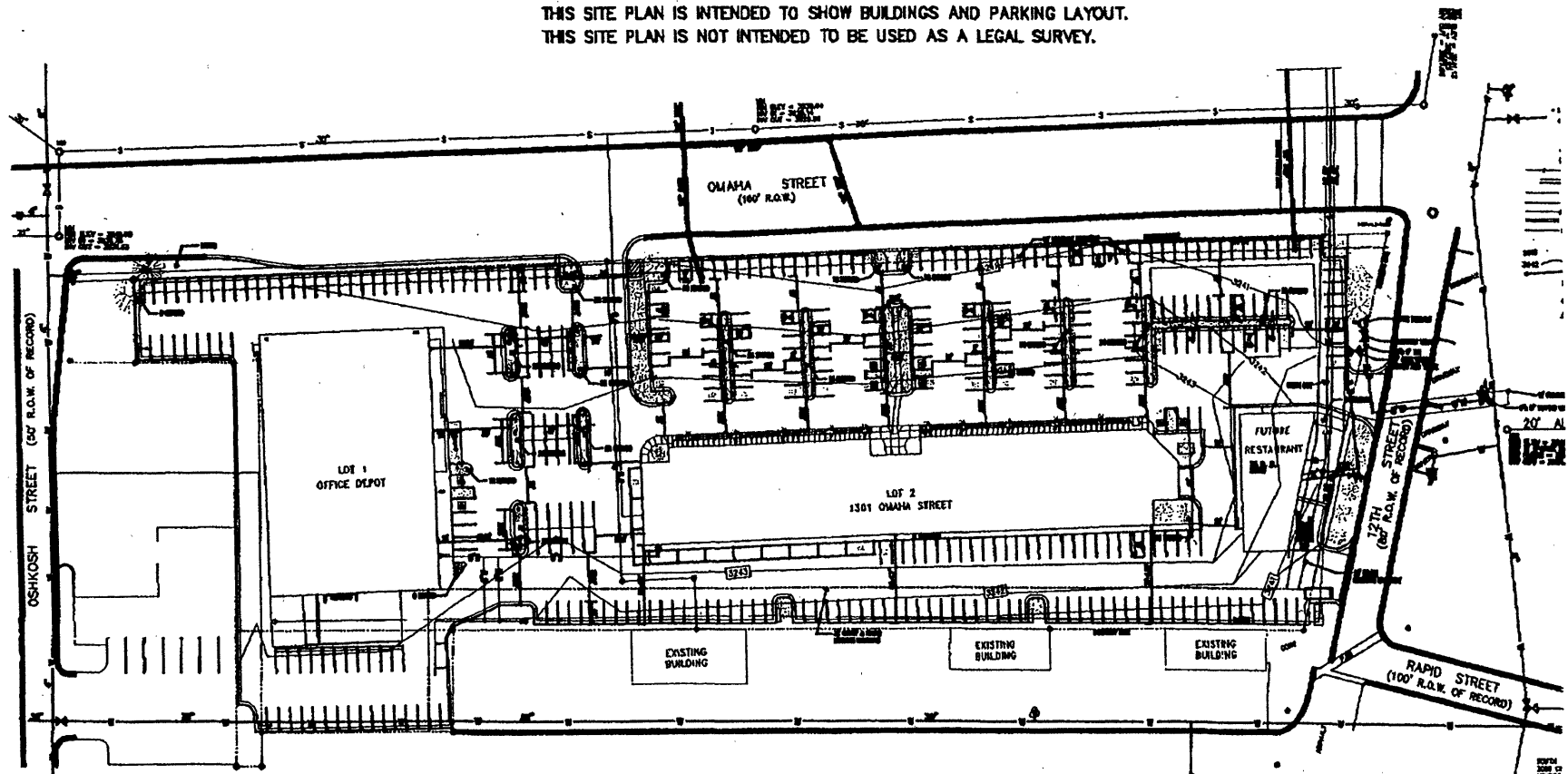


Not to Scale
OMAHA STREET PLAZA

THIS SITE PLAN IS INTENDED TO SHOW BUILDINGS AND PARKING LAYOUT.
THIS SITE PLAN IS NOT INTENDED TO BE USED AS A LEGAL SURVEY.



OFFICE DEPOT

LOT AREA - 64,370	LA. TRIM (SAL. SPACES) - 4	- 4,000
BUILDING - 28,677	IMP. TRIM - 10	- 10,000
64,043	ROADWAY - 200	- 4,000
	PAVING - 250.0 SF	- 1,000.0
	TOTAL: BUILDING POINTS	
	POINTS REQUIRED: 64,043	

OMAHA PLAZA

LOT AREA - 26,840 SF.	LA. TRIM (SAL. SPACES) - 4	- 4,000
REAR SPACE - 26,840 SF. / 4,000 x 6 = FIELD	IMP. TRIM - 10	- 10,000
OFFICE SPACE - 26,840 SF. / 4,000 x 6 = FIELD	ROADWAY - 200	- 4,000
PARKING REQUIREMENT - 4,700 SF. / 4,000 x 11 = 11	PAVING - 250.0 SF	- 1,000.0
	TOTAL: BUILDING POINTS	
	POINTS REQUIRED: 26,840	

PLANNED PARKING: 275
COMPARISON PARKING: 100

Scale
North
Date: P.