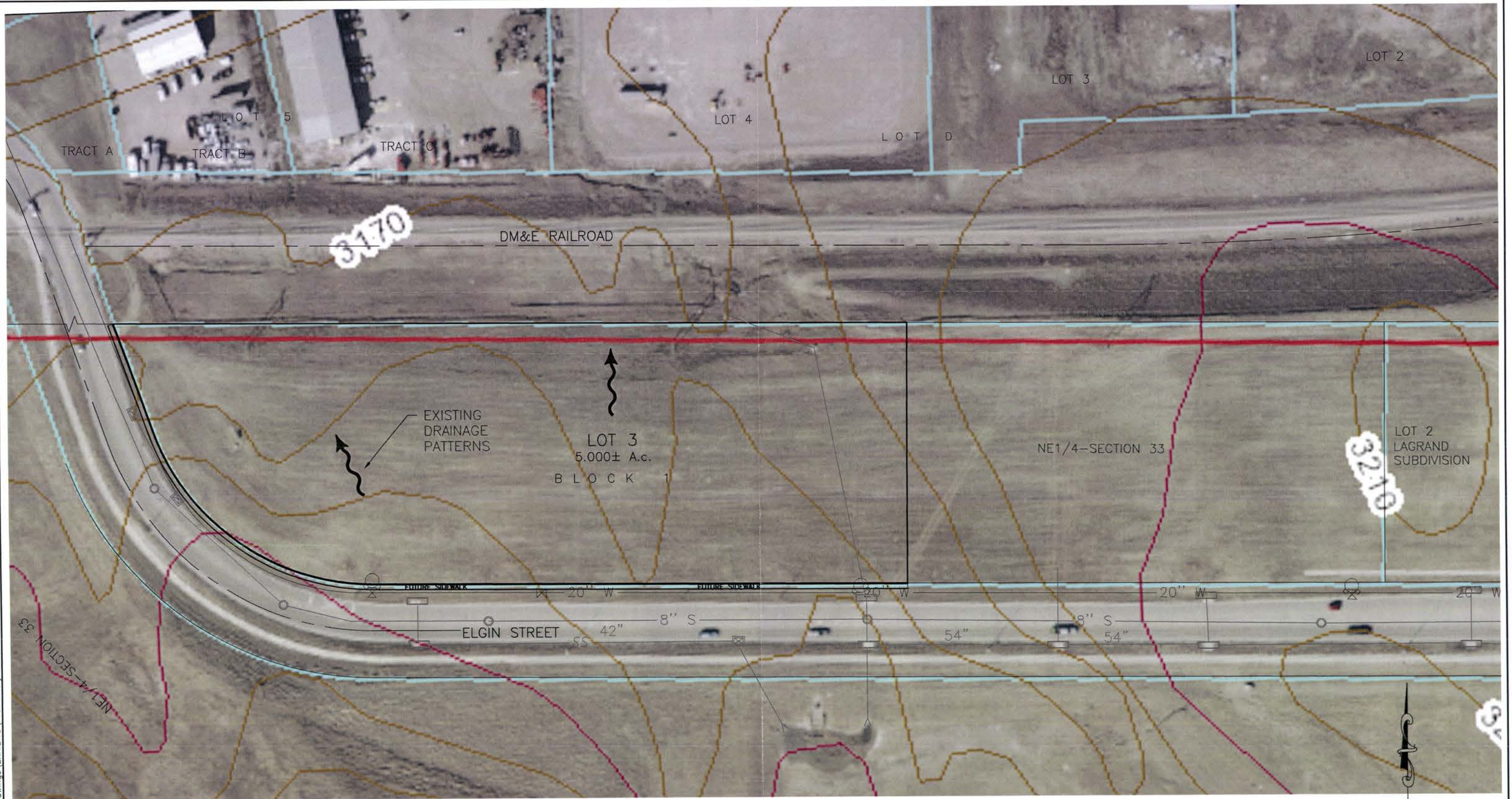


X:\700-749\708\_Ponkratzen\Drawings\EXHIBITS\Preliminary Subdivision Plan-Lot 3.dwg 2/6/2015 3:47pm

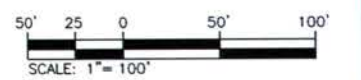


RECEIVED

FEB 06 2015

Rapid City Community Planning  
& Development Services

PROPOSED LOT 3 OF BLOCK 1,  
LAGRAND SUBDIVISION  
LOCATED IN SECTION 33, T2N, R8E, BHM  
RAPID CITY, PENNINGTON COUNTY, SOUTH DAKOTA  
FEBRUARY 6, 2015



**PRELIMINARY  
FOR REVIEW ONLY**



**DREAM DESIGN  
INTERNATIONAL, INC.**

CIVIL ENGINEERING, LANDSCAPE ARCHITECTURE,  
LAND PLANNING, CONSTRUCTION ADMINISTRATION  
528 KANSAS CITY STREET, SUITE 4, RAPID CITY, SD 57701  
PHONE: (605) 348-0538 FAX: (605) 348-0545 WWW.DREAMDESIGNINC.COM

14 PLO14