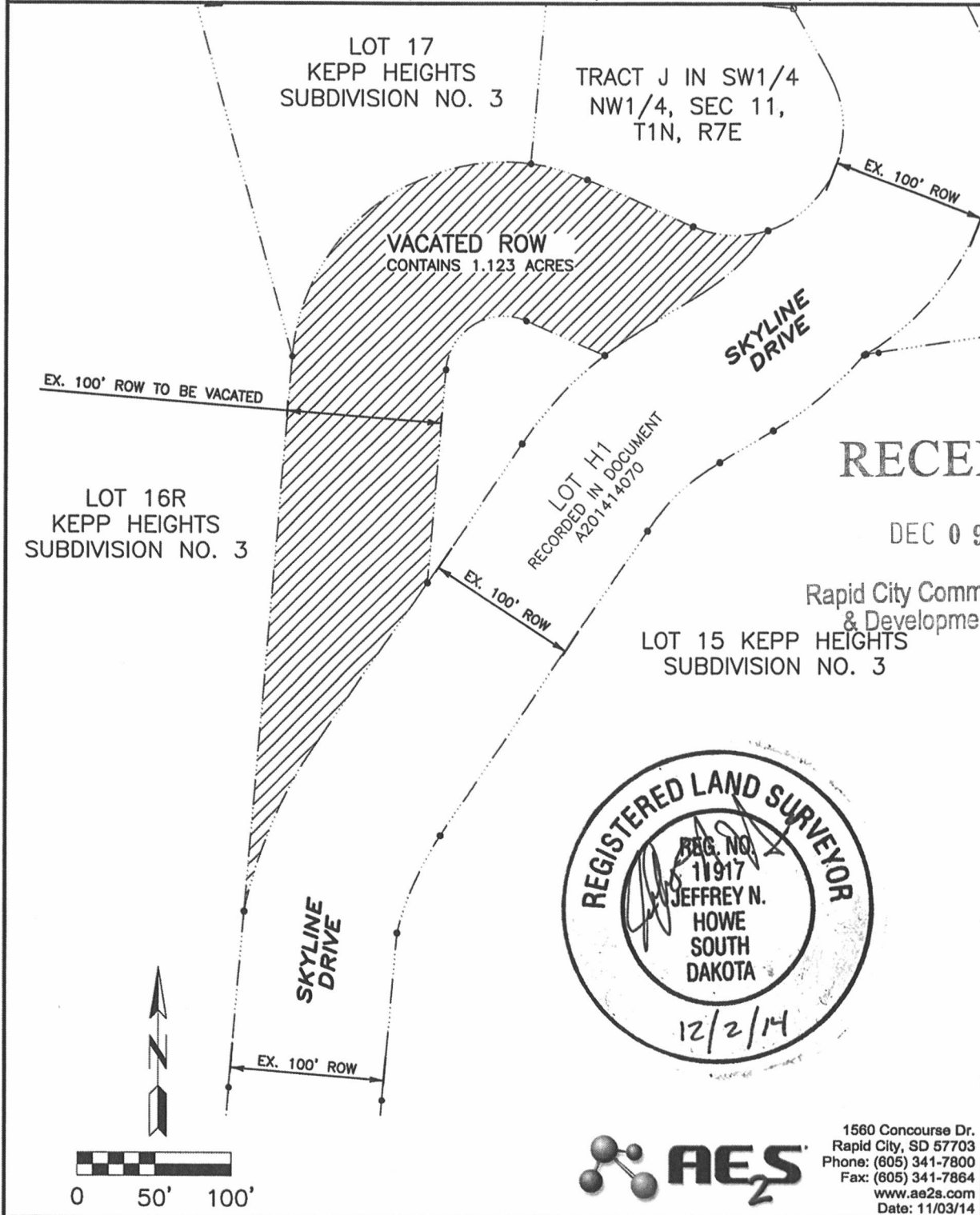


**EXHIBIT "A"**  
**RIGHT-OF-WAY VACATION**  
 ADJACENT TO TRACT J OF THE SW1/4 NW1/4 AND LOTS 15, 16R  
 AND 17 OF KEPP HEIGHTS SUBDIVISION NO.3  
 ALL LOCATED IN SECTION 11, T1N, R7E, B.H.M. RAPID CITY, PENNINGTON COUNTY, SOUTH DAKOTA



**RECEIVED**

DEC 09 2014

Rapid City Community Planning  
& Development Services

LOT 15 KEPP HEIGHTS  
SUBDIVISION NO. 3



1560 Concourse Dr.  
 Rapid City, SD 57703  
 Phone: (605) 341-7800  
 Fax: (605) 341-7864  
 www.ae2s.com  
 Date: 11/03/14

