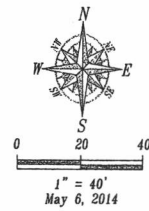


14UR013

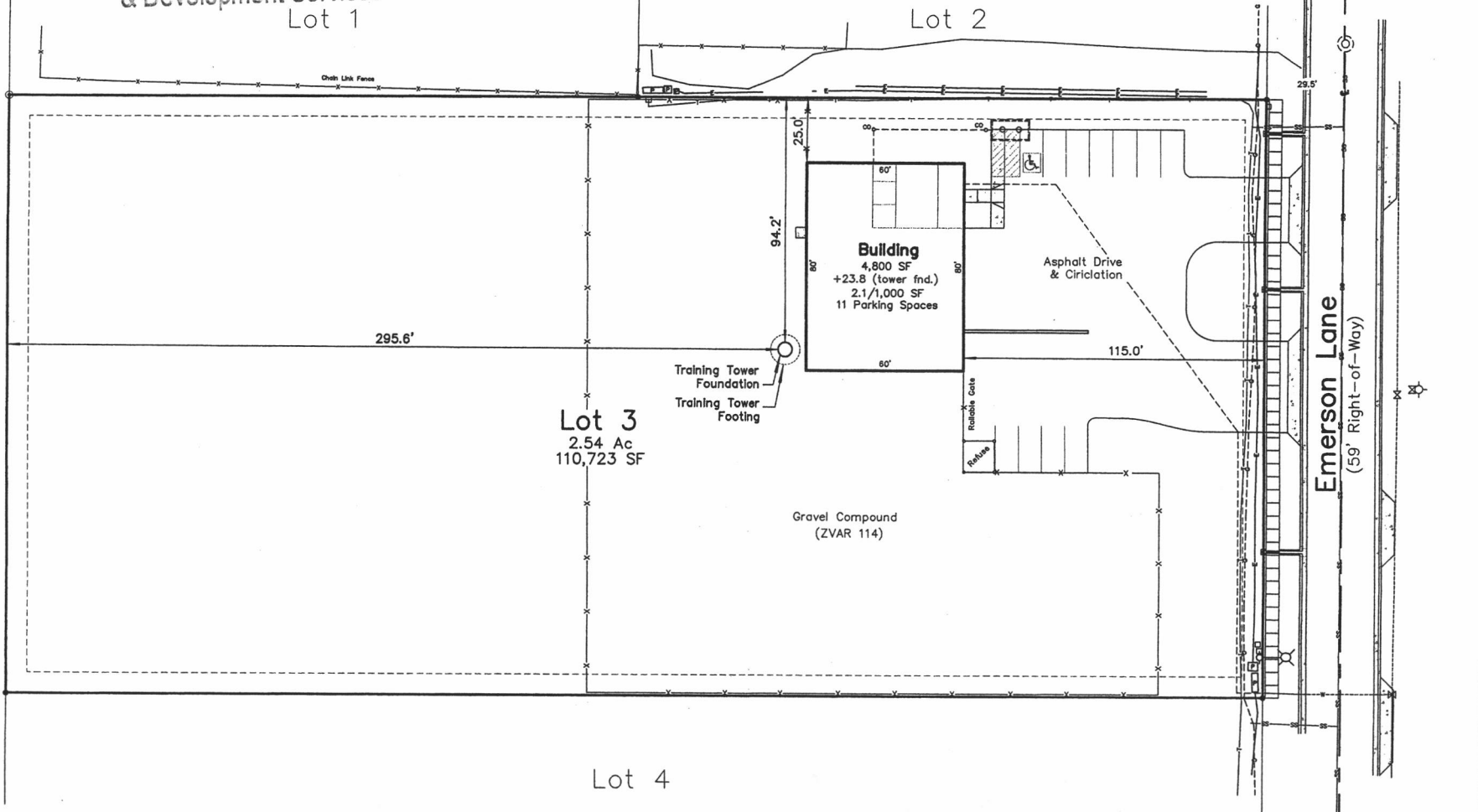
RECEIVED

MAY 09 2014

Rapid City Community Planning
& Development Services
Lot 1



Fisk Land Surveying
& Consulting, Inc.
Engineers, Inc.
1022 Main Street, P.O. Box 8154
Rapid City, South Dakota 57709
(605) 348-1538



Training Tower Addition
Sioux Falls Tower & Communications
Lot 3, Block 2, Northstar Subdivision
Section 29, T2N, R8E, B.H.M.
Rapid City, Pennington County, South Dakota

Surveyed by:
ML, CD

Date
2/19/13

Drawn by:
RWF

Checked by:
WF

Revisions

Site Plan
1
of
1

Project No.
13-02-07