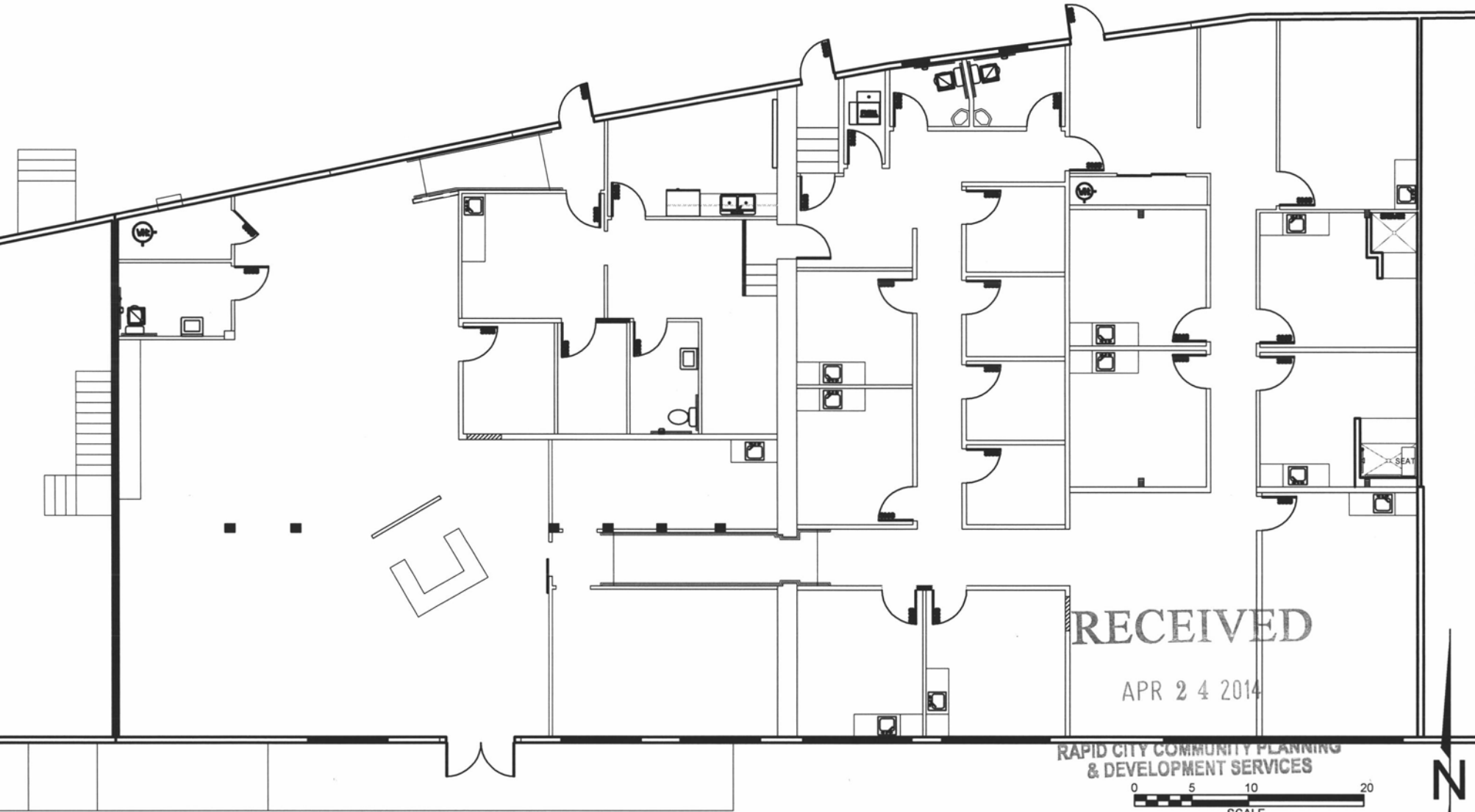


14UR012

EXHIBIT 'D'

318 MT. RUSHMORE ROAD, SUITE E FLOOR PLAN

PARCEL 1 (PORTION OF LOTS 17-24), PARCEL 2 OF LOTS 17-24 AND SOUTH 1/2 OF VACATED ALLEY NORTH AND ADJACENT LESS THE SOUTH 67 FEET AND THE SOUTH 50 FEET OF LOTS 25-27 AND THE 17 FEET OF THE RAIL ROAD RIGHT OF WAY, BLOCK 63 OF ORIGINAL TOWN OF RAPID CITY, IN SECTION 36, T2N, R7E, BHM, RAPID CITY, PENNINGTON COUNTY, SOUTH DAKOTA



RECEIVED

APR 24 2014

RAPID CITY COMMUNITY PLANNING & DEVELOPMENT SERVICES

0 5 10 20
SCALE

N