



BRITTON ENGINEERING &
LAND SURVEYING, INC
8035 BLACK HAWK ROAD, SUITE 5,
PO BOX 649 BLACK HAWK, SD 57718
PH: (605) 716-7988

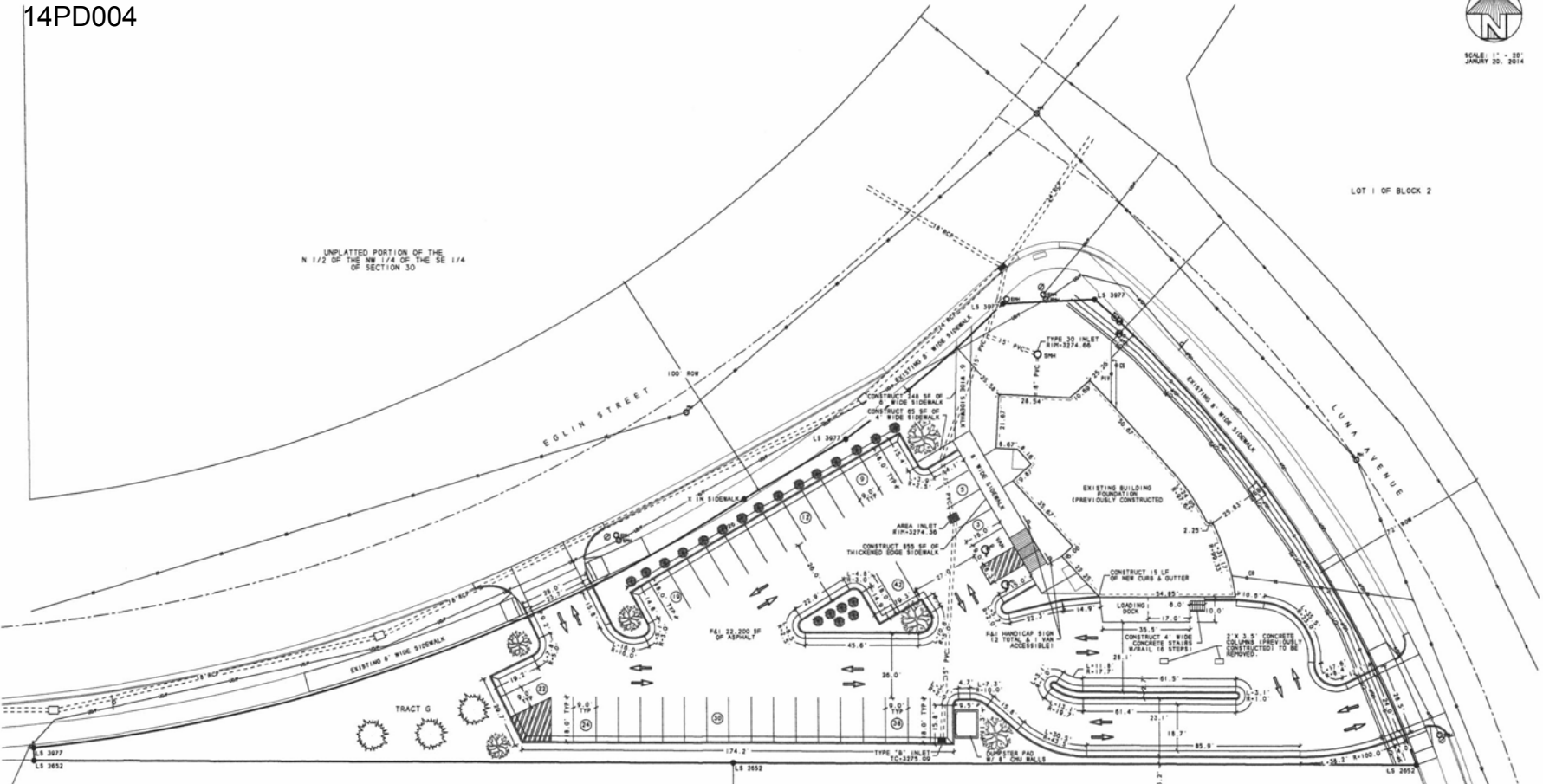
BE
LS

TRACT G OF RUSHMORE CROSSING
LOCATED IN SECTION 30, T2N,
R6E, BHM, RAPID CITY,
PENNINGTON COUNTY, SOUTH DAKOTA

SITE PLAN
FISHER FURNITURE
851 EGLIN STREET

UNPLATTED PORTION OF THE
N 1/2 OF THE NW 1/4 OF THE SE 1/4
OF SECTION 30

LOT 1 OF BLOCK 2



NOTE:
ALL DIMENSIONS ARE BASED ON AS-BUILT
CONDITIONS.
ALL CURB & GUTTER IS EXISTING FROM
PREVIOUS CONSTRUCTION.
WATER AND SEWER SERVICES AS BUILT
LOCATIONS.
STORM SEWER SHOWN AS-BUILT LOCATIONS.
SIGN WILL BE ATTACHED TO THE BUILDING
PER OWNER.
NO ADDITIONAL SITE LIGHTING INDICATED.

TRACT A

LOT 1-2 OF TRACT B

LANDSCAPE LEGEND:

- GRASS LIGHTS PER SY:
 - BLUE GRASS
 - LIMBER GRASS
 - BUFFALO GRASS
 - SWAMP GRASS
 - BIG BLUE STEM
 - LITTLE BLUE STEM
 - MIDLAND BLUE
 - MEADOW BROOM
 - GREEN NEEDLE
- SHRUBS (250 PFS EACH)
 - DEUTZIOA SPECIES
 - BARBERY (GOLDEN, ROSE GLOW)
 - CURRENT (PINK)
 - PETTITOLA (COGNITION TRIUMPH)
 - SOLIS (MAGN. WOLFINGER)
 - SPREIA (GOLDENBOND)
 - EVERGREEN SPECIES
 - ABRIVITAE (GLOBE (METZ MIDDE))
 - LAVISSE (PINK-ADAP, COMPACT PFITZER)
 - SEA GREEN, SAVINA
- SMALL TREE (500 PFS EACH)
 - CORNUSPECIES (ANGUS)
 - MOUNTAIN ASH (SHINY)
 - ASPEN (SHAWING)
 - BIRCH
 - CHASAPPE (SPRING SNOW)
 - ALYSE (RUSSIAN)
 - LILAC, JAPANESE TREE

- MEDIUM TREE (1000 PFS EACH)
 - HAMELODUS (WESTAL, "SKYLINE", "RHADENASTER")
 - LINDEN, LITTLE LEAF, "GREENSPINE"
- LARGE DECIDUOUS TREE (2000 PFS EACH)
 - FRAXINUS (PATRIOT, "KINDRED", "PRAIRIE SPINE")
 - HACKBERRY
 - HENTYCKY COPPER TREE
 - LINDEN, AMERICAN "BENTLEY"
 - HAWK (AUTUMN BLAZE)
 - OHIO BUCKETS
- EVERGREEN TREE (2000 PFS EACH)
 - FINE CHINESE
 - AUSTRIAN
 - LINDEN
 - PYRAMID
 - SPRUCE (CHISEL)
 - BLACK HILLS
 - COLLADO

PARKING REQUIREMENTS:

PAVING LEVEL:	
PUMP-TURN (8000 12 80/1000)	4,283 SF = 12 SPACES
WAREHOUSE BUILDING AREA (0.25/1000)	601 SF = 1 SPACES
OFFICE (15,000/1000)	4,864 SF = 25 SPACES
RAISEMENT STAIRS (1.25/1000)	4,864 SF = 25 SPACES
TOTAL STALLS REQUIRED	42 SPACES (INCLUDES 2 HANDICAP STALLS)
TOTAL STALLS PROVIDED	42 SPACES (INCLUDES 2 HANDICAP STALLS)

LANDSCAPING REQUIREMENTS: LOT 5

RETAINED AREA	48,193 SF
BUILDING AREA	4,864 SF
1 EVERGREEN TREES (2,000 PFS EACH)	6,000
3 LARGE TREES (2,000 PFS EACH)	6,000
3 MEDIUM TREES (1,000 PFS EACH)	3,000
2 SHRUBS (250 PFS EACH)	5,000
2,372 SF GRASS (1.0 PFS PER SY)	23,720
TOTAL POINTS NEEDED	43,220
TOTAL POINTS PROVIDED	43,280



Project No. 14-0004
Drawn By: SRT
Check By: CAS
Designed By: SRT
Checked By: SRT
Date: 2/12/14

2
5