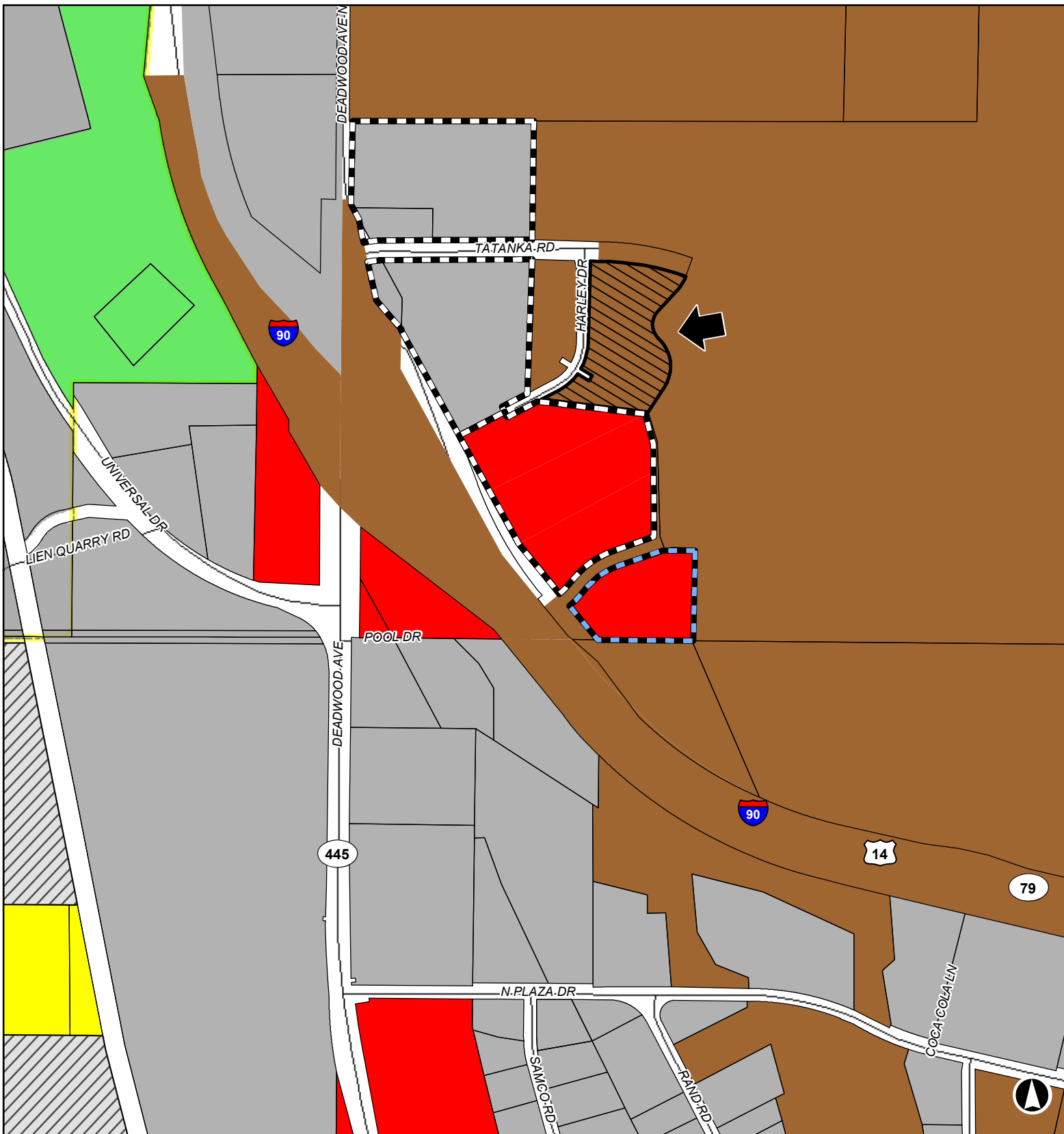


13RZ008

Southeast corner of Tatanka Road and Harley Drive



Rapid City / Pennington County Zoning

- | | | | | | | |
|---------------------------------|---------------------|---------------------------|------------------|----------------------|----------------------|-----------------|
| Subject Property | General Agriculture | Heavy Industrial | Light Industrial | Cement Plant | Rapid City Limits | Limited Ag., PC |
| Planned Development | General Commercial | Low Density Residential-1 | No Code | Heavy Industrial, PC | Light Industrial, PC | |
| Planned Development Designation | | | | | | |