

HISTORIC FAIRMONT CREAMERY
RAPID CITY, SD

SHEET TITLE: BASEMENT FLOOR PLAN

COMP. NO. 06017.5
CADD FILE
DATE 4/12/13
DRAWN BY: FN

NO.	REVISIONS	DATE	BY

201 MAIN ST. SUITE 201
RAPID CITY, SD 57101
(605) 716-0320
FAX: 716-0320
201 MAIN ST. SUITE 201
RAPID CITY, SD 57101
(605) 673-6336

Fennell Design, Inc.
Architecture & Project Management

A 2.0

RECEIVED

APR 15 2013

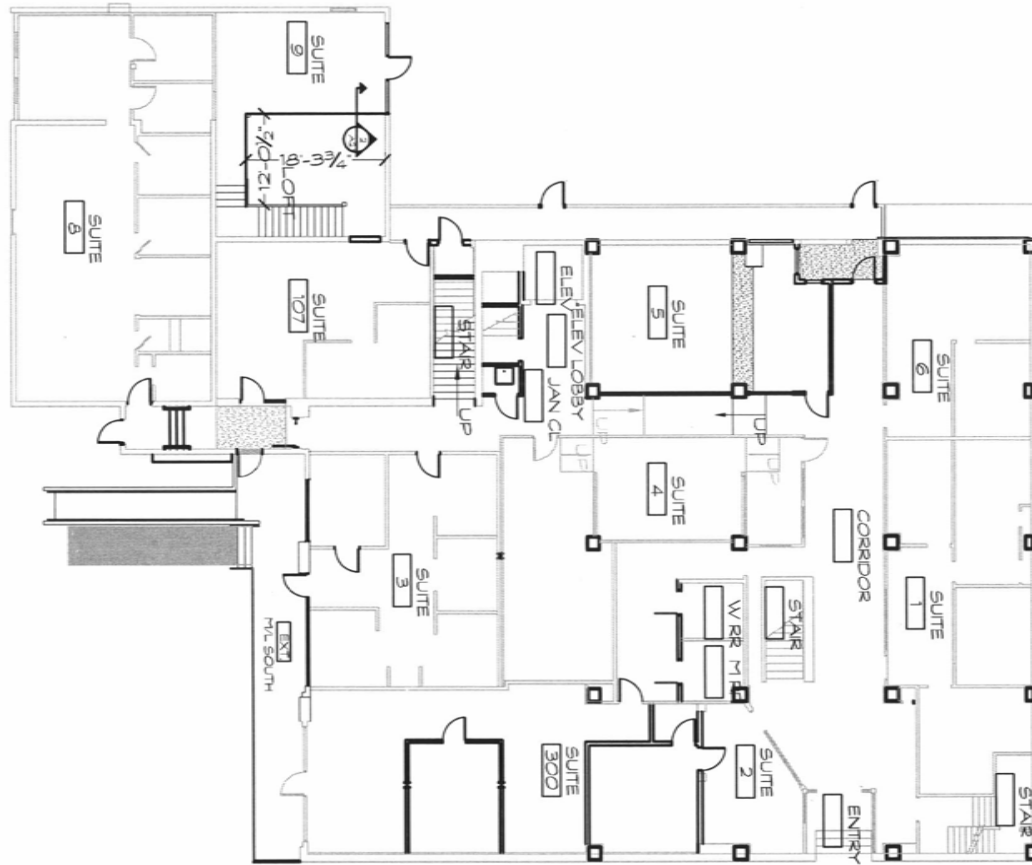
Rapid City Community Planning
& Development Services

1
A2.0

BASEMENT FLOOR PLAN

SCALE: 1/16"=1'-0"





RECEIVED

APR 15 2013

Rapid City Community Planning & Development Services

1 MAIN FLOOR PLAN
A2.1 SCALE: 1/16"=1'-0"



HISTORIC FAIRMONT CREAMERY
RAPID CITY, SOUTH DAKOTA
SHEET TITLE: A1.0_Parking Plan_5.27.09

COMP NO: 060175
CAD FILE: DD
DATE: 4/24/08
DRAWN BY: FNL

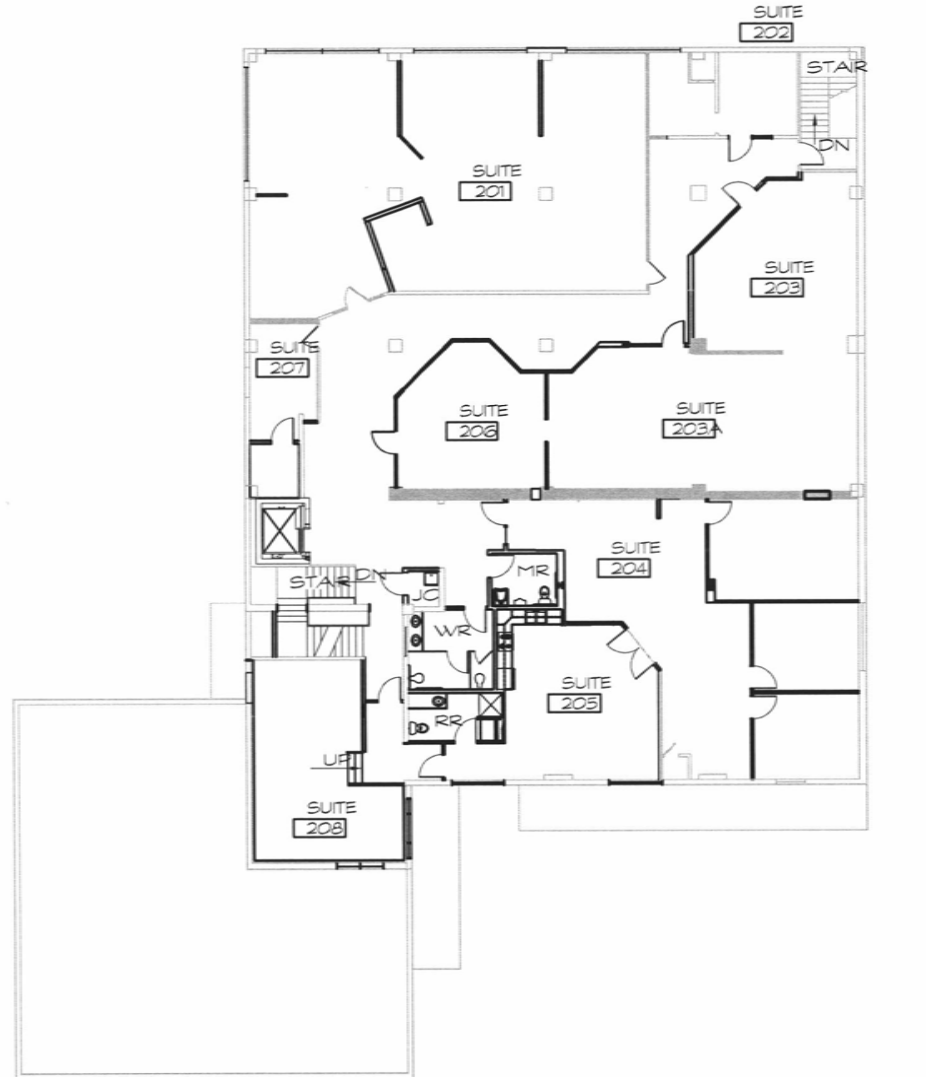
NO	REVISIONS	DATE	BY

832 ST. JOSEPH ST.
RAPID CITY, SD 57102
Rapid City, SD
FAX: 605-342-0251

287 N. 6TH ST.
RAPID CITY, SD 57104
FAX: 605-342-0251

Fennell Design, Inc.
Architecture & Project Management

A2.1



1
A 2.2

SECOND FLOOR PLAN

SCALE: 1/6"=1'-0"



RECEIVED

APR 15 2013

Rapid City Community Planning
& Development Services

HISTORIC FAIRMONT CREAMERY
RAPID CITY, SD
SHEET TITLE SECOND FLOOR PLAN

COMP. NO. 060175
CADD FILE
DATE 4/12/13
DRAWN BY FNL

NO.	REVISIONS	DATE	BY

201 MAIN ST. SUITE 201
RAPID CITY, SD 57101
(605) 780-0320
FAX: 780-0321
227 PARKWAY S. #1250
RAPID CITY, SD 57102
(605) 673-8336

Fennell Design, Inc.
Architecture & Project Management

A 2.2