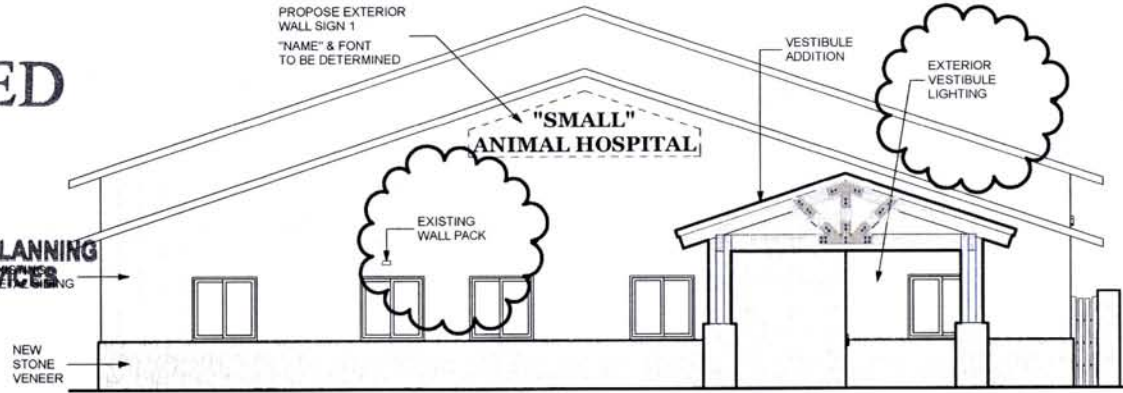


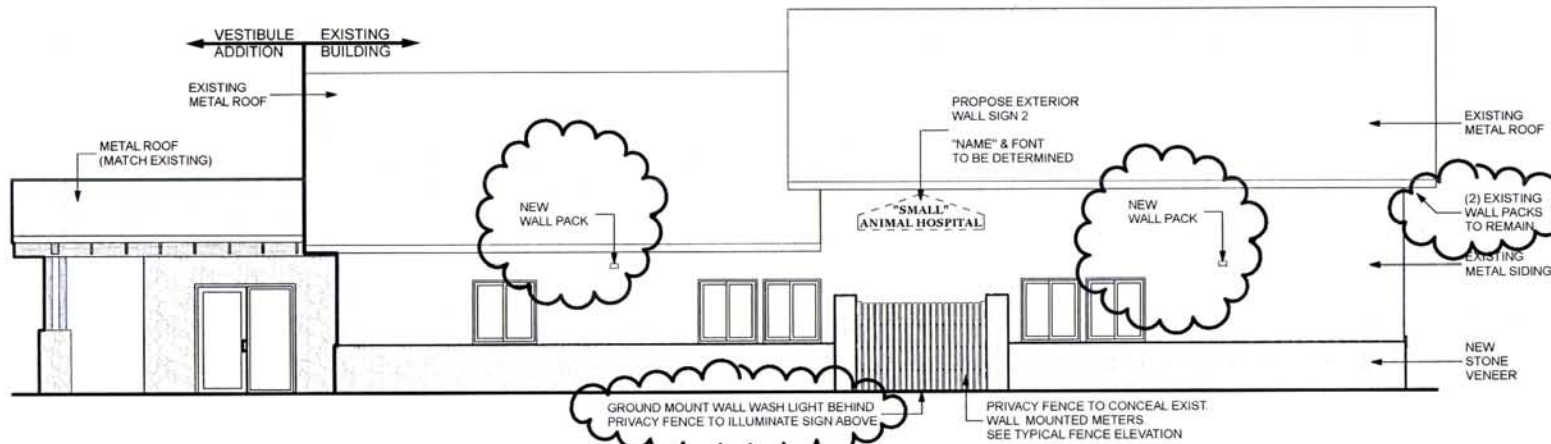
RECEIVED

FEB 25 2013

RAPID CITY COMMUNITY PLANNING
& DEVELOPMENT SERVICES



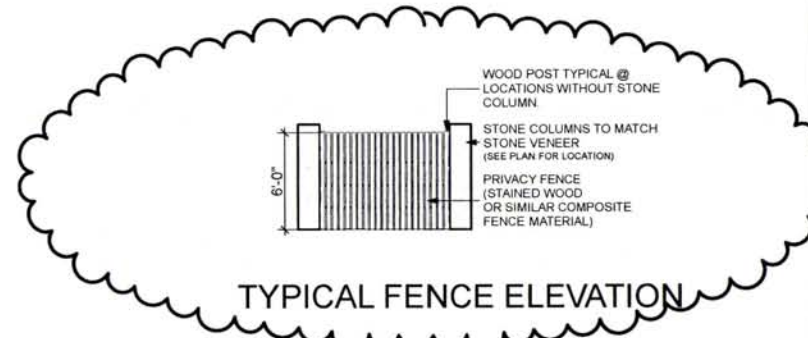
FRONT ELEVATION



SIDE ELEVATION



SIGN SCHEMATIC



TYPICAL FENCE ELEVATION



ARCHITECTURE
DESIGN/BUILD
RESTORATION
PLANNING &
DEVELOPMENT
LEE S. GEIGER
ARCHITECT
613 MAIN ST #201 RAPID CITY SD 57701 605.348.6062

PLANNED DEVELOPMENT SUBMITTAL

"SMALL" ANIMAL HOSPITAL
(OFFICIAL NAME TO BE DETERMINED)

1555 CATRON BLD.
RAPID CITY, SD 57701

DRAWN BY: TGW
DATE UPDATED: 2/25/13
DATE PLOTTED: 2/25/13

DATE PRINTED:
REVISIONS PRINTED:
REVISION 1-
REVISION 2-
REVISION 3-

BUILDING &
SIGN
ELEVATIONS

A2-R

13PD006

From: Tyler [<mailto:tyler@geigerarchitecture.com>]
Sent: Wednesday, March 27, 2013 3:17 PM
To: Lacock Fletcher
Cc: Geiger@rushmore.com
Subject: Sign Sizes - Animal Hospital

Fletcher,

Please find the following sign size information that you requested:

Wall Sign 1 (west) - proposed square footage = 60sq.ft.
Wall Sign 2 (south) - proposed square footage = 20sq.ft.

These square footages are pulled from the approximate dashed lines illustrated around the signs on the drawings.

If there is anything else that you need from us, please let me know.

Regards,

Tyler Walker

Geiger Architecture
613 Main Street
Suite 201
Rapid City, SD 57701

Phone:(605)348-6062
Email: tyler@geigerarchitecture.com
Fax: (775)269-3404