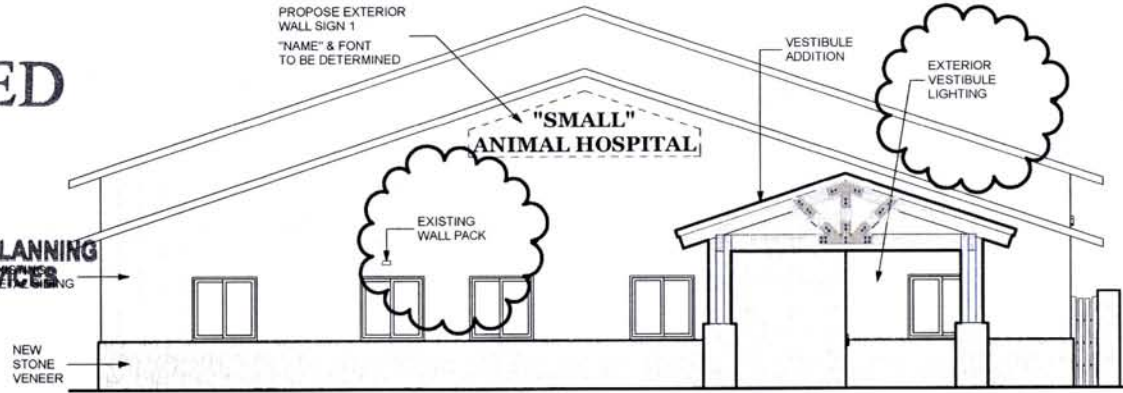


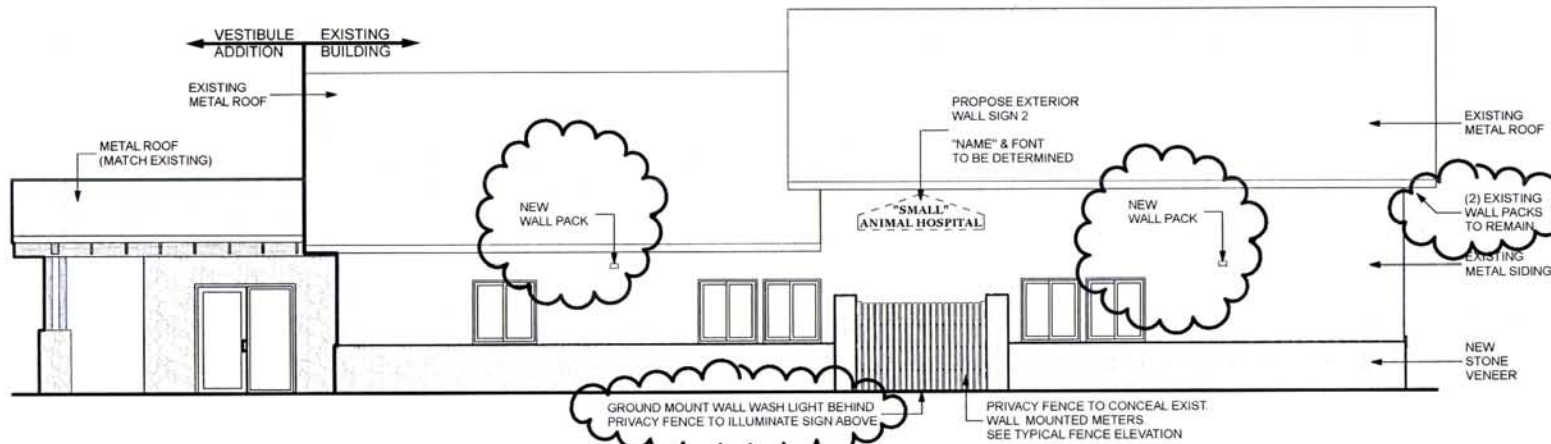
RECEIVED

FEB 25 2013

RAPID CITY COMMUNITY PLANNING & DEVELOPMENT SERVICES



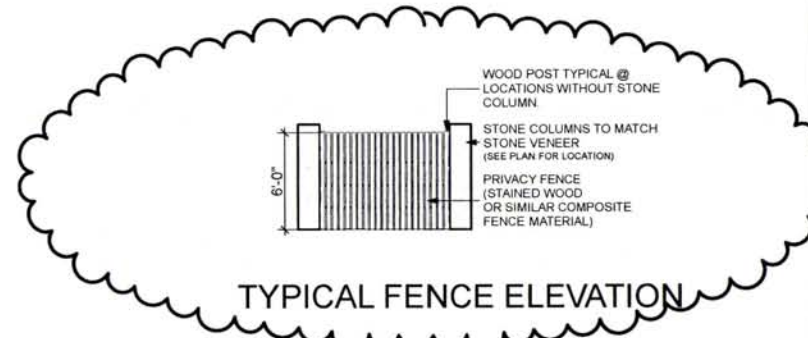
FRONT ELEVATION



SIDE ELEVATION



SIGN SCHEMATIC



TYPICAL FENCE ELEVATION



ARCHITECTURE
 DESIGN/BUILD
 RESTORATION
 PLANNING &
 DEVELOPMENT
 LEES GEIGER
 ARCHITECT
 613 MAIN ST #201 RAPID CITY SD 57701 605.348.6062

PLANNED DEVELOPMENT SUBMITTAL

"SMALL" ANIMAL HOSPITAL
(OFFICIAL NAME TO BE DETERMINED)

1555 CATRON BLD.
RAPID CITY, SD 57701

DRAWN BY: TGW
 DATE UPDATED: 2/25/13
 DATE PLOTTED: 2/25/13

DATE PRINTED:
 REVISIONS PRINTED:
 REVISION 1-
 REVISION 2-
 REVISION 3-

BUILDING & SIGN ELEVATIONS

A2-R