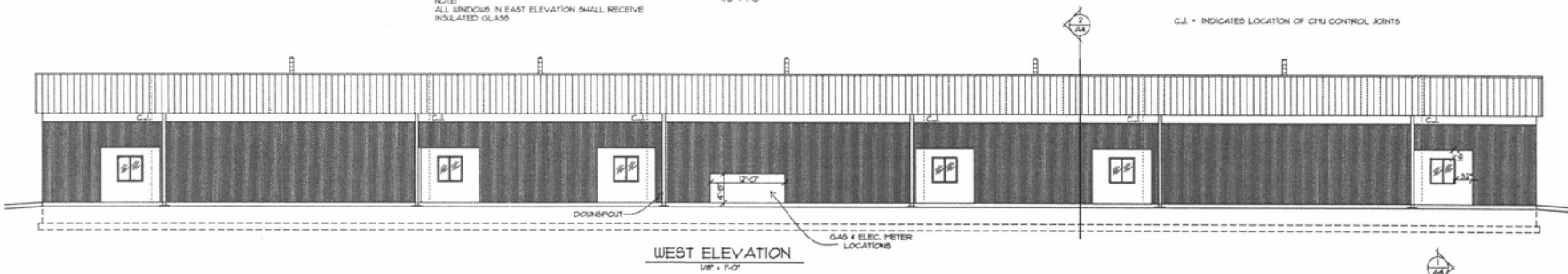
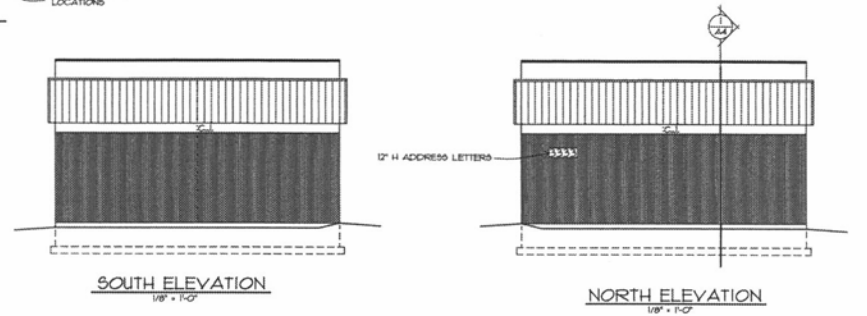


NOTE:
ALL WINDOWS IN EAST ELEVATION SHALL RECEIVE
INSULATED GLASS

C.E. = INDICATES LOCATION OF CPU CONTROL JOINTS



NOTE:
ALL WINDOWS IN WEST ELEVATION SHALL RECEIVE
INSULATED TEMPERED GLASS



TERRY R. STOCKER, LTD
13731 DUBER RD. RAPID CITY, SD 57702-7332 (605) 341-4823

COMMERCIAL BUILDING
FOR:
BILL SINGER ARCHITECTS
SOUTH PLAZA DRIVE
RAPID CITY, SOUTH DAKOTA

PROJECT NO: 1205
DRAWN BY: T.S.
CHECKED BY: T.S.
DATE: 02-01-13
REVISIONS:

A3