

RECEIVED

JAN 18 2013

Rapid City Community Planning & Development Services

NOTE:
TOPOGRAPHIC INFORMATION IS FROM RAPIDMAP

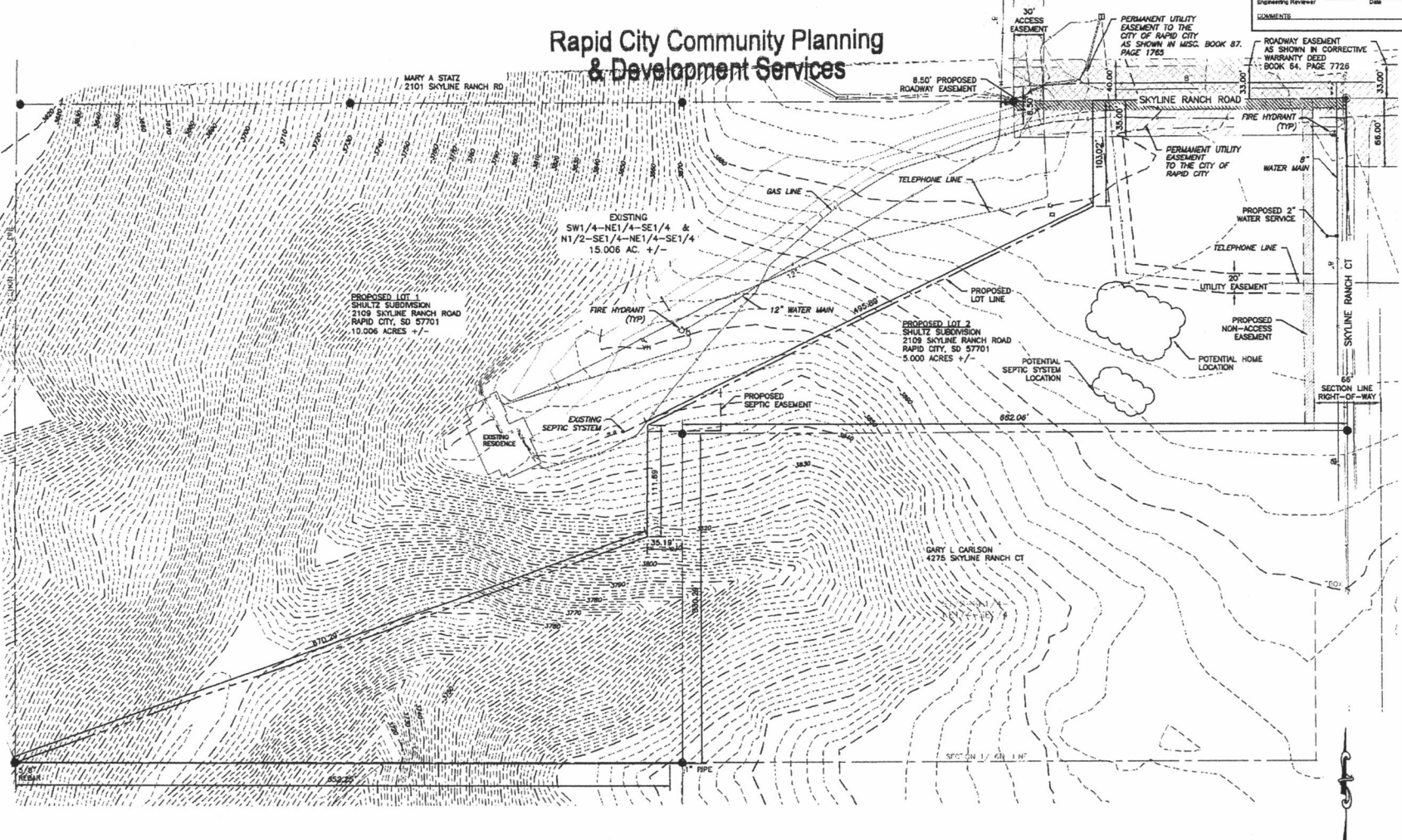
CITY OF RAPID CITY

Plans are reviewed for general conformance with applicable governmental regulations, stipulations, design criteria and engineering standards. The City of Rapid City does not certify the accuracy, reliability or completeness of the plans or design. What ever the responsibility of the engineer of record. All necessary permits should be obtained prior to construction or in proposed public improvements.

Engineering Reviews: _____ Date: _____

Comments: _____

Number: _____



**PRELIMINARY
FOR REVIEW ONLY**

DREAM DESIGN INTERNATIONAL, INC.
ENGINEERING, LANDSCAPE ARCHITECTURE,
LAND PLANNING, CONSTRUCTION ADMINISTRATION
528 KANSAS CITY STREET, SUITE 4, RAPID CITY, SD 57701
PHONE: (605) 348-0538 FAX: (605) 348-0545 WWW.DREAMDESIGNINC.COM

SHULTZ SUBDIVISION
RAPID CITY, PENNINGTON COUNTY, SOUTH DAKOTA

0 25 50
SCALE: 1" = 50'

Sheet Name: _____

MASTER PLAN

3 of 4