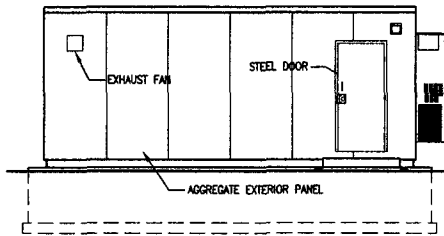
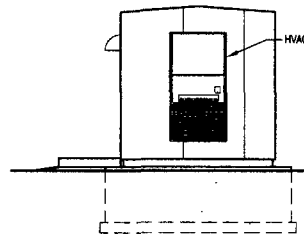


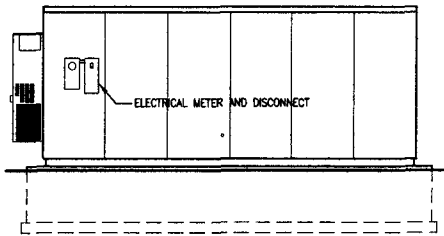
6 WEST ELEVATION  
SCALE: 1/8" = 1'-0"



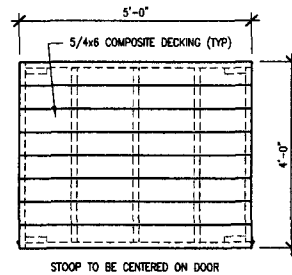
5 SOUTH ELEVATION  
SCALE: 1/8" = 1'-0"



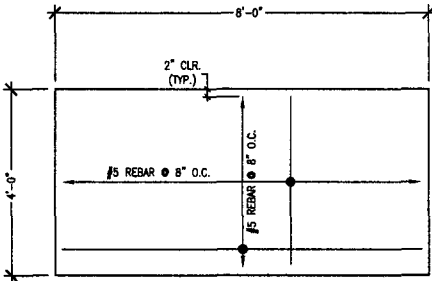
4 EAST ELEVATION  
SCALE: 1/8" = 1'-0"



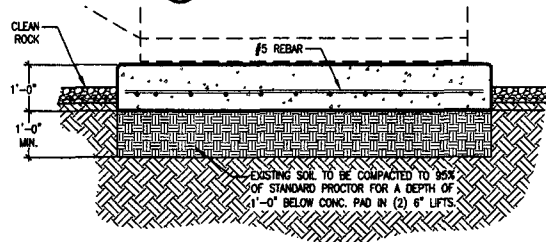
7 SOUTH ELEVATION  
SCALE: 1/8" = 1'-0"



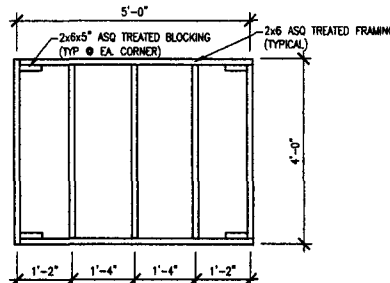
11 WOOD STOOP DECKING  
SCALE: 1/8" = 1'-0"



8 GENERATOR PAD  
SCALE: 3/8" = 1'-0"

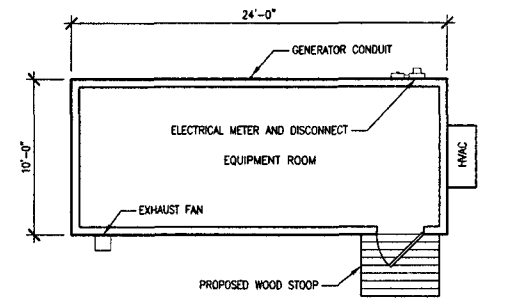


9 GENERATOR PAD SECTION  
SCALE: 3/8" = 1'-0"

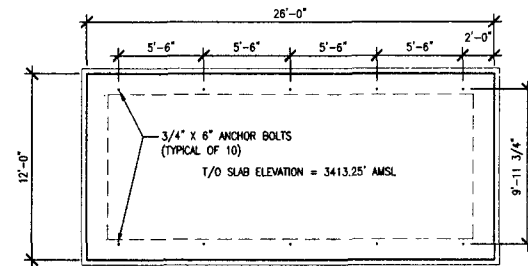


10 WOOD STOOP FRAMING  
SCALE: 1/8" = 1'-0"

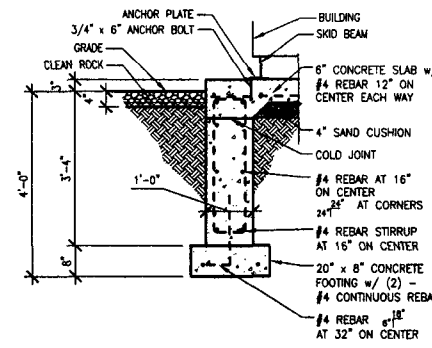
- (2) 2x6x8 NO.1 ACQ TREATED LUMBER W/ DOUBLE GALV. OR S.S. FASTENERS
- (1) 2x6x10 NO.1 ACQ TREATED LUMBER W/ DOUBLE GALV. OR S.S. FASTENERS
- (8) 5/4x6x6 SOLID COMPOSITE DECKING MATERIAL REQUIRED 0" SPACING
- 3"-#2 SQUARE DRIVE DOUBLE GALVANIZED OR S.S. DECK SCREWS TO BE USED



3 SHELTER PLAN  
SCALE: 1/8" = 1'-0"



2 FOUNDATION PLAN  
SCALE: 1/8" = 1'-0"



1 FOUNDATION SECTION  
SCALE: 3/8" = 1'-0"

I hereby certify that the portion of this technical submission described below was prepared by me or under my direct supervision and responsible charge. I am a duly registered Architect under the laws of the State of SOUTH DAKOTA. ROBERT J. DAVIS, Reg. No. 7188

Signed \_\_\_\_\_  
Date \_\_\_\_\_

**DESIGN 1**  
ROBERT J. DAVIS, AIA  
ARCHITECT  
9873 VALLEY VIEW RD.  
EDEN PRAIRIE, MN 55344  
(952) 903-9289 FAX 903-9292

**PERFORMANCE DEVELOPMENT GROUP, LTD.**  
17226 447TH AVENUE  
PO BOX 906  
WATERTOWN, SD 57201  
(605) 886-2605

PROJECT  
**RAPID CITY EAST**  
XXXX EAST VALE ROAD  
RAPID CITY, SD 57703

SHEET CONTENTS:  
SHELTER PLAN  
SHELTER FOUNDATION PLAN  
SHELTER ELEVATIONS  
GENERATOR PAD PLAN  
STOOP DETAILS

DRAWN BY: BMS  
DATE: 10-11-11  
CHECKED BY: TRB  
REV. A: 10-12-11  
REV. 0: 10-01-12

RECEIVED

DEC 20 2012

Rapid City Community Planning & Development Services