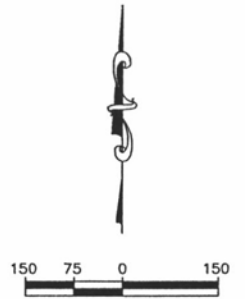


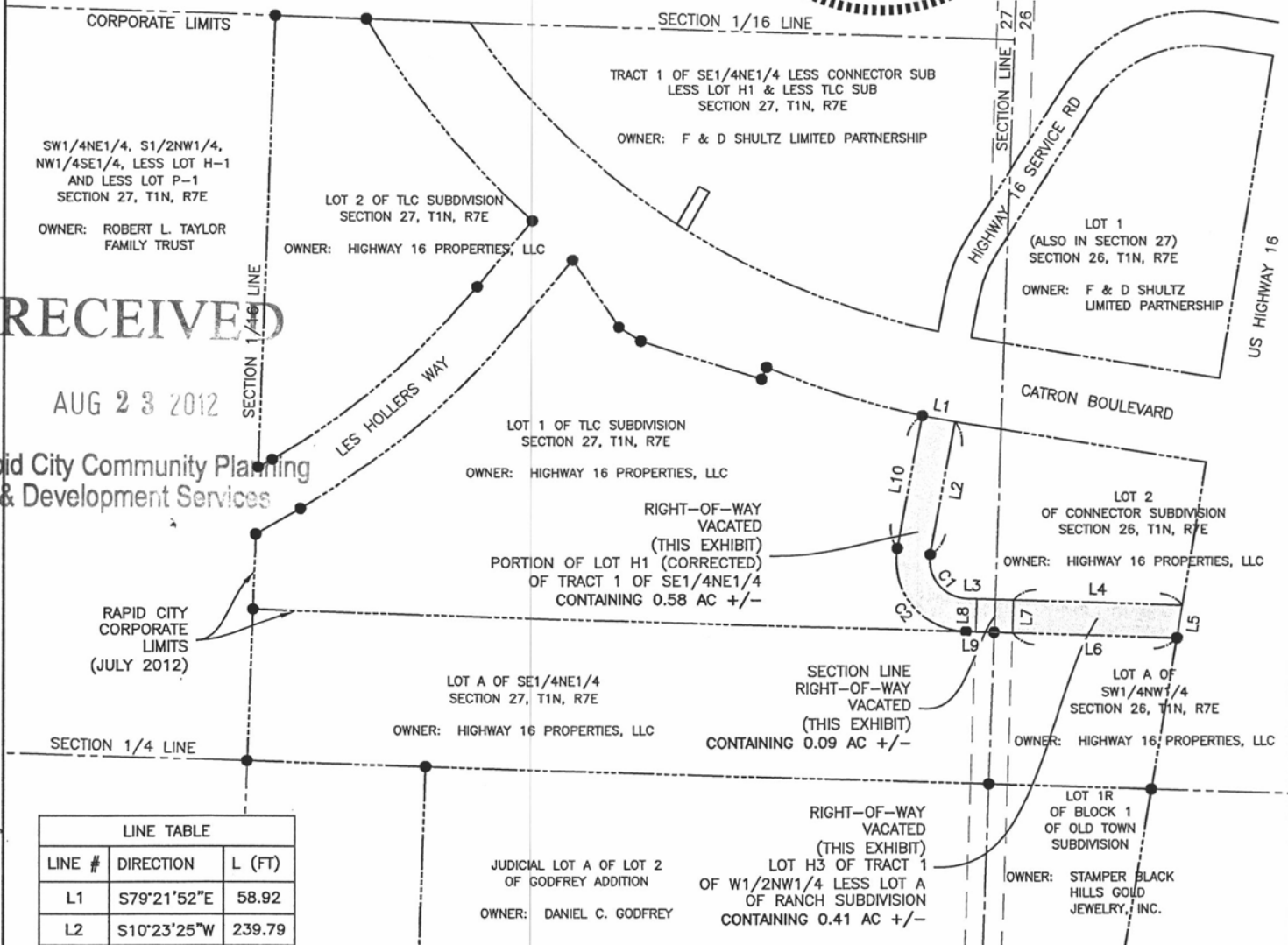
A PORTION OF THE HIGHWAY 16 SERVICE ROAD
RIGHT-OF-WAY AND A PORTION OF SECTION LINE
RIGHT-OF-WAY TO BE VACATED

IN THE SE1/4NE1/4 OF SECTION 27, T1N, R7E AND IN
THE SW1/4NW1/4 OF SECTION 26, T1N, R7E, BHM
RAPID CITY, PENNINGTON COUNTY, SOUTH DAKOTA



LEGEND

- FOUND SURVEY MONUMENT
- ROW TO BE VACATED THIS DOCUMENT
- - - PROPERTY LINE



RECEIVED

AUG 23 2012

Rapid City Community Planning
& Development Services

RAPID CITY
CORPORATE
LIMITS
(JULY 2012)

LINE TABLE		
LINE #	DIRECTION	L (FT)
L1	S79°21'52"E	58.92
L2	S10°23'25"W	239.79
L3	S88°07'31"E	17.10
L4	S88°08'49"E	300.06
L5	S09°18'33"W	60.51
L6	N88°08'49"W	292.26
L7	N01°54'27"E	60.00
L8	S01°54'27"W	60.12
L9	N88°12'14"W	17.12
L10	N10°36'24"E	239.76

CURVE TABLE					
CURVE #	DELTA ANGLE	R (FT)	L (FT)	CHORD BEARING	LC (FT)
C1	98°43'19"	68.37	117.81	S38°58'24"E	103.77
C2	98°39'45"	128.41	221.13	N38°47'10"W	194.80

NOTES:

1. SURVEY COMPLETED IN SOUTH DAKOTA STATE PLANE, NAD83, SOUTH ZONE.
2. BEARINGS REFERENCED TO SOUTH DAKOTA STATE PLANE, SOUTH ZONE, NAD83.
3. PROJECT SCALE FACTOR: 0.9997475
4. PORTION OF LOT H1 ORIGINALLY DEDICATED JULY 13, 2001, AS RECORDED IN BOOK OF HIGHWAY PLATS 10 ON PAGE 30.
5. LOT H3 ORIGINALLY DEDICATED APRIL 9, 1999 AS RECORDED IN BOOK OF HIGHWAY PLATS 9 ON PAGE 135.
6. LOTS H1 AND H3 ORIGINALLY DEFINED UP TO SECTION LINE RIGHT-OF-WAY.

P:\12-124\AutoCAD\Easements\ROW VACATION EXHIBIT.dwg

FEC
Ferber
Engineering
Company, Inc.
Civil Engineering • Water Resources • Transportation • Land Surveying • GIS
729 East Waterman St., Rapid City, SD 57701 • Phone: (605) 343-2311

EXHIBIT A

PROJECT NO.
J12-124
FIGURE NO.
1 OF 1