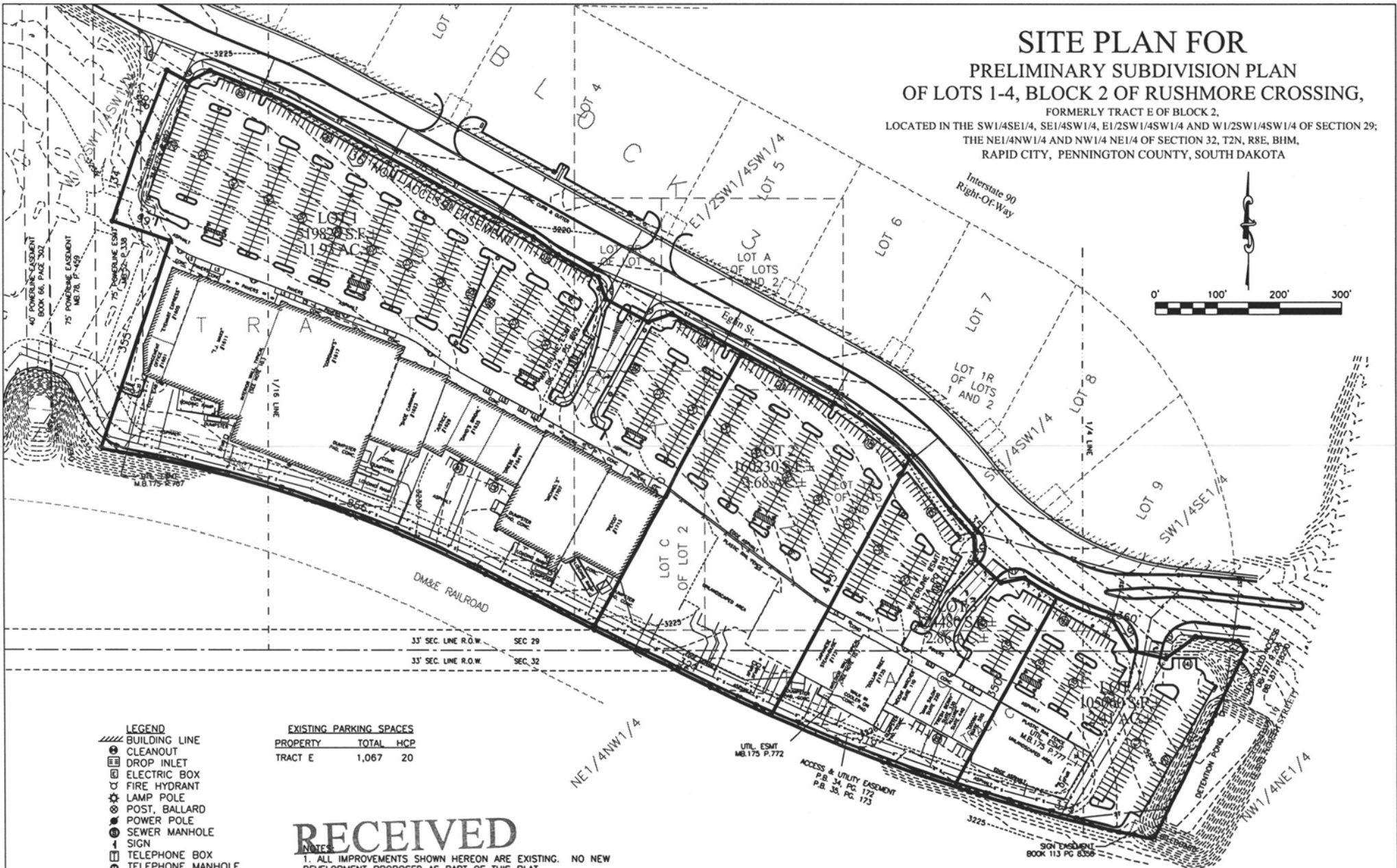
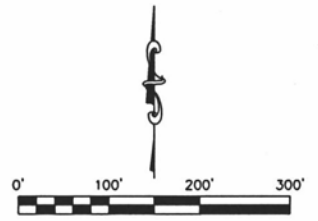


# SITE PLAN FOR PRELIMINARY SUBDIVISION PLAN OF LOTS 1-4, BLOCK 2 OF RUSHMORE CROSSING, FORMERLY TRACT E OF BLOCK 2, LOCATED IN THE SW1/4SE1/4, SE1/4SW1/4, E1/2SW1/4SW1/4 AND W1/2SW1/4SW1/4 OF SECTION 29; THE NE1/4NW1/4 AND NW1/4NE1/4 OF SECTION 32, T2N, R8E, BHM, RAPID CITY, PENNINGTON COUNTY, SOUTH DAKOTA



- LEGEND**
- ▬ BUILDING LINE
  - ⊙ CLEANOUT
  - ⊞ DROP INLET
  - ⊞ ELECTRIC BOX
  - ⊞ FIRE HYDRANT
  - ⊞ LAMP POLE
  - ⊞ POST, BALLARD
  - ⊞ POWER POLE
  - ⊞ SEWER MANHOLE
  - ⊞ SIGN
  - ⊞ TELEPHONE BOX
  - ⊞ TELEPHONE MANHOLE
  - ⊞ TELEPHONE SERVICE
  - ⊞ VAULT
  - ⊞ WATER VALVE

**EXISTING PARKING SPACES**

PROPERTY	TOTAL	HCP
TRACT E	1,067	20

RECEIVED

- NOTES**
1. ALL IMPROVEMENTS SHOWN HEREON ARE EXISTING. NO NEW DEVELOPMENT PROPOSED AS PART OF THIS PLAT.
  2. BASIS OF BEARING IS GEODETIC NORTH.
  3. BUILDING SETBACK LINES ARE PER PREVIOUSLY APPROVED PUD.

AUG 17 2012

Rapid City Community Planning  
& Development Services

- G — GAS LINE
- SA — SANITARY LINE
- ST — STORM LINE
- W — WATER LINE
- BOUNDARY LINE
- SECTION LINE
- ADJOINING LOT LINE
- EASEMENT LINE
- CONTOUR LINE



PREPARED BY:  
**ARLETH &  
ASSOCIATES**

24 CLIFF STREET  
DEADWOOD, SD 57732  
605-578-1637

JOB NO.  
8530

DATE: AUGUST 17, 2012  
REV: \_\_\_\_\_  
SCALE: 1" = 100'

APPROVED: JMA  
DRAWN: FD  
DRAWING: 8530 REPLAT ALL.dwg