

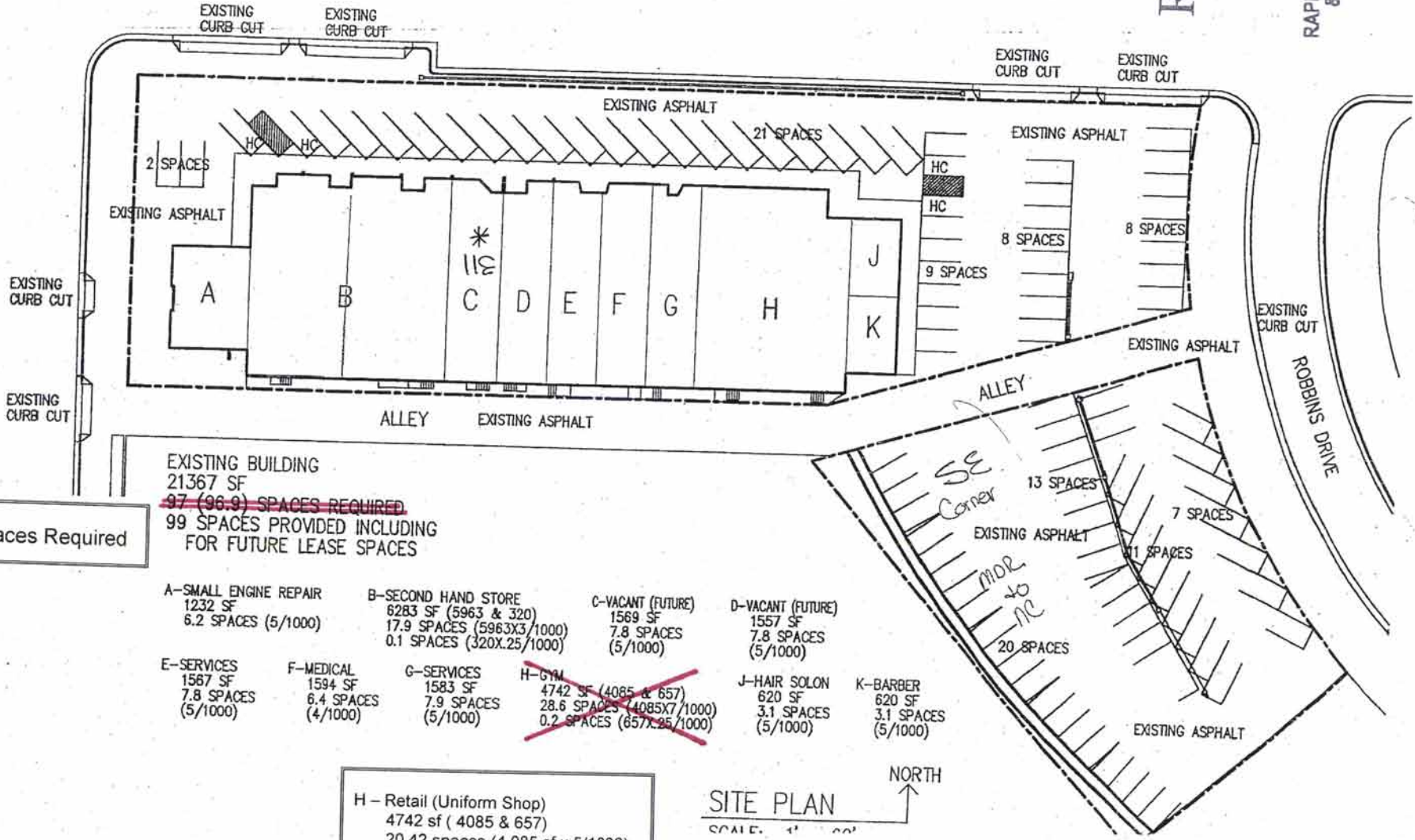
RECEIVED

MAY 25 2012

RAPID CITY COMMUNITY PLANNING & DEVELOPMENT SERVICES

EAST SAINT PATRICK STREET

ELM STREET



EXISTING BUILDING  
21367 SF  
~~97 (96.9) SPACES REQUIRED~~  
99 SPACES PROVIDED INCLUDING  
FOR FUTURE LEASE SPACES

89 Spaces Required

- A-SMALL ENGINE REPAIR  
1232 SF  
6.2 SPACES (5/1000)
- B-SECOND HAND STORE  
6283 SF (5963 & 320)  
17.9 SPACES (5963X3/1000)  
0.1 SPACES (320X.25/1000)
- C-VACANT (FUTURE)  
1569 SF  
7.8 SPACES (5/1000)
- D-VACANT (FUTURE)  
1557 SF  
7.8 SPACES (5/1000)
- E-SERVICES  
1567 SF  
7.8 SPACES (5/1000)
- F-MEDICAL  
1594 SF  
6.4 SPACES (4/1000)
- G-SERVICES  
1583 SF  
7.9 SPACES (5/1000)
- H-GYM  
~~4742 SF (4085 & 657)  
28.6 SPACES (4085X7/1000)  
0.2 SPACES (657X.25/1000)~~
- J-HAIR SOLON  
620 SF  
3.1 SPACES (5/1000)
- K-BARBER  
620 SF  
3.1 SPACES (5/1000)

H - Retail (Uniform Shop)  
4742 sf ( 4085 & 657)  
20.42 spaces (4,085 sf x 5/1000)  
0.2 spaces (657 sf x .25/1000)

SITE PLAN  
SCALE: 1" = 20'  
NORTH