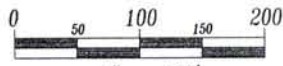


Site Plan - Proposed Lots 1 and 2 of Bauer Subdivision

(formerly Lot 1 of Lot C in the E1/2 NW1/4 less Lot 1 of Thompson Tower Subdivision and less Lot H1)

located in the E1/2 NW1/4 of Section 14, T1N, R7E, BHM, Rapid City, Pennington County, South Dakota

Prepared by:
Fisk Land Surveying & Consulting Engineers, Inc.
P.O. Box 8154
Rapid City, SD 57709
(605) 348-1538
Project No. 12-04-02

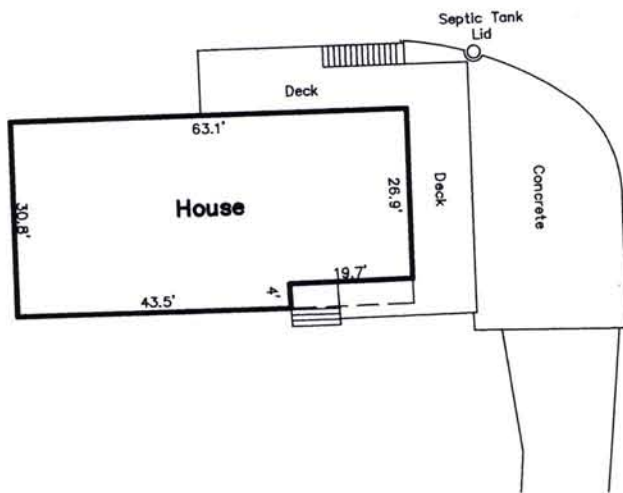


1" = 100'
April 12, 2012

PRELIMINARY

- = Found Survey Monument #5 Rebar or as noted
- ◆ = Found Concrete ROW Monument
- ccc = Found Survey Monument #5 Rebar or as noted (used as crossing closing corner)
- = Found Survey Monument #5 Rebar or as noted (not accepted this survey)
- ⊙ = Set Rebar with cap marked "RW Fisk 6565"

House Detail



Lot C
Skyview Subdivision

Lot 1
5.19 Ac

Lot 2
Trimbic Subdivision

Curve Data:
R=392.30'
L=122.87'
Cb=N20°3'00"E
Δ=17°56'45"

Curve Data:
R=1446.70'
L=163.12'
Cb=N12°46'02"E
Δ=6°22'19"

Curve Data:
R=1400.70'
L=284.95'
Cb=N23°01'40"E
Δ=11°39'22"

US Highway 16

Skyline Drive

Tower Road

Lot 2B
Eastridge Subdivision

Lot 2A

Easement for Access & Utilities
Misc Bk 102,
Pg 4596

#4 Rebar S89°58'32"E 199.00'

750.75'

632.95'

N83°18'E

128.2'

90.0'

295.27'

130.44'

#4 Rebar

N73°12'34"W

S47°58'23"W

LS 1019

LS 1771

Balance of Lot B of Lot C

N89°56'08"E

191.48'

N28°30'45"E

124.10'

394.09'

Sign

13.4'

S19°47'41"W

N89°59'01"W

229.12'

LS 1771

Pipe

Lot A of Lot C

Section 1/18th Line

Section 1/4 Line

Section 1/4 Line

Section 14,
T1N, R7E, BHM,
Center 1/4

Section 1/4 Line