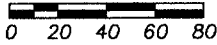




### EXHIBIT A

Vacated Access Easement  
within the Blocked Alley between Tract B and Tract F  
of Block 1 of Feigel Subdivision,  
Rapid City, Pennington County, South Dakota.

SCALE: 1" = 60'



January 11, 2012

#### NOTES:

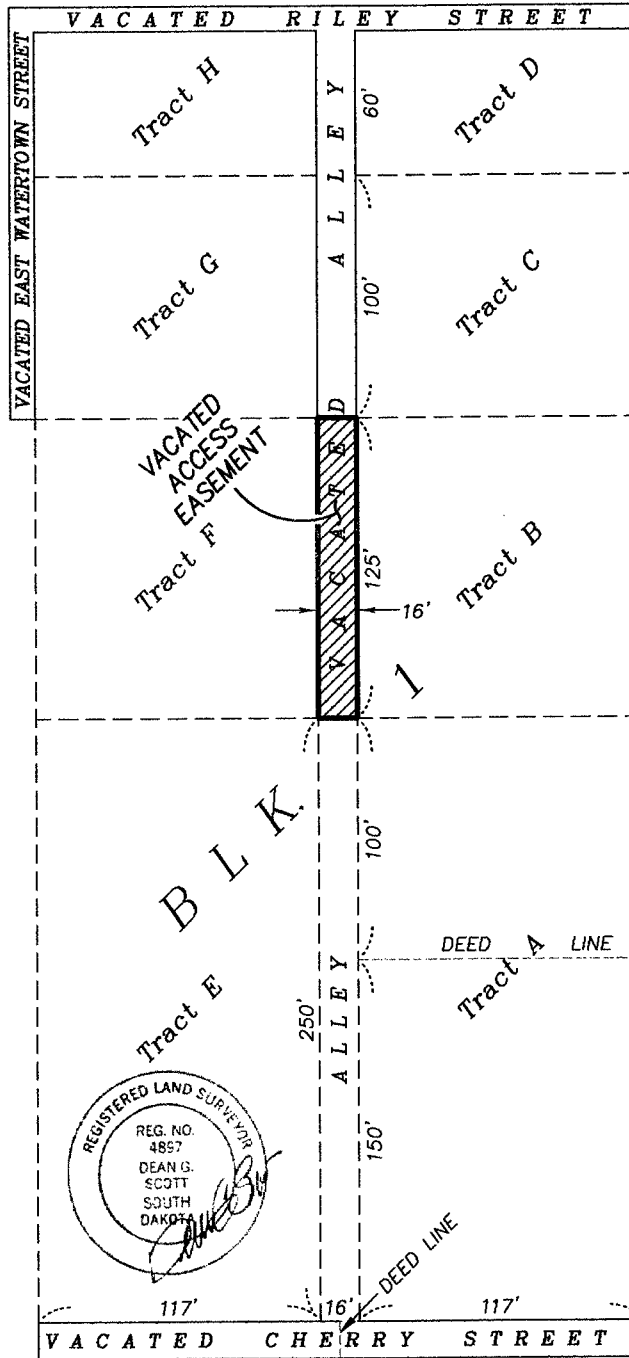
1. DIMENSIONS SHOWN ARE OF RECORD.
2. ACCESS EASEMENT VACATED PER THIS INSTRUMENT WILL REMAIN AS DRAINAGE & UTILITY EASEMENT.
3. PRIOR VACATION OF R.O.W. WITHIN ALLEY, RILEY STREET, AND EAST WATERTOWN STREET RECORDED IN BOOK 79, PAGE 5800 IN THE OFFICE OF THE PENNINGTON COUNTY REGISTER OF DEEDS.
4. PRIOR VACATION OF R.O.W. WITHIN CHERRY STREET RECORDED IN BOOK 132, PAGE 8077 IN THE OFFICE OF THE PENNINGTON COUNTY REGISTER OF DEEDS.

B L K. 4

STREET  
WATERTOWN  
EAST

RILEY STREET

STREET  
NORTH  
EAST



PREPARED BY:



**D.C. Scott**  
SURVEYORS, INC.  
3153 ANDERSON ROAD  
RAPID CITY, SD 57703  
(605) 393-2400

CHERRY STREET