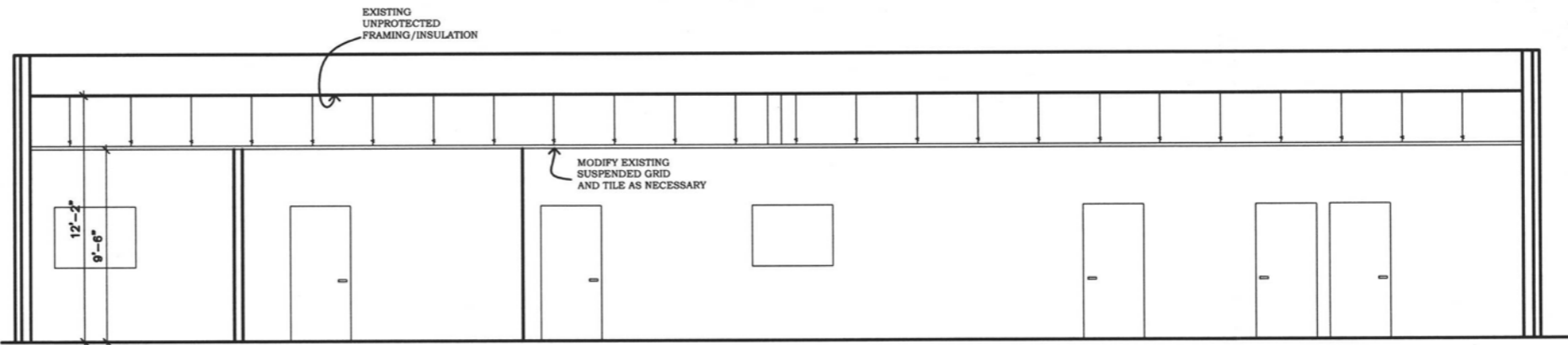


DRAWING LEGEND:

- DEMO
- NEW WALL CONSTRUCTION
- ⊕ NEW DUPLEX
- ⊕ NEW DEDICATED/SPECIAL EQUIPMENT OUTLET
- ⊕ EXISTING DUPLEX
- ⊕ EXISTING DEDICATED/SPECIAL EQUIPMENT OUTLET
- ⊕ EXISTING DATA / COM LOCATION
- ⊕ NEW FIRE ALARM SPEAKER STROBE
- ⊕ NEW FIRE ALARM STROBE
- ⊕ NEW FIRE ALARM SMOKE/HEAT DETECTOR
- ⊕ NEW FIRE ALARM MANUAL PULL STATION

GENERAL NOTES:

1. MODIFY HVAC SYSTEMS AS NEEDED FOR REMODELING. RELOCATE AND RE-USE IF POSSIBLE.
2. MODIFY ELECTRICAL LIGHTING AND SYSTEMS AS NEEDED FOR REMODELING. RELOCATE AND RE-USE IF POSSIBLE.
3. FIRE ALARM DEVICES ARE SHOWN IN LIKELY LOCATIONS. FINAL LAYOUT AND LOCATION OF ALL FIRE ALARM DEVICES/EQUIPMENT SHALL BE DETERMINED BY THE FIRE ALARM CONTRACTOR AND APPROVED BY THE RAPID CITY FIRE DEPARTMENT.
4. HEATING AND AIR CONDITIONING UNIT IS A ROOF-TOP MOUNTED UNIT
5. HOT WATER HEATER IS LOCATED ABOVE THE CEILING, NEAR THE RESTROOMS

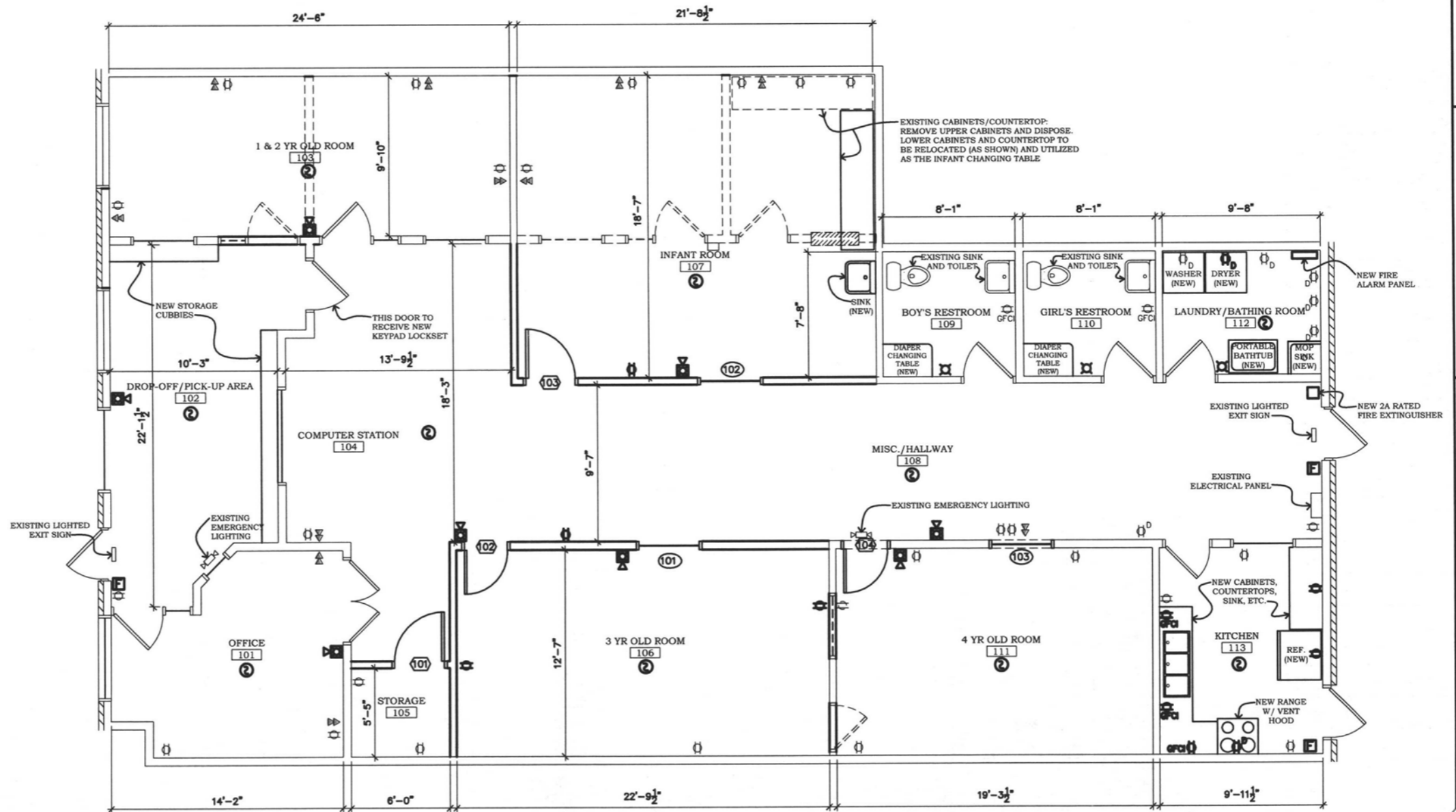


2 BUILDING SECTION  
1/8"=1'-0"

ROOM SCHEDULE				
ROOM #	FLOOR	WALLS	CEILING	LIGHTING
101	EXISTING CARPET TO REMAIN	EXISTING TO REMAIN	EXISTING TO REMAIN	EXISTING TO REMAIN
102	EXISTING CARPET TO REMAIN	EXISTING TO REMAIN	EXISTING TO REMAIN	EXISTING TO REMAIN
103	NEW CARPET AND BASE	PATCHED AND PAINTED	MODIFY AS NEEDED	MODIFY AS NEEDED
104	EXISTING CARPET TO REMAIN	PATCHED AND PAINTED	MODIFY AS NEEDED	MODIFY AS NEEDED
105	NEW CARPET AND BASE	PATCHED AND PAINTED	MODIFY AS NEEDED	MODIFY AS NEEDED
106	NEW CARPET AND BASE	PATCHED AND PAINTED	MODIFY AS NEEDED	MODIFY AS NEEDED
107	EXISTING VCT W/ NEW CARPET	PATCHED AND PAINTED	MODIFY AS NEEDED	MODIFY AS NEEDED
108	EXISTING CARPET TO REMAIN	PATCHED AND PAINTED	MODIFY AS NEEDED	MODIFY AS NEEDED
109	EXISTING TO REMAIN	PATCHED AND PAINTED	NO CHANGE	NO CHANGE
110	EXISTING TO REMAIN	PATCHED AND PAINTED	NO CHANGE	NO CHANGE
111	NEW CARPET AND BASE	PATCHED AND PAINTED	NO CHANGE	NO CHANGE
112	EXISTING CONC. FLOOR TO REMAIN	PATCHED AND PAINTED	NO CHANGE	NO CHANGE
113	NEW VCT AND BASE	PATCHED AND PAINTED	NO CHANGE	NO CHANGE

NEW DOOR SCHEDULE		
DOOR #	SIZE	REMARKS
101	5'-0" x 6'-8"	NEW FRAME, DOOR AND HARDWARE TO MATCH EXISTING
102	3'-0" x 6'-8"	NEW FRAME, DOOR AND HARDWARE TO MATCH EXISTING
103	3'-0" x 6'-8"	NEW FRAME, DOOR AND HARDWARE TO MATCH EXISTING
104	3'-0" x 6'-8"	NEW FRAME, DOOR AND HARDWARE TO MATCH EXISTING

NEW WINDOW SCHEDULE		
WINDOW #	SIZE	REMARKS
101	4'-0" x 4'-0"	NEW WOOD FRAMED WINDOW TO MATCH EXISTING
102	4'-0" x 4'-0"	NEW WOOD FRAMED WINDOW TO MATCH EXISTING
103	4'-0" x 4'-0"	NEW WOOD FRAMED WINDOW TO MATCH EXISTING



1 REMODEL PLAN  
1/8"=1'-0" NORTH

RECEIVED

JAN 30 2012

RAPID CITY COMMUNITY PLANNING & DEVELOPMENT SERVICES

Gina's Daycare  
2626 W. Main - Rapid City, South Dakota

DATE: 11-25-11

DRAWN BY:

SHEET TITLE: REMODEL PLAN