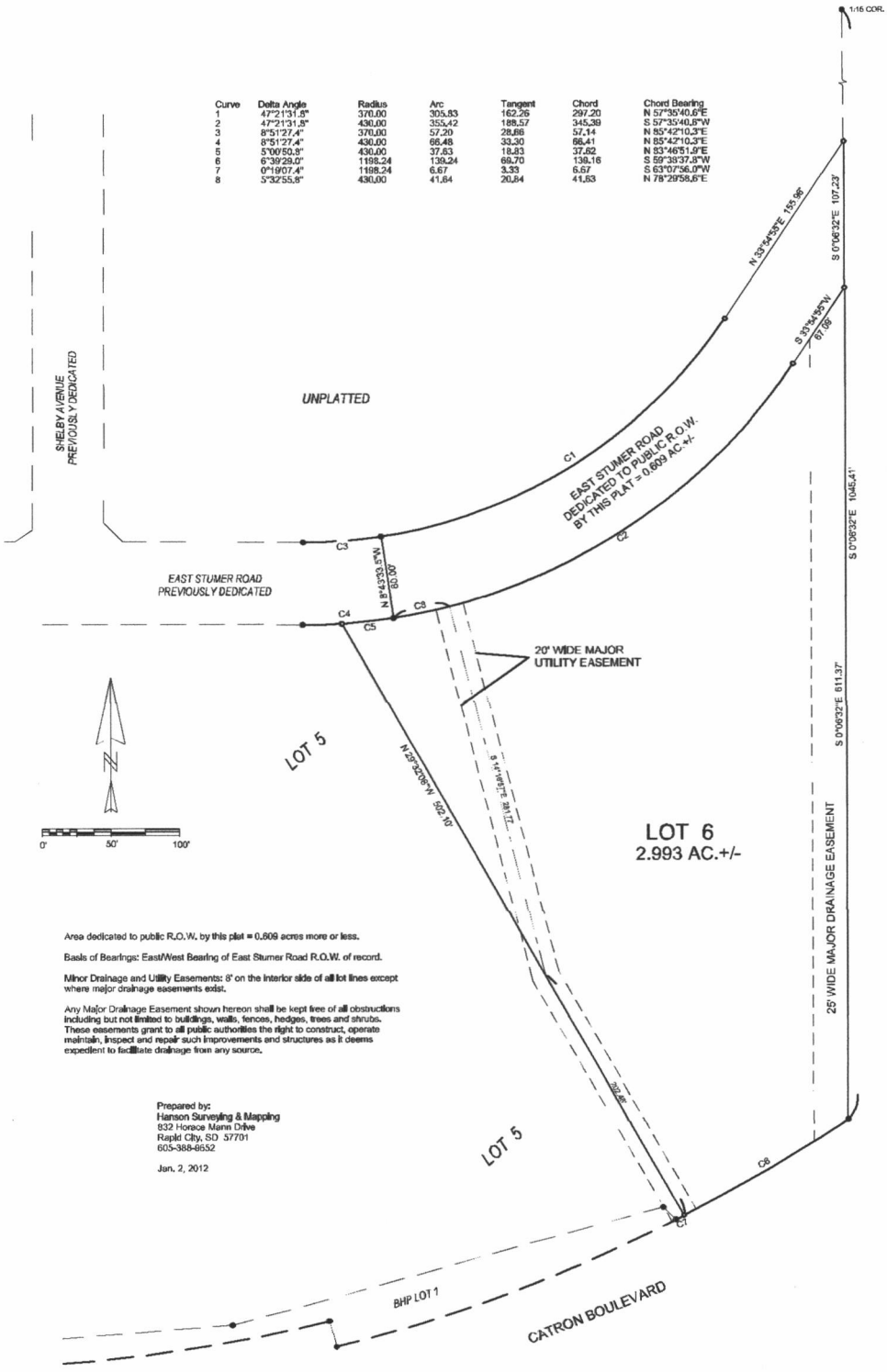


PRELIMINARY PLAT
LOT 6 OF NORTH 80 SUBDIVISION
 (FORMERLY UNPLATTED PORTION OF GOVT. LOT 2 IN SECTION 19, T1N, R8E, B.H.M.)
 RAPID CITY, PENNINGTON COUNTY, SOUTH DAKOTA

Curve	Delta Angle	Radius	Arc	Tangent	Chord	Chord Bearing
1	47°21'31.5"	370.00	305.33	162.29	297.20	N 57°50'40.6"E
2	47°21'31.5"	430.00	355.42	188.57	345.39	S 57°35'40.8"W
3	8°51'27.4"	370.00	57.20	28.88	57.14	N 85°42'10.3"E
4	8°51'27.4"	430.00	69.48	33.30	69.41	N 85°42'10.3"E
5	5°00'50.8"	430.00	37.63	18.83	37.82	N 83°48'51.9"E
6	6°39'29.0"	1188.24	139.24	68.70	139.16	S 59°33'37.9"W
7	0°19'07.4"	1188.24	6.67	3.33	6.67	S 63°07'56.0"W
8	5°32'55.8"	430.00	41.64	20.84	41.63	N 78°29'58.6"E



SHERBY AVENUE
PREVIOUSLY DEDICATED

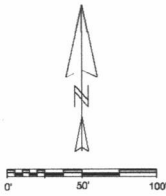
UNPLATTED

EAST STUMER ROAD
PREVIOUSLY DEDICATED

EAST STUMER ROAD
DEDICATED TO PUBLIC R.O.W.
BY THIS PLAT = 0.809 AC +/-

20' WIDE MAJOR
UTILITY EASEMENT

25' WIDE MAJOR DRAINAGE EASEMENT



Area dedicated to public R.O.W. by this plat = 0.809 acres more or less.
 Basis of Bearings: East/West Bearing of East Stumer Road R.O.W. of record.
 Minor Drainage and Utility Easements: 8' on the interior side of all lot lines except where major drainage easements exist.
 Any Major Drainage Easement shown hereon shall be kept free of all obstructions including but not limited to buildings, walls, fences, hedges, trees and shrubs. These easements grant to all public authorities the right to construct, operate, maintain, inspect and repair such improvements and structures as it deems expedient to facilitate drainage from any source.

Prepared by:
 Hanson Surveying & Mapping
 832 Horace Mann Drive
 Rapid City, SD 57701
 605-388-8652
 Jan. 2, 2012

Lazy P6 Land Co. Inc
Lot 6 Preliminary Plat
1/12/2012