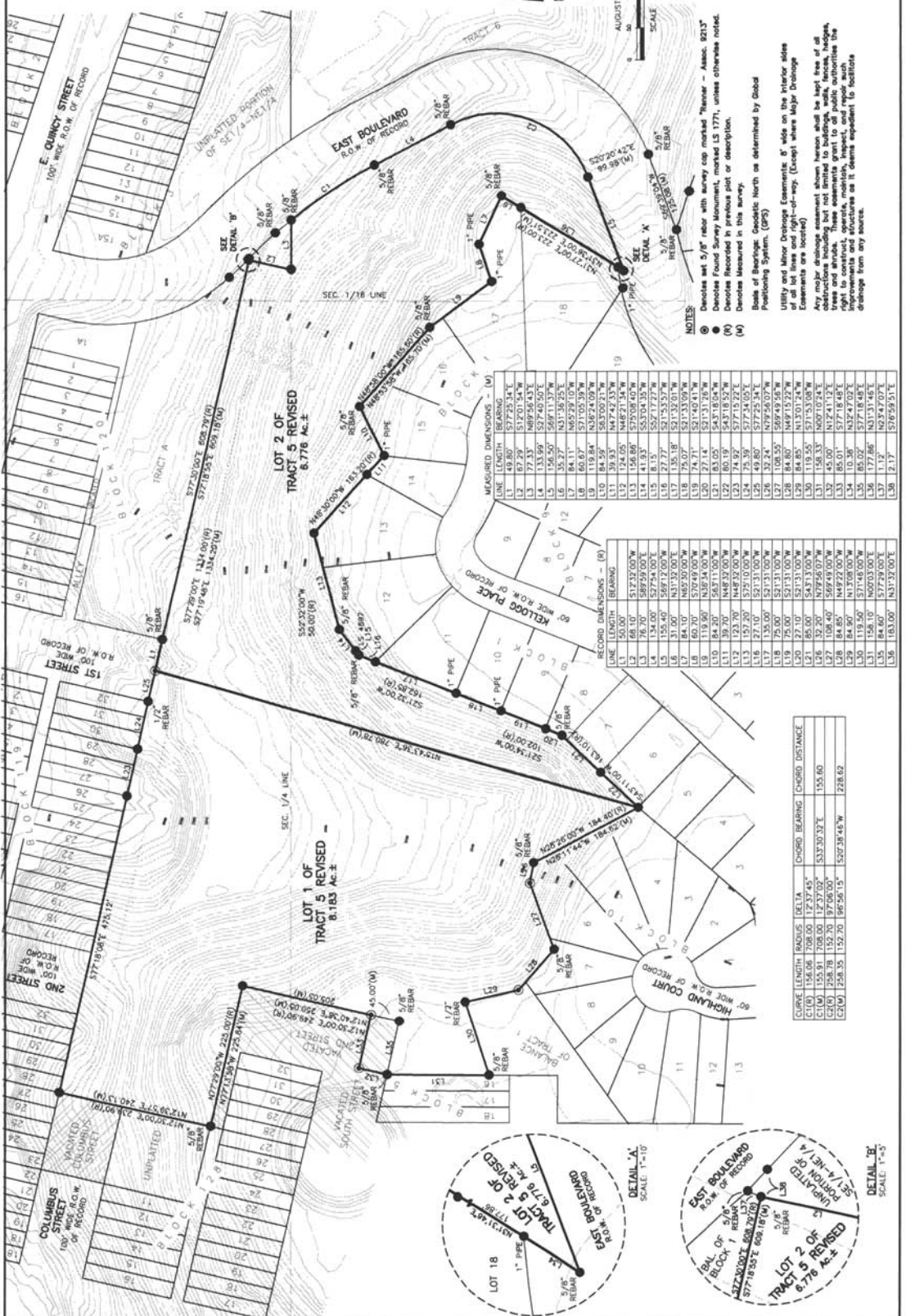


PLAT OF
 LOTS 1 AND 2 OF TRACT 5 REVISED,
 SIGNAL HEIGHTS ADDITION

(formerly Tract 5 Revised of Signal Heights Addition and a portion of
 Vacated South Street)
 LOCATED IN THE E1/2,
 SECTION 1, T1N, R7E, BHM,
 RAPID CITY, PENNINGTON COUNTY, SOUTH DAKOTA



- NOTES:
- (1) Details not 5/8" rebar with survey cap marked "Rebar - James, 8213"
 - (2) Details Found Survey Monument marked L.S. 1771, unless otherwise noted.
 - (3) Details Measured in this survey.
 - (4) Details Measured in previous plat or description.
 - (M) Denotes Bearings, Grids North as determined by Global Positioning System, (GPS)
- Utility and minor drainage easements 8' wide on the interior sides of lots shown on this plat. (Except where large drainage easements are located)
- Any major drainage easement shown hereon shall be kept free of all obstructions including but not limited to buildings, walls, fences, hedges, trees, shrubs, etc. and shall be maintained in accordance with the right to construct, operate, maintain, inspect and repair such improvements and structures as it deems expedient to facilitate drainage from any source.

MEASURED DIMENSIONS - (M)

LINE	LENGTH	BEARING
L1	67.29	S172°01'54"W
L2	77.33	N89°56'43"E
L3	133.99	S27°40'50"E
L4	156.50	S51°13'37"W
L5	184.11	N62°52'51"W
L6	60.67	S71°00'39"W
L7	119.84	N46°54'09"W
L8	119.84	N46°54'09"W
L9	124.65	N46°51'54"W
L10	158.93	N42°53'33"W
L11	158.93	N42°53'33"W
L12	158.93	N42°53'33"W
L13	158.93	N42°53'33"W
L14	41.93	S53°04'35"W
L15	55.00	S53°04'35"W
L16	97.37	S53°04'35"W
L17	135.18	S31°32'01"W
L18	75.07	S21°33'09"W
L19	74.71	S14°04'11"W
L20	83.50	S51°30'25"W
L21	83.05	S43°18'05"W
L22	80.19	S43°18'05"W
L23	74.92	S47°12'22"E
L24	75.39	S77°34'05"E
L25	132.24	N27°52'02"E
L26	108.55	S69°49'54"W
L27	84.80	N49°15'22"W
L28	84.85	N13°01'52"W
L29	84.85	N13°01'52"W
L30	158.33	N67°02'38"E
L31	158.33	N67°02'38"E
L32	45.00	N12°41'12"E
L33	85.01	S77°18'48"E
L34	10.36	N13°08'00"W
L35	158.10	N13°08'00"W
L36	172.86	N41°14'41"E
L37	11.12	S28°47'02"E
L38	12.17	N76°59'51"E

RECORD DIMENSIONS - (R)

LINE	LENGTH	BEARING
L1	68.10	S172°02'00"W
L2	76.70	S89°57'00"E
L3	156.40	S27°40'00"E
L4	158.40	S51°13'00"W
L5	184.10	N62°53'00"W
L6	61.00	S71°02'00"W
L7	120.00	N47°00'00"W
L8	120.00	N47°00'00"W
L9	124.65	N46°51'54"W
L10	158.93	N42°53'33"W
L11	158.93	N42°53'33"W
L12	158.93	N42°53'33"W
L13	158.93	N42°53'33"W
L14	41.93	S53°04'35"W
L15	55.00	S53°04'35"W
L16	97.37	S53°04'35"W
L17	135.18	S31°32'01"W
L18	75.07	S21°33'09"W
L19	74.71	S14°04'11"W
L20	83.50	S51°30'25"W
L21	83.05	S43°18'05"W
L22	80.19	S43°18'05"W
L23	74.92	S47°12'22"E
L24	75.39	S77°34'05"E
L25	132.24	N27°52'02"E
L26	108.55	S69°49'54"W
L27	84.80	N49°15'22"W
L28	84.85	N13°01'52"W
L29	84.85	N13°01'52"W
L30	158.33	N67°02'38"E
L31	158.33	N67°02'38"E
L32	45.00	N12°41'12"E
L33	85.01	S77°18'48"E
L34	10.36	N13°08'00"W
L35	158.10	N13°08'00"W
L36	172.86	N41°14'41"E
L37	11.12	S28°47'02"E
L38	12.17	N76°59'51"E

CURVE	LENGTH	RADIUS	DELTA	CHORD	BEARING	CHORD DISTANCE
(C1)	108.00	108.00	90°00'00"	152.96	S45°00'00"	108.00
(C2)	155.20	202.00	127°37'02"	153.30	S33°39'32"E	155.60
(C3)	158.33	158.33	90°00'00"	222.04	S45°00'00"	158.33
(C4)	258.35	152.70	187°56'15"	1507.39	S49°44'W	228.62

