

LOTS 14 THRU 22 OF BLOCK 7 AND LOTS 14 THRU 21 OF BLOCK 8,

RED ROCK MEADOWS SUBDIVISION

(formerly a portion of NW1/4 of the NW1/4)

LOCATED IN NW1/4 OF THE NW1/4,

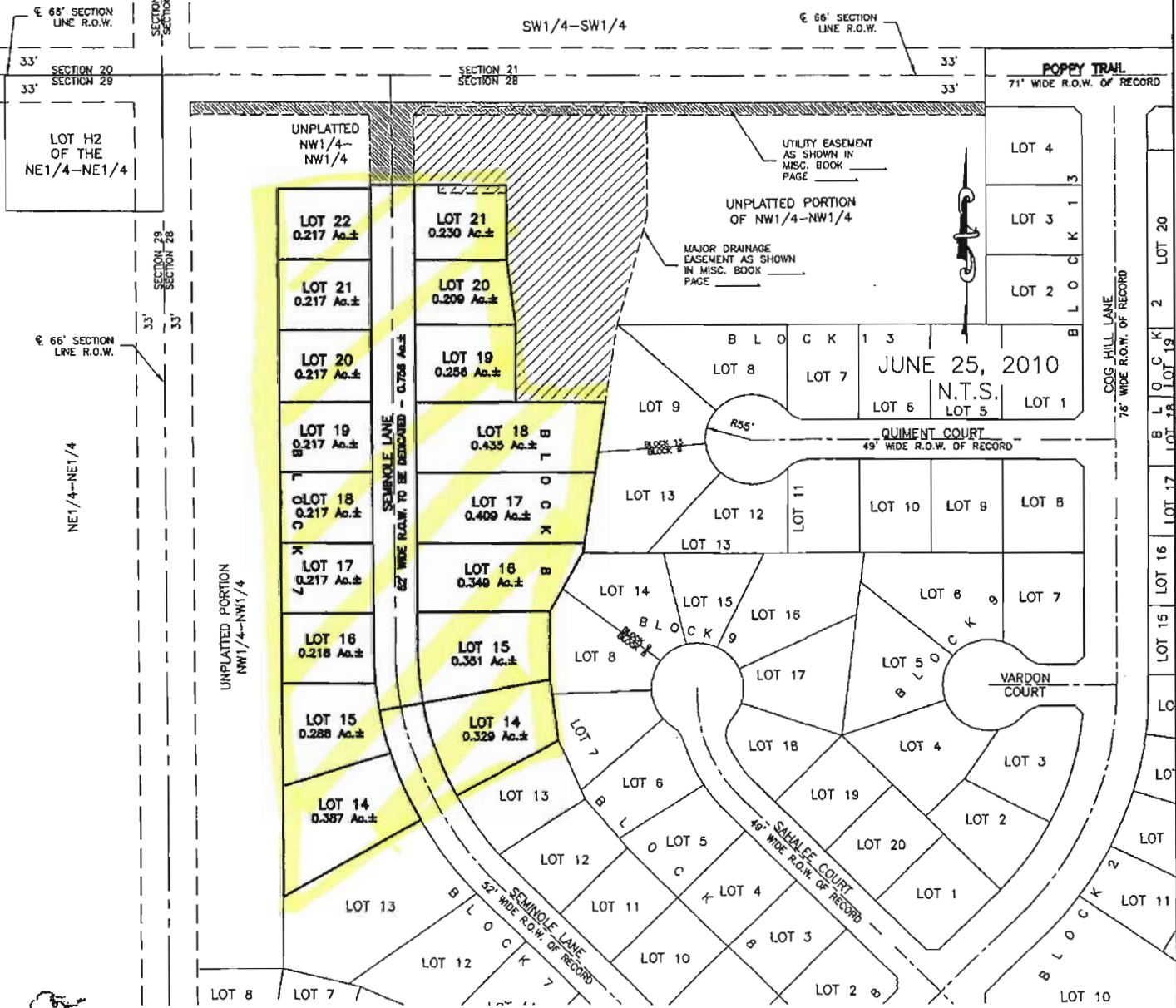
SECTION 28, T1N, R7E, BHM

RAPID CITY, PENNINGTON COUNTY, SOUTH DAKOTA

RECEIVED

SEP 02 2011

Rapid City Growth
Management Department



RENNER & ASSOCIATES, LLC.

616 SIXTH ST. * RAPID CITY, SD 57701
 PHONE: 605/721-7310 * FAX: 605/721-7313
 EMAIL: GARY@RENNERASSOC.COM



CITY HALL 1903