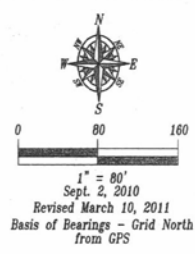


Plat of Lots 19R and 22RA of Una Del Acres No. 2

(formerly all of Lots 19 and 22R of Una Del Acres No. 2)

Located in the SE1/4 of Section 21, T1N, R7E, BHM,
Rapid City, Pennington County, South Dakota



Prepared by:
Fisk Land Surveying &
Consulting Engineers, Inc.
P.O. Box 8164
Rapid City, South Dakota 57709
605-348-1538
Project # 10-08-05

LEGEND

- = Found Survey Monument LS 4208 or as noted
- ⊙ = Set Rebar with cap marked "RW Fisk 6565"

See Plat Book 22 Page 146 and Plat Book 9 Page 225 for record information

8' Utility and Minor Drainage Easements on the interior side of all lot lines.

Any major drainage easement shown hereon shall be kept free of all obstructions including, but not limited to, buildings, walls, fences, hedges, trees and shrubs. These easements grant to all public authorities the right to construct, operate, maintain, inspect and repair such improvements and structures as it deems expedient to facilitate drainage from any source.

Surveyor's Note

Retracement of the subject property and adjacent parcels revealed multiple monumentation, conflicting boundary evidence and significant departures from record lot dimensions and bearings.

Monuments whose locations appear to represent a faithful attempt to retrace the original survey have been accepted and incorporated into the boundary shown hereon.

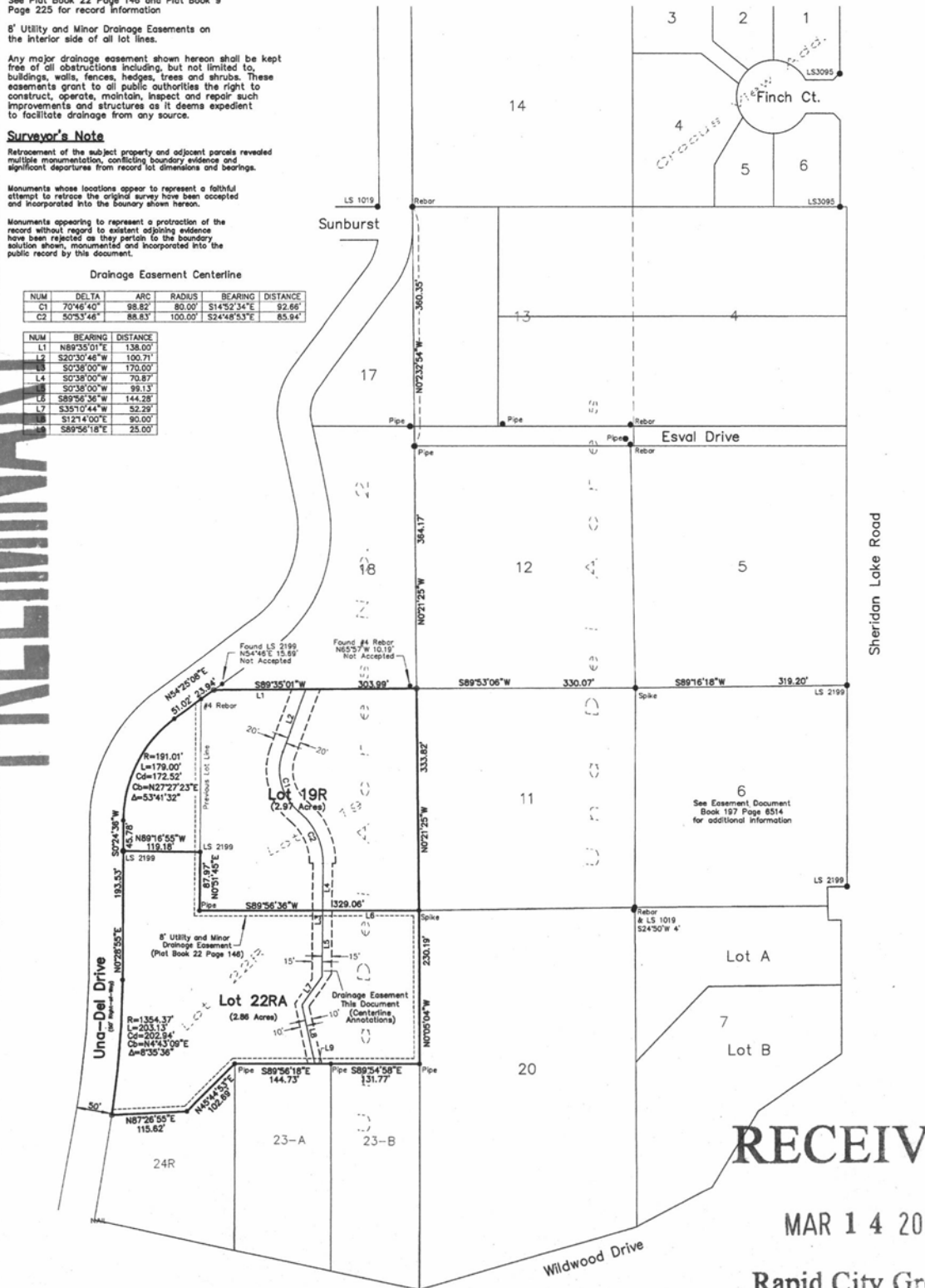
Monuments appearing to represent a protraction of the record without regard to existent adjoining evidence have been rejected as they pertain to the boundary solution shown, monumented and incorporated into the public record by this document.

Drainage Easement Centerline

NUM	DELTA	ARC	RADIUS	BEARING	DISTANCE
C1	70°46'40"	98.82'	80.00'	S14°52'34"E	92.66'
C2	50°53'46"	86.83'	100.00'	S24°48'53"E	85.94'

NUM	BEARING	DISTANCE
L1	N89°35'01"E	138.00'
L2	S20°30'48"W	100.71'
L3	S0°38'00"W	170.00'
L4	S0°38'00"W	70.87'
L5	S0°38'00"W	99.13'
L6	S89°56'55"W	144.28'
L7	S35°10'44"W	52.25'
L8	S12°14'00"E	90.00'
L9	S89°56'18"E	25.00'

PRELIMINARY



RECEIVED

MAR 14 2011

Rapid City Growth
Management Department