

DRAWING CONTENTS

COVER

ARCHITECTURAL DRAWINGS

- A1.1 SITE PLAN
- A2.1 FIRST LEVEL PARKING PLAN
- A2.2 SECOND LEVEL PARKING PLAN
- A2.3 THIRD LEVEL PARKING PLAN
- A2.4 FOURTH LEVEL PARKING PLAN
- A2.5 FIFTH LEVEL PARKING PLAN
- A2.6 FIFTH LEVEL REFLECTED CEILING PLAN
- A2.7 ROOF PLAN
- A3.1 EXTERIOR ELEVATIONS
- A3.2 EXTERIOR ELEVATIONS
- A3.3 BUILDING SECTIONS
- A3.4 BUILDING SECTIONS
- A3.5 BUILDING SECTIONS
- A3.6 WALL SECTIONS
- A3.7 WALL SECTIONS
- A3.8 STAIR SECTIONS
- A3.9 STAIR SECTIONS
- A3.10 ELEVATOR PLANS AND SECTIONS
- A3.11 DOOR AND ROOM FINISH SCHEDULES

STRUCTURAL DRAWINGS

- S0 STRUCTURAL NOTES
- S0.1 IBC INSPECTION TABLES AND ABBREVIATIONS
- S0.2 WIND UPLIFT AND SNOW DRIFT PLAN
- S1 EXISTING FOUNDATION PLAN
- S2 EXISTING FOUNDATION PLAN
- S3 EXISTING SECOND LEVEL FRAMING PLAN
- S4 EXISTING SECOND LEVEL FRAMING PLAN
- S5 EXISTING THIRD LEVEL FRAMING PLAN
- S6 EXISTING THIRD LEVEL FRAMING PLAN
- S7 FOURTH LEVEL FRAMING PLAN
- S8 FOURTH LEVEL FRAMING PLAN
- S9 FIFTH LEVEL FRAMING PLAN
- S10 FIFTH LEVEL FRAMING PLAN
- S11 ROOF FRAMING PLAN
- S12 ROOF FRAMING PLAN
- S13 SECTIONS
- S14 SECTIONS
- S15 SECTIONS
- S16 SECTIONS
- S17 SECTIONS
- S18 SECTIONS
- S19 STAIRCASE FRAMING PLANS AND SCHEDULES
- S20 STAIRCASE FRAMING PLANS

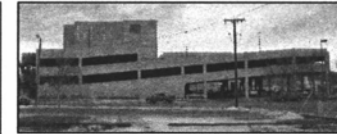
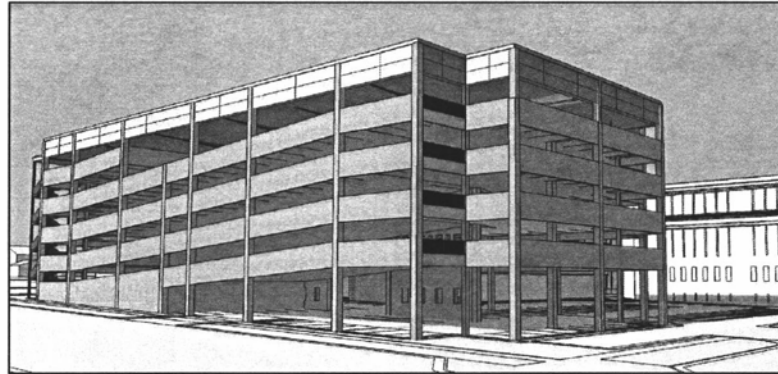
MECHANICAL DRAWINGS

- M00 MECHANICAL LEGEND AND SHEET INDEX
- M1.1 FIRST LEVEL PLUMBING PLAN
- M1.2 SECOND LEVEL PLUMBING PLAN
- M1.3 THIRD LEVEL PLUMBING PLAN
- M1.4 FOURTH LEVEL PLUMBING AND MECHANICAL PLAN
- M1.5 FIFTH LEVEL PLUMBING PLAN
- M1.6 ROOF PLUMBING PLAN
- ME1.1 MECHANICAL/ELECTRICAL PLAN

ELECTRICAL DRAWINGS

- E00 ELECTRICAL LEGEND AND SHEET INDEX
- E1.1 FIRST LEVEL ELECTRICAL PLAN
- E1.2 SECOND LEVEL ELECTRICAL PLAN
- E1.3 THIRD LEVEL ELECTRICAL PLAN
- E1.4 FOURTH LEVEL ELECTRICAL PLAN
- E1.5 FIFTH LEVEL ELECTRICAL PLAN
- E2.1 LIGHT FIXTURE SCHEDULE AND PANEL SCHEDULES
- E2.2 ELECTRICAL DETAILS
- ME1.1 MECHANICAL/ELECTRICAL SCHEDULES

PENNINGTON COUNTY CAMPUS EXPANSION PARKING STRUCTURE ADDITION RAPID CITY, SOUTH DAKOTA

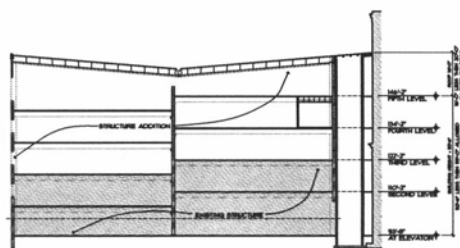


EXISTING PHOTOS OF PARKING RAMP STRUCTURE



CODE INFORMATION

CODES USED: 2006 INTERNATIONAL BUILDING CODE
 OCCUPANCY GROUP: OPEN PARKING GARAGE (S-2) IBC 406.3
 TYPE OF CONSTRUCTION: TYPE II-B
 ALLOWABLE AREA/STORIES WITH INCREASES:
 32,500 SF / 5 STORIES/TIERS
 (TABLE 503 INCREASED BY 406.3.6)
 ACTUAL AREA/STORIES: 30,300 SF/TIER X 5 TIERS
 ALLOWABLE HEIGHT: 55' BUILDING HEIGHT (TABLE 503)
 +20' ROOF STRUCTURE HEIGHT (504.3)
 ACTUAL HEIGHT: 52'-6" BUILDING HEIGHT
 + 16'-0" ROOF STRUCTURE



LEGEND

- ① KEY NOTE
- ◊ WALL TYPE
- ROOM NAME AND NUMBER
- OPENING TYPE
- DOOR NUMBER
- DRAWING NUMBER
- SHEET NUMBER
- SECTION OR DETAIL TAG
- CENTERLINE
- PROPERTY LINE
- HEIGHT - MAIN FLOOR + 100'-0"
- STEEL ANGLE
- ROUND
- SQUARE

ABBREVIATIONS

(ALL MAY NOT BE USED IN DRAWING SET)

- / ABOVE FINISH FLOOR
- APP ALUMINUM
- APC ACOUSTIC PANEL CEILING
- BRG BEARING
- CC CENTER TO CENTER
- CMU CONCRETE MASONRY UNIT
- COORD COORDINATE
- CPT CARPET
- CT CERAMIC TILE
- DR DOOR
- EA EACH
- ELECT ELECTRICAL
- EQ EQUAL
- FR FRAME
- FOOT FOOT
- GYPBD GYPSUM BOARD
- HT HOLLOW METAL
- IG INSULATED GLASS
- MAX MAXIMUM
- MECHL MECHANICAL
- FIN FINISH
- CC CENTER
- PT PAINT
- REV REVERSE
- SPH SPHERICAL
- STRUCT STRUCTURAL
- TO BE DETERMINED
- TEXT TEXTURE
- TSG TYPICAL SAFETY GLASS
- TYP TYPICAL
- UNO UNLESS NOTED OTHERWISE
- VB VINYL BASE
- VCT VINYL COMPOSITION TILE
- W/ WITH
- SD SURE DRY
- US WIRE GLASS



PROJECT ARCHITECT:
ARC INTERNATIONAL
 5806 SHERIDAN LAKE ROAD
 RAPID CITY, SD 57702
 P. 605-341-2066

STRUCTURAL ENGINEER:
ALBERTSON ENGINEERING, INC.
 3202 WEST MAIN SUITE C
 RAPID CITY, SD 57702
 P. 605-343-9406

MECHANICAL/ELECTRICAL ENGINEER:
SKYLINE ENGINEERING, LLC.
 415 12TH STREET
 RAPID CITY, SD 57701
 P. 605-737-3800

DATE: FEBRUARY 16, 2011

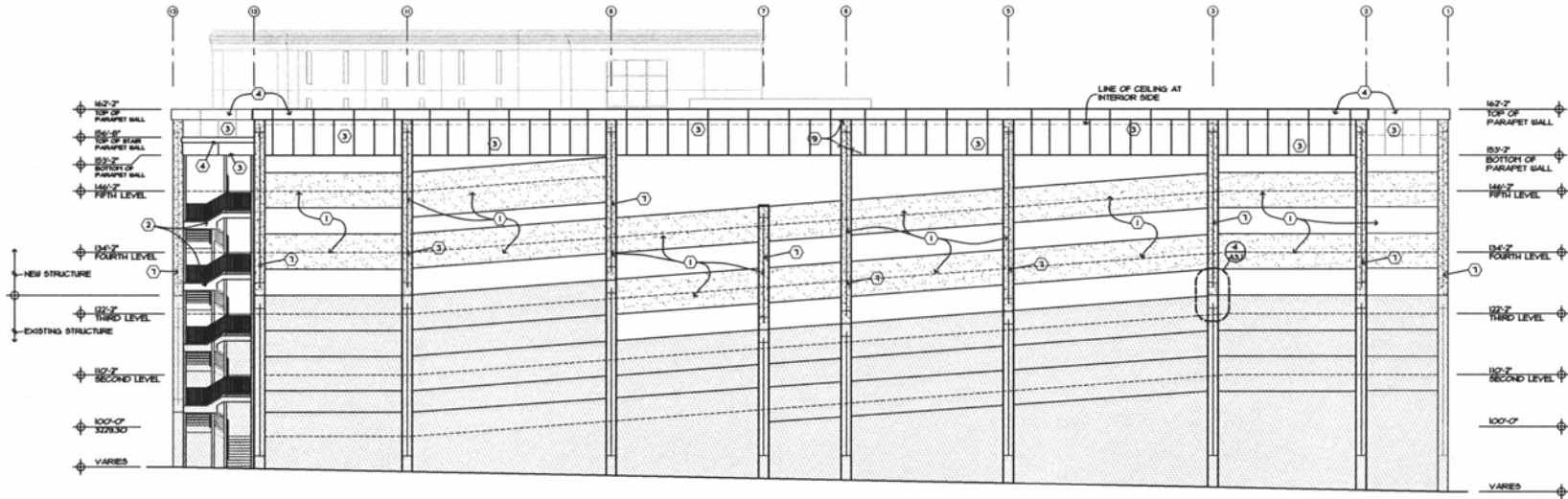
PROJECT MANAGER: CHRIS OLNEY

PROJECT NUMBER: 2010-027.1

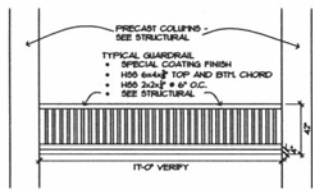


**PENNINGTON COUNTY
 CAMPUS EXPANSION
 PARKING STRUCTURE ADDITION**
 RAPID CITY, SOUTH DAKOTA

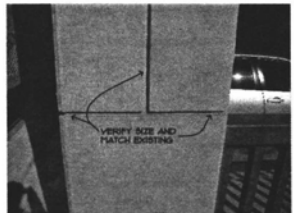
COVER



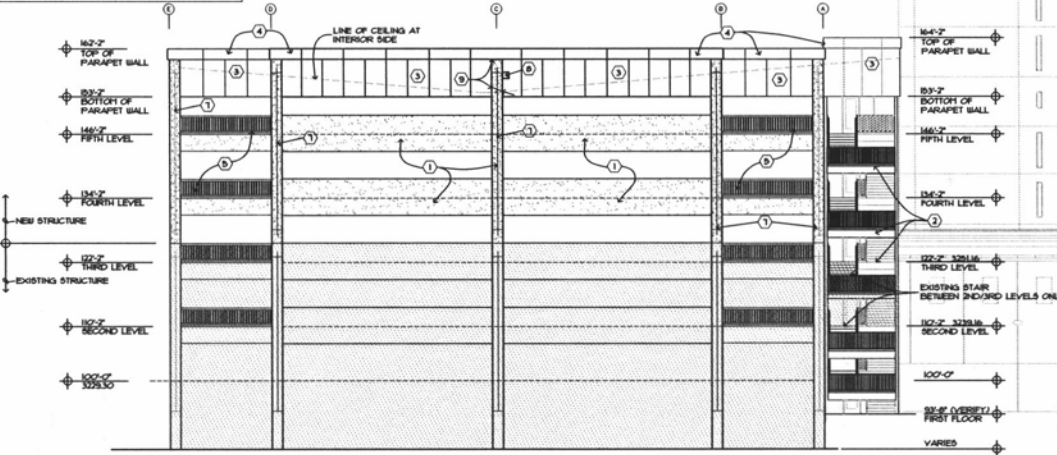
1 EAST ELEVATION
A31 3/32"x1'-0"



3 TYPICAL GUARDRAIL
A31 1/4"x1'-0"



4 EXISTING REVEALS
A31 NTS



PROJECT ARCHITECT:
ARC INTERNATIONAL
3608 SHERIDAN LAKE ROAD
RAPID CITY, SD 57702
P. 605-341-2066

STRUCTURAL ENGINEER:
ALBERTSON ENGINEERING, INC.
3202 WEST MAIN STREET C
RAPID CITY, SD 57702
P. 605-343-9606

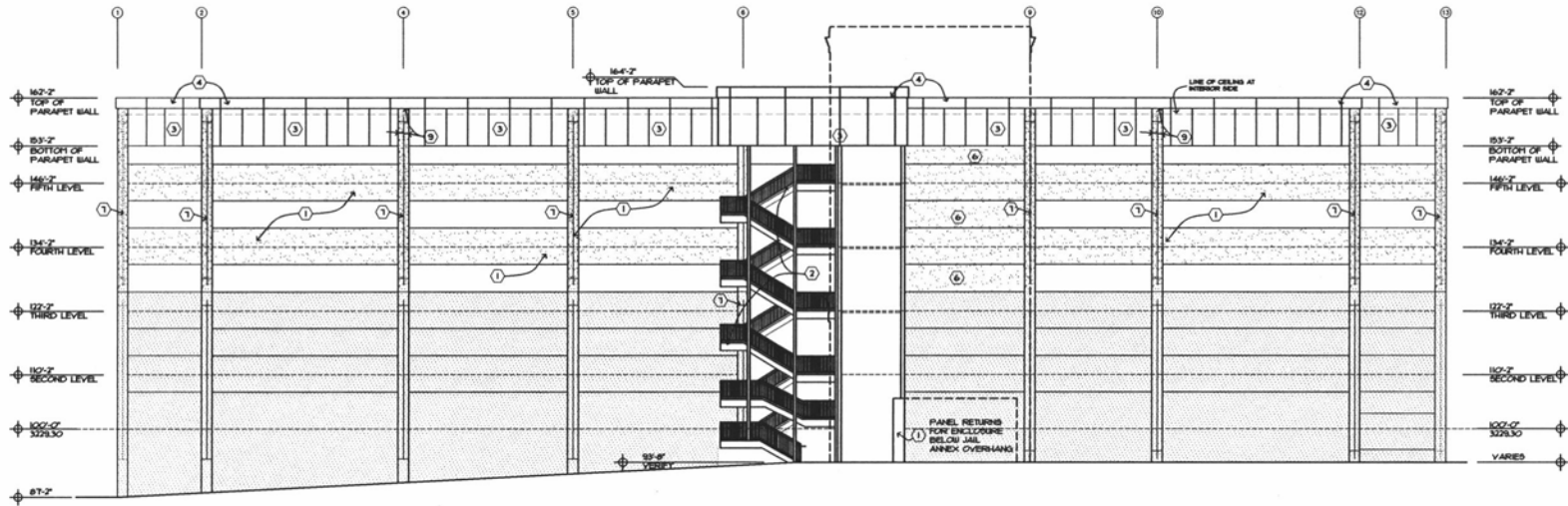
MECHANICAL/ELECTRICAL ENGINEER:
SKYLINE ENGINEERING, LLC.
415 12TH STREET
RAPID CITY, SD 57701
P. 605-737-3600

DATE: FEBRUARY 16, 2011
PROJECT MANAGER: CHRIS OLNEY
PROJECT NUMBER: 2010-027.1



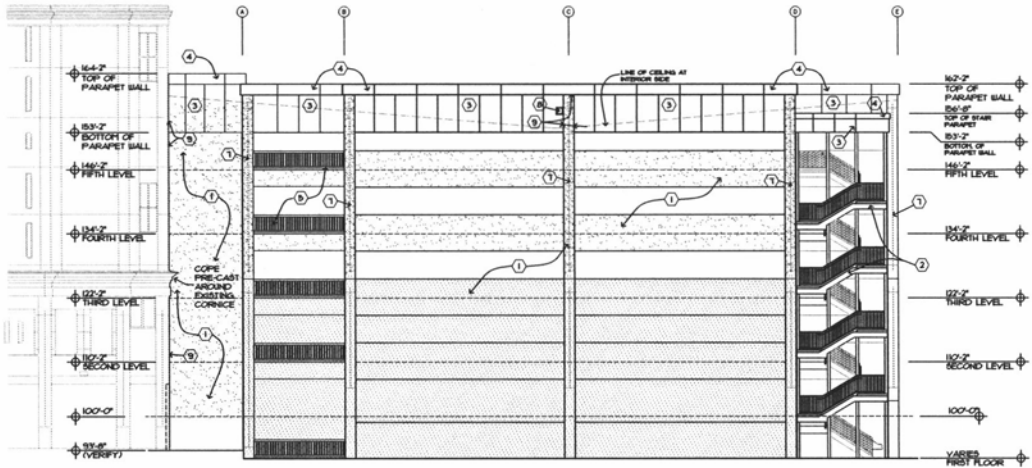
PENNINGTON COUNTY
CAMPUS EXPANSION
PARKING STRUCTURE ADDITION
RAPID CITY, SOUTH DAKOTA

EXTERIOR ELEVATIONS



1 WEST ELEVATION
A3.2 3/32"=1'-0"

- KEY NOTES**
- | | | |
|---|---|--------------------|
| 1 | PRE-CAST SPANDREL WALL PANELS AND COLUMNS. COORDINATE WITH STRUCTURAL DRAWINGS. | EXISTING STRUCTURE |
| 2 | STAIR TOWERS | |
| 3 | COMPOSITE METAL PANEL | |
| 4 | COMPOSITE METAL PANEL COPING. COORDINATE WITH BUILDING SECTION DETAILS | |
| 5 | PAINTED METAL GUARDRAILS. SEE 3/A3.1 | |
| 6 | PRE-CAST PANEL INSTALLED BETWEEN TWO SPANDREL PIECES | |
| 7 | PRE-CAST COLUMN REVEAL TO MATCH EXISTING REVEALS. SEE PHOTO 4/A3.1 | |
| 8 | 16"x12" THROUGH WALL SCOFFER | |
| 9 | BACKER ROD AND SEALANT. TYPICAL BETWEEN PRECAST AND COMPOSITE METAL PANEL. | |



2 SOUTH ELEVATION
A3.2 3/32"=1'-0"

ARCHITECTURAL TEAM:
ARC ARCHITECTURE INTERNATIONAL
Leo A Daly

PROJECT ARCHITECT:
 ARC INTERNATIONAL
 5808 SHERIDAN LAKE ROAD
 RAPID CITY, SD 57702
 P. 605-341-2066

STRUCTURAL ENGINEER:
 ALBERTSON ENGINEERING, INC.
 3302 WEST MAIN STREET C
 RAPID CITY, SD 57702
 P. 605-343-9406

MECHANICAL/ELECTRICAL ENGINEER:
 SKYLINE ENGINEERING, LLC.
 415 12TH STREET
 RAPID CITY, SD 57701
 P. 605-737-3600

DATE: FEBRUARY 16, 2011

PROJECT MANAGER: CHRIS OLNEY

PROJECT NUMBER: 2010-027.1

PENNINGTON COUNTY
CAMPUS EXPANSION
PARKING STRUCTURE ADDITION
 RAPID CITY, SOUTH DAKOTA

EXTERIOR ELEVATIONS

A3.2