

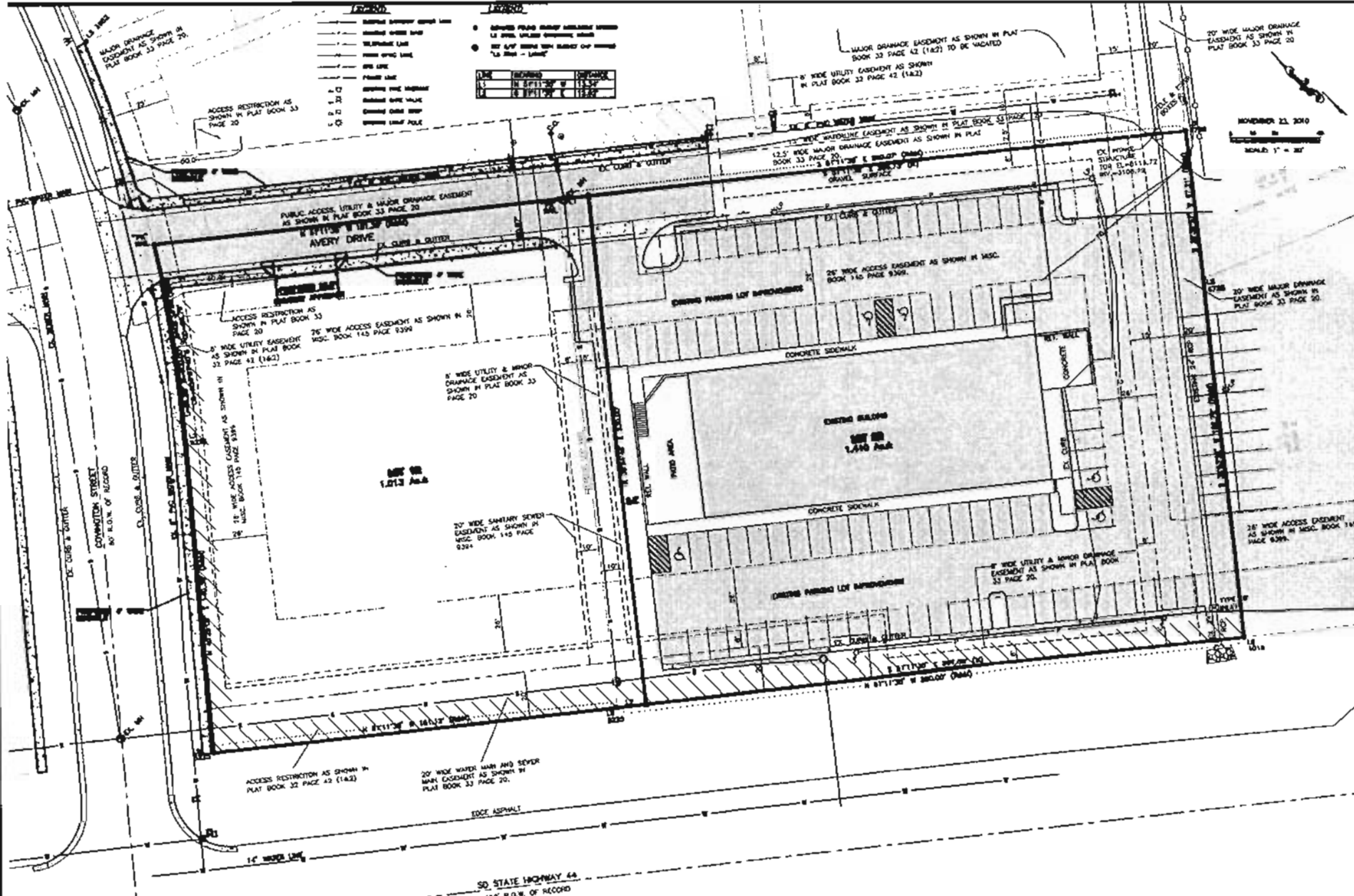
LEGEND

- EXISTING PROPERTY BOUNDARY LINE
- PROPOSED 6" WIDE LANE
- SEWERAGE LINE
- MAJOR DRAINAGE LINE
- WATER MAIN
- PROPOSED 20" DRAINAGE
- PROPOSED 24" DRAINAGE
- PROPOSED 30" DRAINAGE
- PROPOSED 36" DRAINAGE
- PROPOSED 42" DRAINAGE
- PROPOSED 48" DRAINAGE
- PROPOSED 54" DRAINAGE
- PROPOSED 60" DRAINAGE
- PROPOSED 66" DRAINAGE
- PROPOSED 72" DRAINAGE
- PROPOSED 78" DRAINAGE
- PROPOSED 84" DRAINAGE
- PROPOSED 90" DRAINAGE
- PROPOSED 96" DRAINAGE
- PROPOSED 102" DRAINAGE
- PROPOSED 108" DRAINAGE
- PROPOSED 114" DRAINAGE
- PROPOSED 120" DRAINAGE
- PROPOSED 126" DRAINAGE
- PROPOSED 132" DRAINAGE
- PROPOSED 138" DRAINAGE
- PROPOSED 144" DRAINAGE
- PROPOSED 150" DRAINAGE
- PROPOSED 156" DRAINAGE
- PROPOSED 162" DRAINAGE
- PROPOSED 168" DRAINAGE
- PROPOSED 174" DRAINAGE
- PROPOSED 180" DRAINAGE
- PROPOSED 186" DRAINAGE
- PROPOSED 192" DRAINAGE
- PROPOSED 198" DRAINAGE
- PROPOSED 204" DRAINAGE
- PROPOSED 210" DRAINAGE
- PROPOSED 216" DRAINAGE
- PROPOSED 222" DRAINAGE
- PROPOSED 228" DRAINAGE
- PROPOSED 234" DRAINAGE
- PROPOSED 240" DRAINAGE
- PROPOSED 246" DRAINAGE
- PROPOSED 252" DRAINAGE
- PROPOSED 258" DRAINAGE
- PROPOSED 264" DRAINAGE
- PROPOSED 270" DRAINAGE
- PROPOSED 276" DRAINAGE
- PROPOSED 282" DRAINAGE
- PROPOSED 288" DRAINAGE
- PROPOSED 294" DRAINAGE
- PROPOSED 300" DRAINAGE
- PROPOSED 306" DRAINAGE
- PROPOSED 312" DRAINAGE
- PROPOSED 318" DRAINAGE
- PROPOSED 324" DRAINAGE
- PROPOSED 330" DRAINAGE
- PROPOSED 336" DRAINAGE
- PROPOSED 342" DRAINAGE
- PROPOSED 348" DRAINAGE
- PROPOSED 354" DRAINAGE
- PROPOSED 360" DRAINAGE
- PROPOSED 366" DRAINAGE
- PROPOSED 372" DRAINAGE
- PROPOSED 378" DRAINAGE
- PROPOSED 384" DRAINAGE
- PROPOSED 390" DRAINAGE
- PROPOSED 396" DRAINAGE
- PROPOSED 402" DRAINAGE
- PROPOSED 408" DRAINAGE
- PROPOSED 414" DRAINAGE
- PROPOSED 420" DRAINAGE
- PROPOSED 426" DRAINAGE
- PROPOSED 432" DRAINAGE
- PROPOSED 438" DRAINAGE
- PROPOSED 444" DRAINAGE
- PROPOSED 450" DRAINAGE
- PROPOSED 456" DRAINAGE
- PROPOSED 462" DRAINAGE
- PROPOSED 468" DRAINAGE
- PROPOSED 474" DRAINAGE
- PROPOSED 480" DRAINAGE
- PROPOSED 486" DRAINAGE
- PROPOSED 492" DRAINAGE
- PROPOSED 498" DRAINAGE
- PROPOSED 504" DRAINAGE
- PROPOSED 510" DRAINAGE
- PROPOSED 516" DRAINAGE
- PROPOSED 522" DRAINAGE
- PROPOSED 528" DRAINAGE
- PROPOSED 534" DRAINAGE
- PROPOSED 540" DRAINAGE
- PROPOSED 546" DRAINAGE
- PROPOSED 552" DRAINAGE
- PROPOSED 558" DRAINAGE
- PROPOSED 564" DRAINAGE
- PROPOSED 570" DRAINAGE
- PROPOSED 576" DRAINAGE
- PROPOSED 582" DRAINAGE
- PROPOSED 588" DRAINAGE
- PROPOSED 594" DRAINAGE
- PROPOSED 600" DRAINAGE

LEGEND

- EXISTING MAJOR DRAINAGE
- EXISTING MINOR DRAINAGE
- EXISTING UTILITY
- EXISTING WATER MAIN
- EXISTING SEWER
- EXISTING SANITARY SEWER
- EXISTING WATER MAIN AND SEWER
- EXISTING WATER MAIN EASEMENT
- EXISTING SEWER EASEMENT
- EXISTING SANITARY SEWER EASEMENT
- EXISTING WATER MAIN AND SEWER EASEMENT

DATE	REVISED	DESCRIPTION
8/11/11	1	ISSUE
8/11/11	2	REVISION



NOVEMBER 23, 2010

SCALE: 1" = 30'

SPERLICH Consulting, Inc.

Professional Seal and Stamp

REGISTERED PROFESSIONAL ENGINEER

REGISTERED PROFESSIONAL SURVEYOR

REGISTERED PROFESSIONAL LAND SURVEYOR

REGISTERED PROFESSIONAL CIVIL ENGINEER

REGISTERED PROFESSIONAL ELECTRICAL ENGINEER

REGISTERED PROFESSIONAL MECHANICAL ENGINEER

REGISTERED PROFESSIONAL CHEMICAL ENGINEER

REGISTERED PROFESSIONAL INDUSTRIAL ENGINEER

REGISTERED PROFESSIONAL AERONAUTICAL ENGINEER

REGISTERED PROFESSIONAL AGRICULTURAL ENGINEER

REGISTERED PROFESSIONAL FORESTRY ENGINEER

REGISTERED PROFESSIONAL MINING ENGINEER

REGISTERED PROFESSIONAL METALLURGICAL ENGINEER

REGISTERED PROFESSIONAL NUCLEAR ENGINEER

REGISTERED PROFESSIONAL PETROLEUM ENGINEER

REGISTERED PROFESSIONAL THERMAL ENGINEER

REGISTERED PROFESSIONAL TRANSPORTATION ENGINEER

REGISTERED PROFESSIONAL WATER RESOURCES ENGINEER

REGISTERED PROFESSIONAL WIND ENGINEER

REGISTERED PROFESSIONAL BIOMECHANICAL ENGINEER

REGISTERED PROFESSIONAL BIOMEDICAL ENGINEER

REGISTERED PROFESSIONAL BIOMATERIALS ENGINEER

REGISTERED PROFESSIONAL BIOMEDICAL ELECTRONICS ENGINEER

REGISTERED PROFESSIONAL BIOMEDICAL INSTRUMENTATION ENGINEER

REGISTERED PROFESSIONAL BIOMEDICAL SYSTEMS ENGINEER

REGISTERED PROFESSIONAL BIOMEDICAL TECHNOLOGY ENGINEER

REGISTERED PROFESSIONAL BIOMEDICAL MANUFACTURING ENGINEER

REGISTERED PROFESSIONAL BIOMEDICAL RESEARCH ENGINEER

REGISTERED PROFESSIONAL BIOMEDICAL SAFETY ENGINEER

REGISTERED PROFESSIONAL BIOMEDICAL TRAINING ENGINEER

REGISTERED PROFESSIONAL BIOMEDICAL EVALUATION ENGINEER

REGISTERED PROFESSIONAL BIOMEDICAL QUALITY ENGINEER

REGISTERED PROFESSIONAL BIOMEDICAL COMPLIANCE ENGINEER

REGISTERED PROFESSIONAL BIOMEDICAL REGISTRATION ENGINEER

REGISTERED PROFESSIONAL BIOMEDICAL LEGAL ENGINEER

REGISTERED PROFESSIONAL BIOMEDICAL POLICY ENGINEER

REGISTERED PROFESSIONAL BIOMEDICAL ETHICS ENGINEER

REGISTERED PROFESSIONAL BIOMEDICAL HISTORY ENGINEER

REGISTERED PROFESSIONAL BIOMEDICAL PRESERVATION ENGINEER

REGISTERED PROFESSIONAL BIOMEDICAL RECONSTRUCTION ENGINEER

REGISTERED PROFESSIONAL BIOMEDICAL RESTORATION ENGINEER

REGISTERED PROFESSIONAL BIOMEDICAL MAINTENANCE ENGINEER

REGISTERED PROFESSIONAL BIOMEDICAL REPAIR ENGINEER

REGISTERED PROFESSIONAL BIOMEDICAL OVERHAUL ENGINEER

REGISTERED PROFESSIONAL BIOMEDICAL UPGRADE ENGINEER

REGISTERED PROFESSIONAL BIOMEDICAL MODERNIZATION ENGINEER

REGISTERED PROFESSIONAL BIOMEDICAL RENEWAL ENGINEER

REGISTERED PROFESSIONAL BIOMEDICAL REDEMPTION ENGINEER

REGISTERED PROFESSIONAL BIOMEDICAL REGENERATION ENGINEER

REGISTERED PROFESSIONAL BIOMEDICAL REPAIR ENGINEER

REGISTERED PROFESSIONAL BIOMEDICAL RECONSTRUCTION ENGINEER

REGISTERED PROFESSIONAL BIOMEDICAL RESTORATION ENGINEER

REGISTERED PROFESSIONAL BIOMEDICAL MAINTENANCE ENGINEER

REGISTERED PROFESSIONAL BIOMEDICAL REPAIR ENGINEER

REGISTERED PROFESSIONAL BIOMEDICAL OVERHAUL ENGINEER

REGISTERED PROFESSIONAL BIOMEDICAL UPGRADE ENGINEER

REGISTERED PROFESSIONAL BIOMEDICAL MODERNIZATION ENGINEER

REGISTERED PROFESSIONAL BIOMEDICAL RENEWAL ENGINEER

REGISTERED PROFESSIONAL BIOMEDICAL REDEMPTION ENGINEER

REGISTERED PROFESSIONAL BIOMEDICAL REGENERATION ENGINEER

REGISTERED PROFESSIONAL BIOMEDICAL REPAIR ENGINEER

REGISTERED PROFESSIONAL BIOMEDICAL RECONSTRUCTION ENGINEER

REGISTERED PROFESSIONAL BIOMEDICAL RESTORATION ENGINEER

REGISTERED PROFESSIONAL BIOMEDICAL MAINTENANCE ENGINEER

REGISTERED PROFESSIONAL BIOMEDICAL REPAIR ENGINEER

REGISTERED PROFESSIONAL BIOMEDICAL OVERHAUL ENGINEER

REGISTERED PROFESSIONAL BIOMEDICAL UPGRADE ENGINEER

REGISTERED PROFESSIONAL BIOMEDICAL MODERNIZATION ENGINEER

REGISTERED PROFESSIONAL BIOMEDICAL RENEWAL ENGINEER

REGISTERED PROFESSIONAL BIOMEDICAL REDEMPTION ENGINEER

REGISTERED PROFESSIONAL BIOMEDICAL REGENERATION ENGINEER



NO.	REVISION	DATE
1	ISSUE	8/11/11
2	REVISION	8/11/11

GENERAL NOTES

1. SEE PLAT

2. LOTS 11 & 26 OF LOT 8 OF BLOCK 16 TYPALCOO VILLAGE SUBDIVISION

3. SHEET 1/1