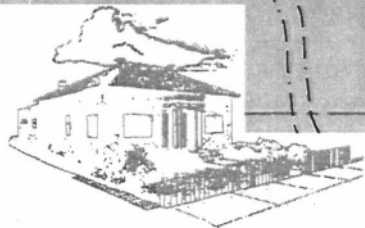
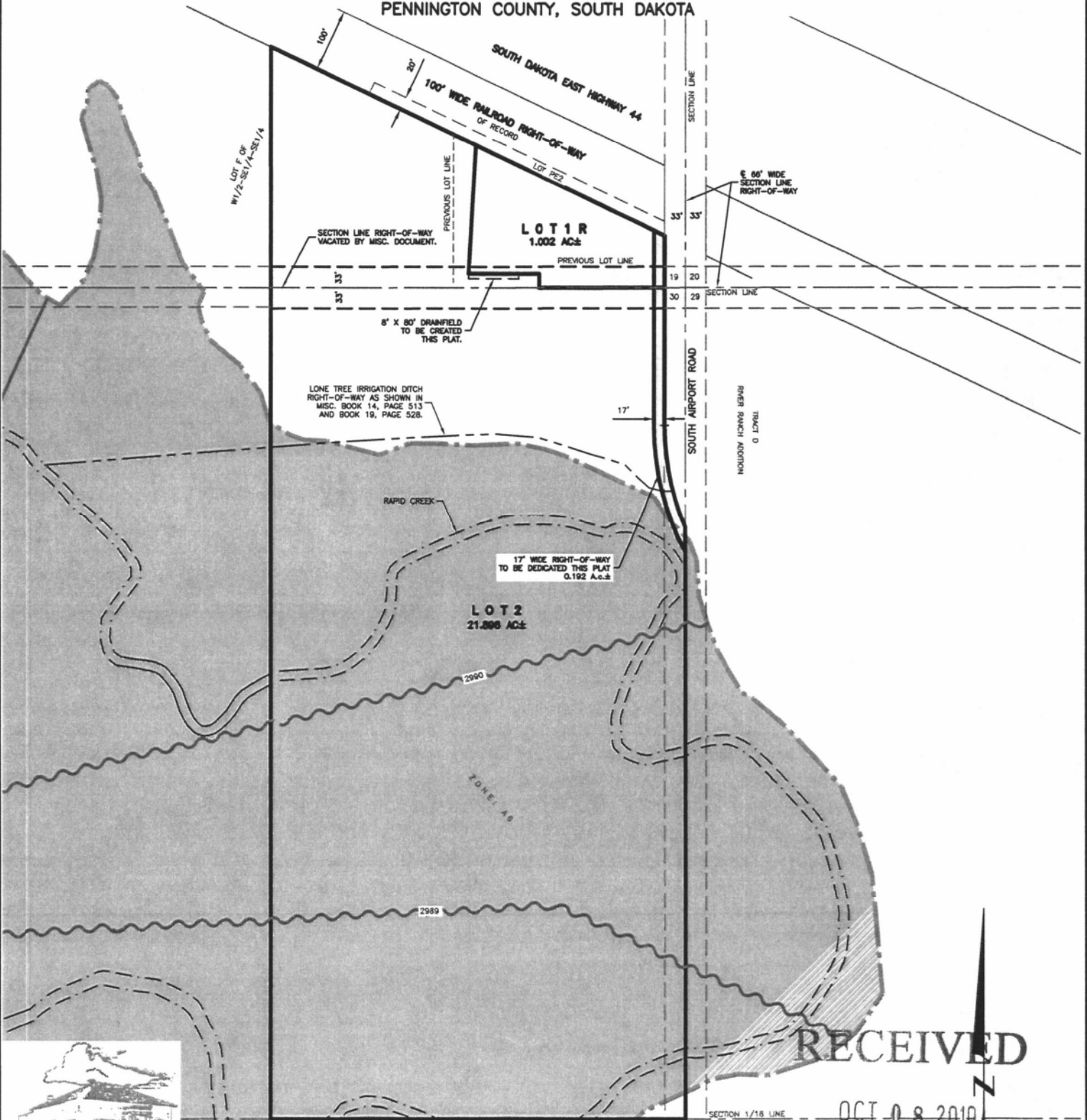


# PLAT OF LOTS 1R AND LOT 2 OF HEAVLIN NO. 2 ADDITION

(formerly Lot 1 of Heavlin No. 2 Addition, Portion of SE1/4 of the SE1/4 of the SE1/4 of Section 19 and the E1/2 of the NE1/4 of the NE1/4 of Section 30)

LOCATED IN THE SE1/4 OF THE SE1/4 OF SECTION 19 AND  
IN THE E1/2 OF THE NE1/4 OF THE NE1/4 OF SECTION 30

T1N, R9E, BHM,  
PENNINGTON COUNTY, SOUTH DAKOTA



RECEIVED

OCT 08 2010

**RENNER & ASSOCIATES, LLC.**

616 Sixth St. \* Rapid City, SD 57701 \* 605/721-7310  
FAX: 605/721-7313 \* E-MAIL: Gary@RennerAssoc.com  
\* Spearfish 605/717-0016 \*

Rapid City Growth  
Management Department  
N.I.S.

