

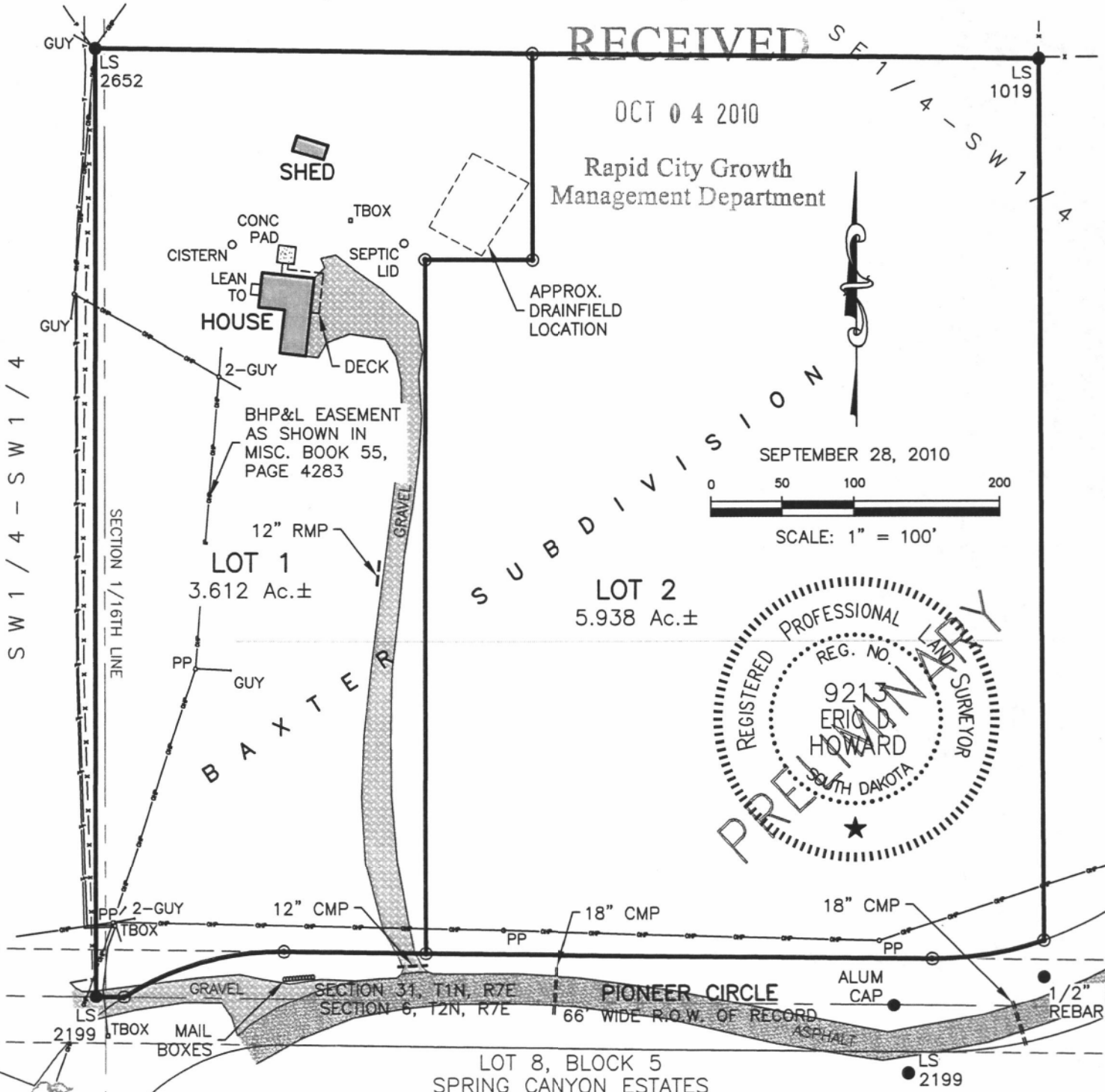
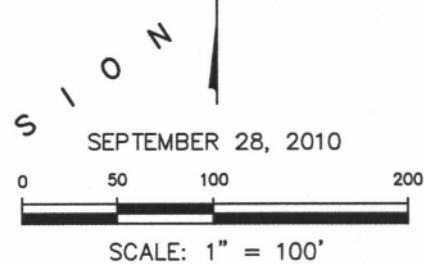
LOT 1 & 2, BAXTER SUBDIVISION

(formerly a Portion of the S1/2 of the SW1/4)
LOCATED IN SECTION 31, T1N, R7E, BHM
RAPID CITY, PENNINGTON COUNTY, SOUTH DAKOTA

RECEIVED

OCT 04 2010

Rapid City Growth
Management Department



RENNER & ASSOCIATES, LLC.

616 SIXTH ST. * RAPID CITY, SD 57701
PHONE: 605/721-7310 FAX: 605/721-7313
SPEARFISH OFFICE: 605/717-0016

