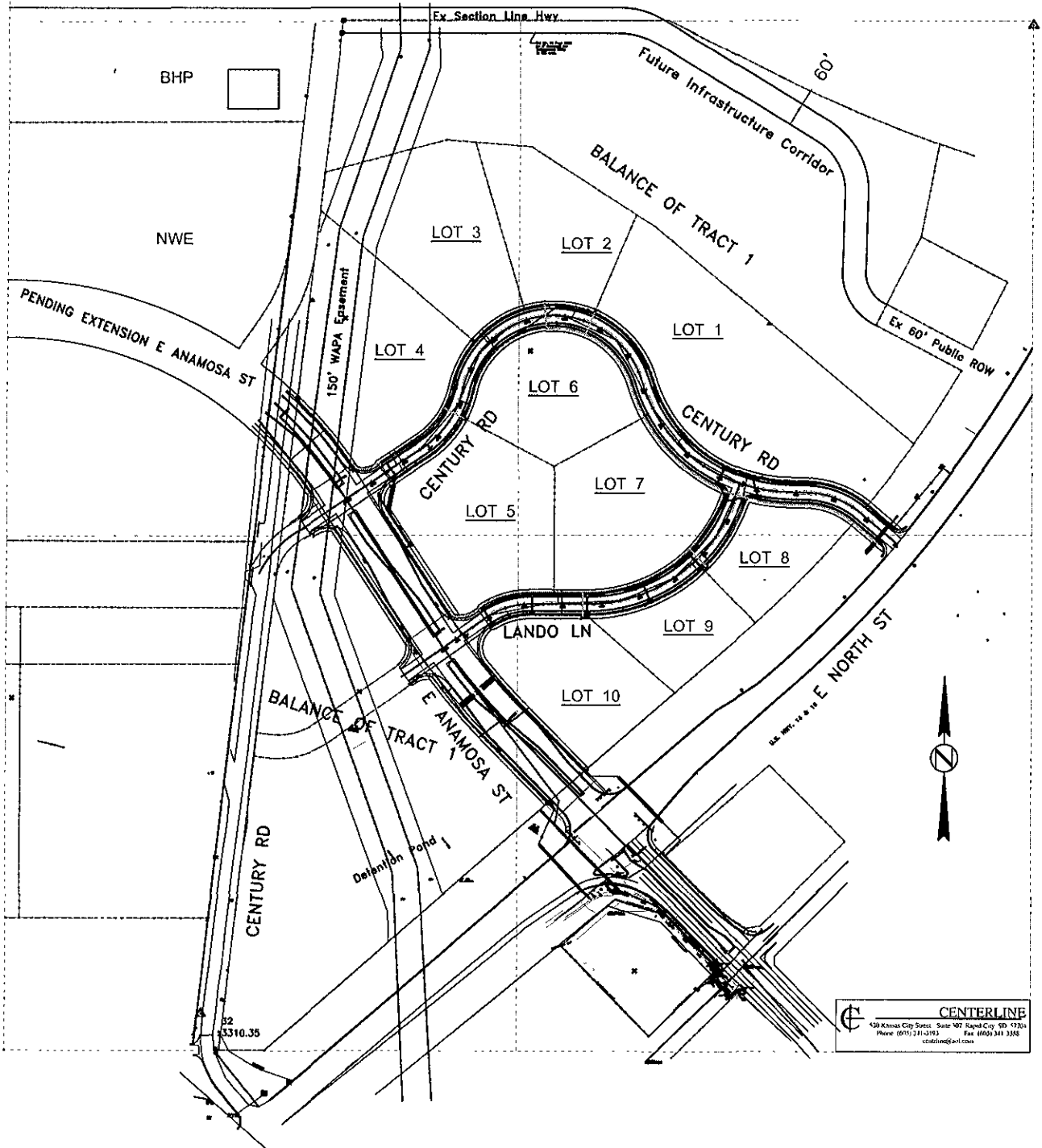
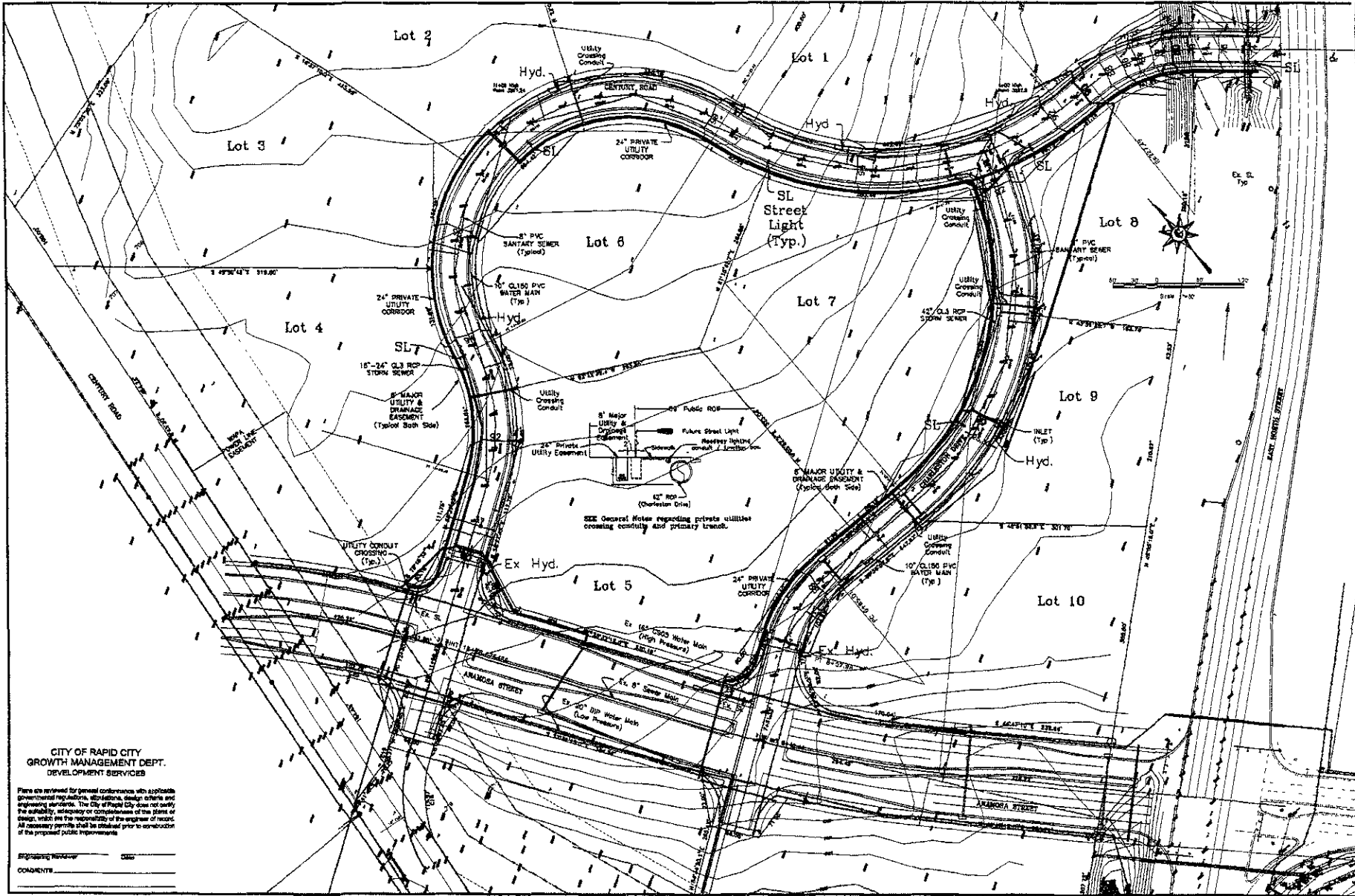


# ANAMOSA CROSSING SUBDIVISION

MASTER PLAN  
APRIL 2009



**CENTERLINE**  
429 Kinnel City Sites, Suite 401, Rapid City, SD 57701  
Phone (605) 331-3193 Fax (605) 341-3388  
centerline@a-1.com



CITY OF RAPID CITY  
GROWTH MANAGEMENT DEPT.  
DEVELOPMENT SERVICES

Please do not review for general compliance with applicable governmental regulations, restrictions, design criteria and engineering standards. The City of Rapid City does not warrant the suitability, adequacy or completeness of the plans or design, which are the responsibility of the engineer of record. All necessary permits shall be obtained prior to construction of the proposed public improvements.

Engineering Review: \_\_\_\_\_  
Comments: \_\_\_\_\_

**CENTERLINE**  
200 Kansas City Street Suite 307  
Rapid City, South Dakota 57701  
Phone: (605) 413-3137 Fax: (605) 341-1514  
www.centerlineinc.com

Anamosa Crossing  
Phase I

Utility Master Plan

|             |             |
|-------------|-------------|
| PROJECT NO. | 06_0393-Ph1 |
| FILE NO.    | 06001       |
| DESIGN BY   | LNK         |
| DRAWN BY    | MLB         |
| CHECKED BY  | LNK         |
| DATE        | 5/23/08     |