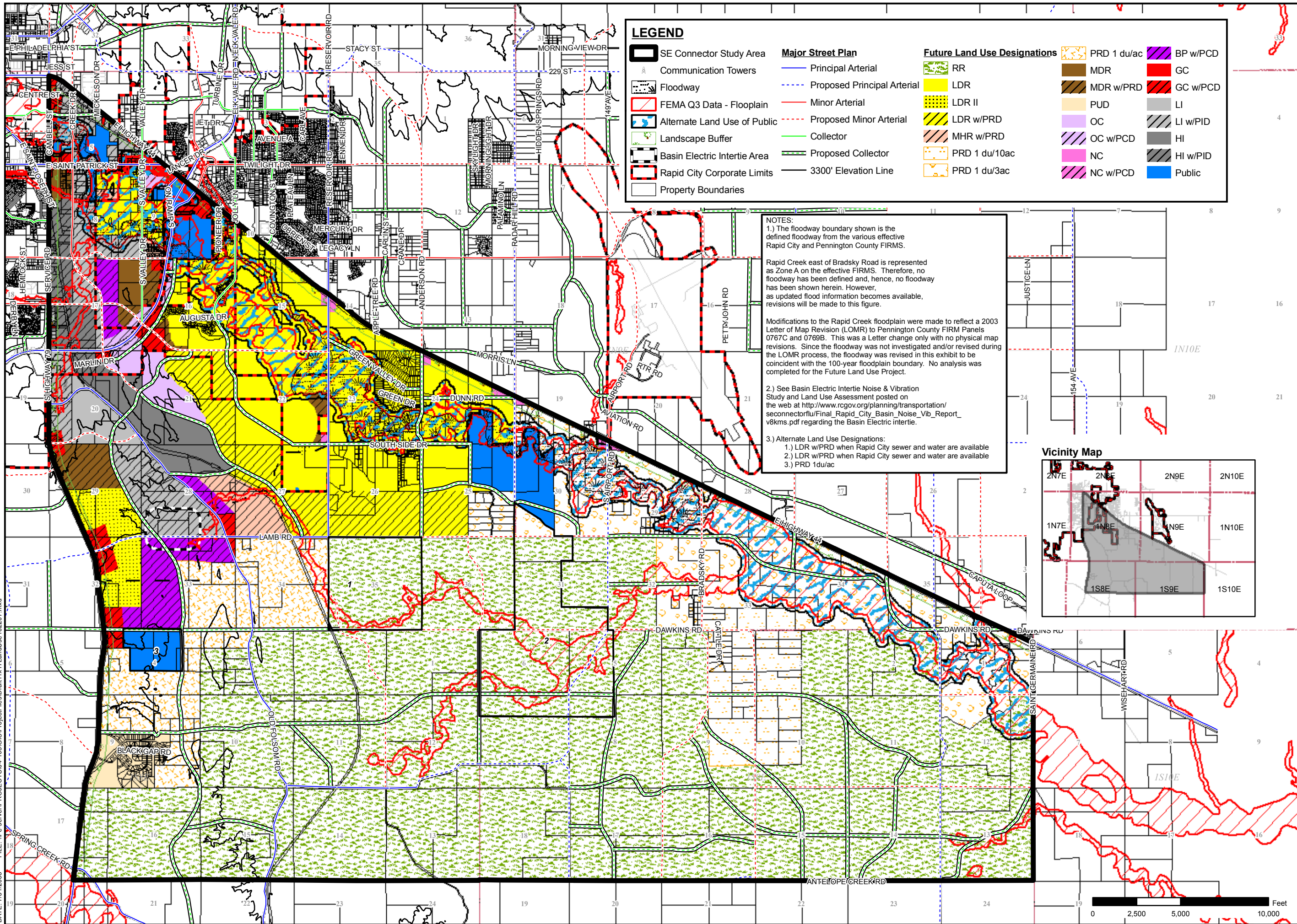


FILE: \\fe-server\PROJECTS\04-103\GIS\ProjectFiles\Draft11\17_LandUse_102207.mxd
DATE: 7/31/2008



LEGEND

SE Connector Study Area	Major Street Plan	Future Land Use Designations	RR	MDR	BP w/PCD
Communication Towers	Principal Arterial	LDR	LDR II	MDR w/PRD	GC
Floodway	Proposed Principal Arterial	LDR w/PRD	MHR w/PRD	PUD	GC w/PCD
FEMA Q3 Data - Floodplain	Minor Arterial	PRD 1 du/10ac	PRD 1 du/3ac	OC	LI
Alternate Land Use of Public	Proposed Minor Arterial	RR		OC w/PCD	LI w/PID
Landscape Buffer	Collector	RR		NC	HI
Basin Electric Intertie Area	Proposed Collector	RR		NC w/PCD	Public
Rapid City Corporate Limits	Proposed Collector	RR			
Property Boundaries	Proposed Collector	RR			
	3300' Elevation Line				

NOTES:

1.) The floodway boundary shown is the defined floodway from the various effective Rapid City and Pennington County FIRMS.

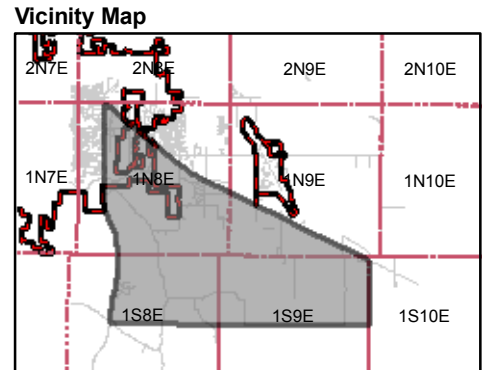
Rapid Creek east of Bradsky Road is represented as Zone A on the effective FIRMS. Therefore, no floodway has been defined and, hence, no floodway has been shown herein. However, as updated flood information becomes available, revisions will be made to this figure.

Modifications to the Rapid Creek floodplain were made to reflect a 2003 Letter of Map Revision (LOMR) to Pennington County FIRM Panels 0767C and 0769B. This was a Letter change only with no physical map revisions. Since the floodway was not investigated and/or revised during the LOMR process, the floodway was revised in this exhibit to be coincident with the 100-year floodplain boundary. No analysis was completed for the Future Land Use Project.

2.) See Basin Electric Intertie Noise & Vibration Study and Land Use Assessment posted on the web at http://www.rcgov.org/planning/transportation/seconnector/final_rapid_city_basin_noise_vib_report_v8kms.pdf regarding the Basin Electric intertie.

3.) Alternate Land Use Designations:

- 1.) LDR w/PRD when Rapid City sewer and water are available
- 2.) LDR w/PRD when Rapid City sewer and water are available
- 3.) PRD 1du/ac



Prepared For: **Rapid City, SD**

Prepared By: **Ferber Engineering Company, Inc.**
Civil Engineering • Water Resources • Transportation • Land Surveying
729 East Watertown St, Rapid City, SD 57701 • Phone: (605) 343-3311

SE CONNECTOR FUTURE LAND USE PLAN

RAPID CITY, SD

Sheet Title: **FIGURE 4. SE CONNECTOR FUTURE LAND USE PLAN**

Sheet: **6**

