



July 7, 2008

**SURVEYOR'S NOTES**

Utilities shown are from visual inspection, sketches provided by individual service providers and Utility Locates performed by South Dakota One Call. Ticket Number 072320283, 072320276, 072320287, & 072320286. The actual location of utilities and service lines may vary from the information shown hereon. We assume no liability for utilities and services that are not marked or are inaccurately defined by utility locators.

# PRELIMINARY

**Fisk Land Surveying & Consulting Engineers, Inc.**  
 10040 S. 15th Street, Rapid City, SD 57705  
 (605) 343-1112 (fax)  
 (605) 343-1336 (cell) (605) 343-1112 (cell)  
 www.fisklandsurveying.com

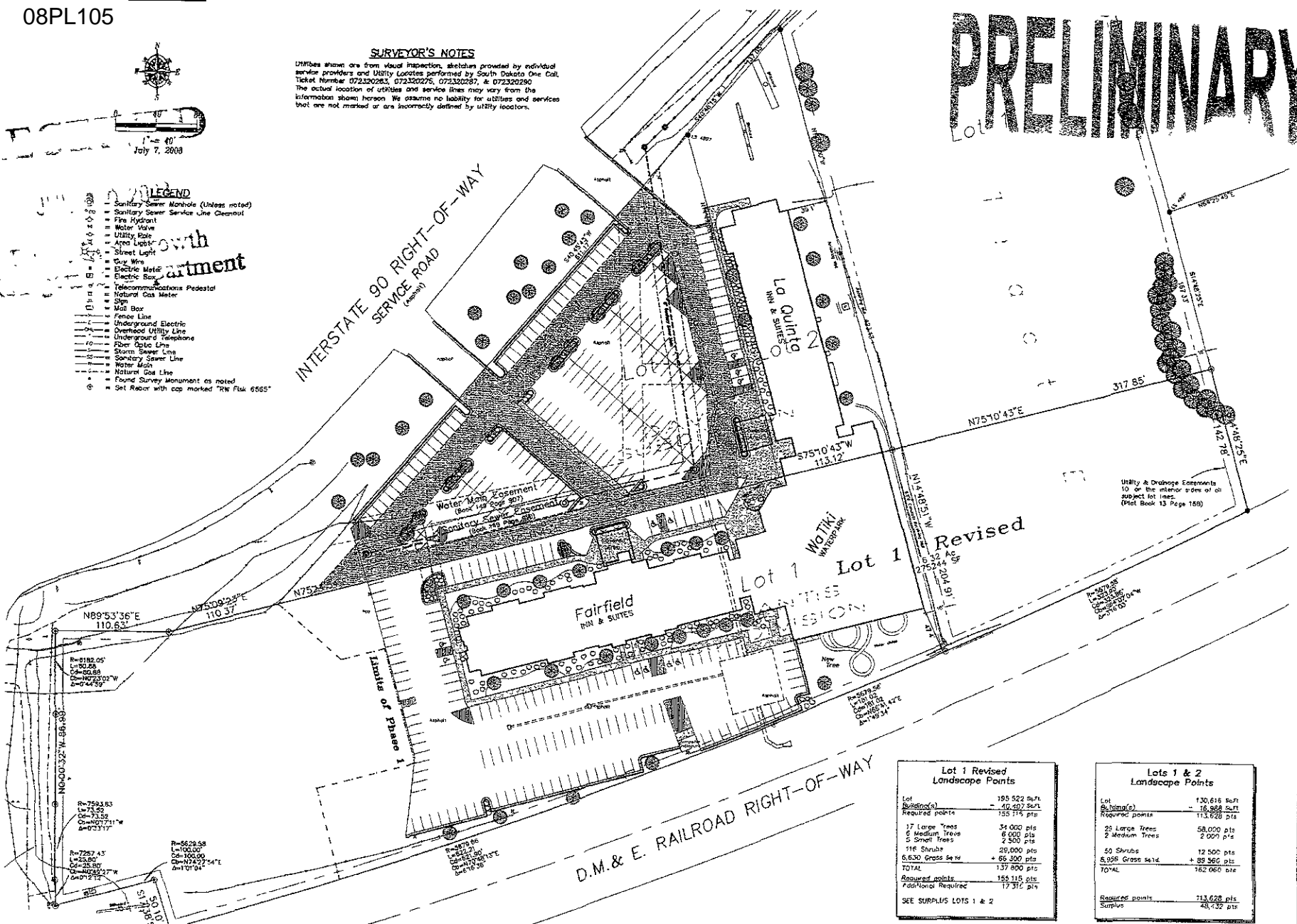
**LEGEND**

- Sanitary Sewer Manhole (Unless noted)
- Sanitary Sewer Service Line Cleanout
- Fire Hydrant
- Water Valve
- Utility Pole
- Street Light
- Guy Wire
- Electric Meter
- Electric Service Entrance
- Telecommunications Pedestal
- Natural Gas Meter
- Sign
- Mail Box
- Fence Line
- Underground Electric
- Overhead Utility Line
- Underground Telephone
- Fiber Optic Line
- Storm Sewer Line
- Sanitary Sewer Line
- Water Main
- Natural Gas Line
- Found Survey Monument as noted
- Set Back with cap marked "W Flak 6565"

South  
 Apartment

INTERSTATE 90 RIGHT-OF-WAY  
 SERVICE ROAD  
 (As noted)

D.M. & E. RAILROAD RIGHT-OF-WAY



Utility & Drainage Easements  
 10' on the interior sides of all  
 subject lot lines.  
 (Plot Book 13 Page 158)

Lot	195 522 sqft
Buildings	- 10 000 sqft
Required points	135 775 pts
17 Large Trees	34 000 pts
6 Medium Trees	6 000 pts
5 Small Trees	2 500 pts
116 Shrubs	28 000 pts
6,630 Grass Seed	+ 66 300 pts
TOTAL	137 800 pts
Required points	155 115 pts
Additional Required	17 315 pts

SEE SURPLUS LOTS 1 & 2

Lot	130,616 sqft
Buildings	- 16,998 sqft
Required points	113,628 pts
20 Large Trees	58,000 pts
2 Medium Trees	2,000 pts
50 Shrubs	12,500 pts
5,998 Grass Seed	+ 89,562 pts
TOTAL	162,060 pts
Required points	113,628 pts
Surplus	48,432 pts

The information herein is a computer generated plot and results to the data, shall not be construed as a warranty or guarantee of any kind for any other purpose or any other error or omission.

Site Plan  
 Proposed Lot 1 Revised  
 of Atlantis Subdivision  
 Section 27, T2N, R8E, B.H.M.  
 Rapid City, Pennington County, South Dakota

Surveyed by M.L.B.  
 Date 9/11/07  
 Drawn by RWF/BL  
 Date 7/7/08  
 Checked by RWF  
 Revisions  
 Project No. 07-09-04  
 Site Plan