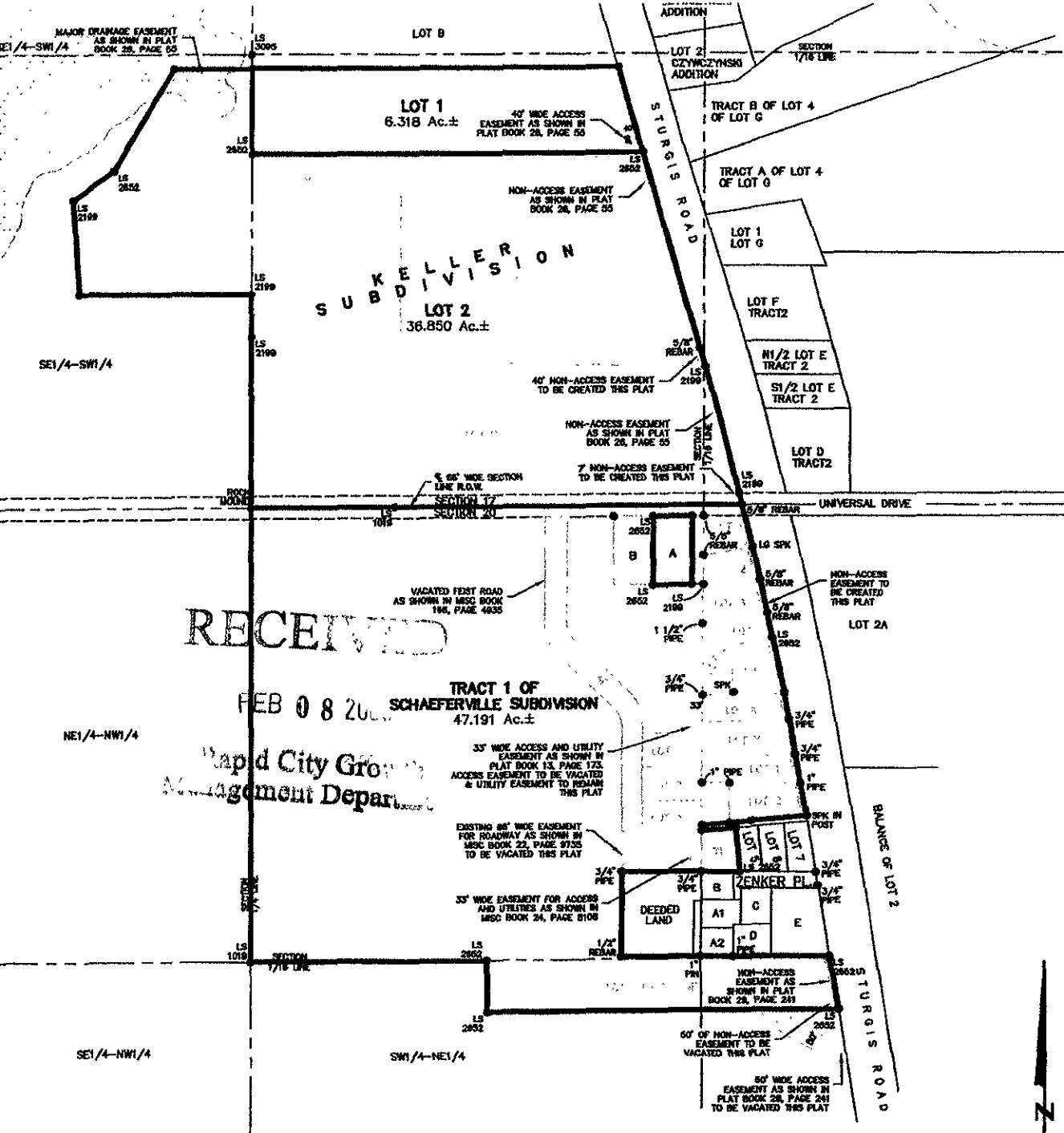


# LOTS 1-2 OF KELLER SUBDIVISION & TRACT 1 OF SCHAEFERVILLE SUBDIVISION

(formerly the Balance of the NW1/4 of the NE1/4; Lot 1 of Limestone Tunnel Subdivision; Lot B of the NW1/4 of the NE1/4; Lots 1-3 of Block 1 and Vacated Feist Road of Feist Addition; Lots 1-4 of Lot 1 of the NE1/4 of the NE1/4; Lot A, Lots 1-6 of Lot B, and a Subdivision of Lot 1C; Lot X and Y, a Subdivision of Lot 1D; Lots A, B, and C of Keller Subdivision)  
LOCATED IN S1/2 OF SE1/4 & IN THE SE1/4 OF THE SW1/4 OF SECTION 17 & NE1/4 OF SECTION 20, T2N, R7E, BHM  
PENNINGTON COUNTY, SOUTH DAKOTA



RECEIVED

FEB 08 2008

Rapid City Growth Management Department

## Renner & Associates, LLC.

FEBRUARY 8, 2008  
SCALE: NTS

616 Sixth St. \* Rapid City, SD 57701 \* 605/721-7310

FAX: 605/721-7313 \* E-MAIL: Gary@RennerAssoc.com



CITY HALL 1903