

08SR027



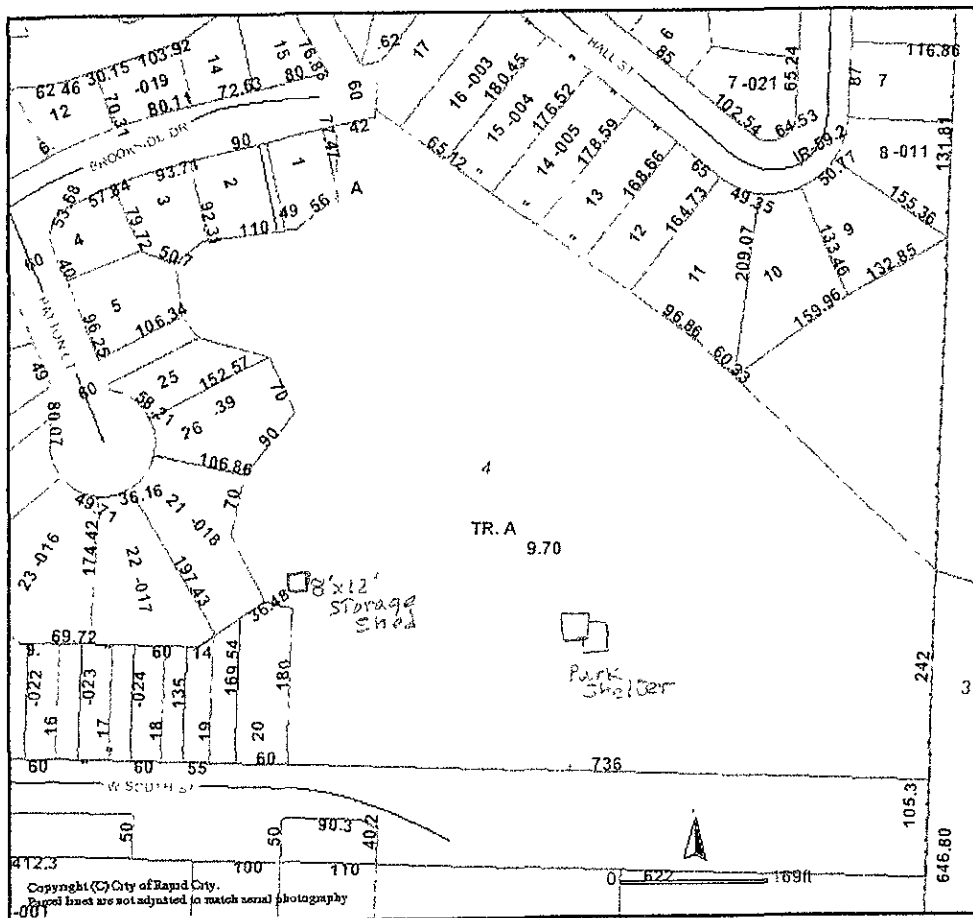
Location of  
Storage Shed

Placement will be approximately  
187' North of south property line and  
37' East of the west property line.



08SR027

# Kiwanis-Mary Hall Park



Print Close

- ROADWAY
- PARKWAY
- ALLEYWAY
- COUNTY HIGHWAY
- STATE HIGHWAY
- INTERSTATE
- RAILROAD
- UTILITY LINE
- WATER LINE
- SEWER LINE
- GAS LINE
- TELEPHONE LINE
- ELECTRIC LINE
- CABLE TV LINE
- FENCING
- BOUNDARY
- TOWNSHIP
- COUNTY
- STATE
- NATIONAL
- CITY
- PRECINCT
- BLOCK
- PARCEL
- SECTION
- TOWNSHIP
- COUNTY
- STATE
- NATIONAL
- CITY
- PRECINCT
- BLOCK
- PARCEL

**DISCLAIMER**  
 This GIS data is provided as is, without warranty or any representation of accuracy, timeliness or completeness. The burden for determining accuracy, completeness, timeliness, merchantability and fitness, or the appropriateness for use rests solely on the requester. Rapid City and Pennington County make no warranties, express or implied, as to the use of the data. The implied warranties of merchantability or fitness for a particular purpose are specifically disclaimed. The requester acknowledges and accepts the limitations of the data, including the fact that the data is dynamic and is in a constant state of maintenance, correction and update. This document does not represent a legal survey of the land. There are no restrictions on distribution of printed Rapid City/Pennington County maps, other than the City or Rapid City copyright notice be legible on the print. The User agrees to recognize and honor the copyrights and other proprietary claims for the GIS Product File(s) established or produced by the City of Rapid City or the vendors furnishing said items to the City of Rapid City.

Copyright (C) City of Rapid City.  
 Aerial lines are not adjusted to match aerial photography.



242  
 105.3  
 646.80