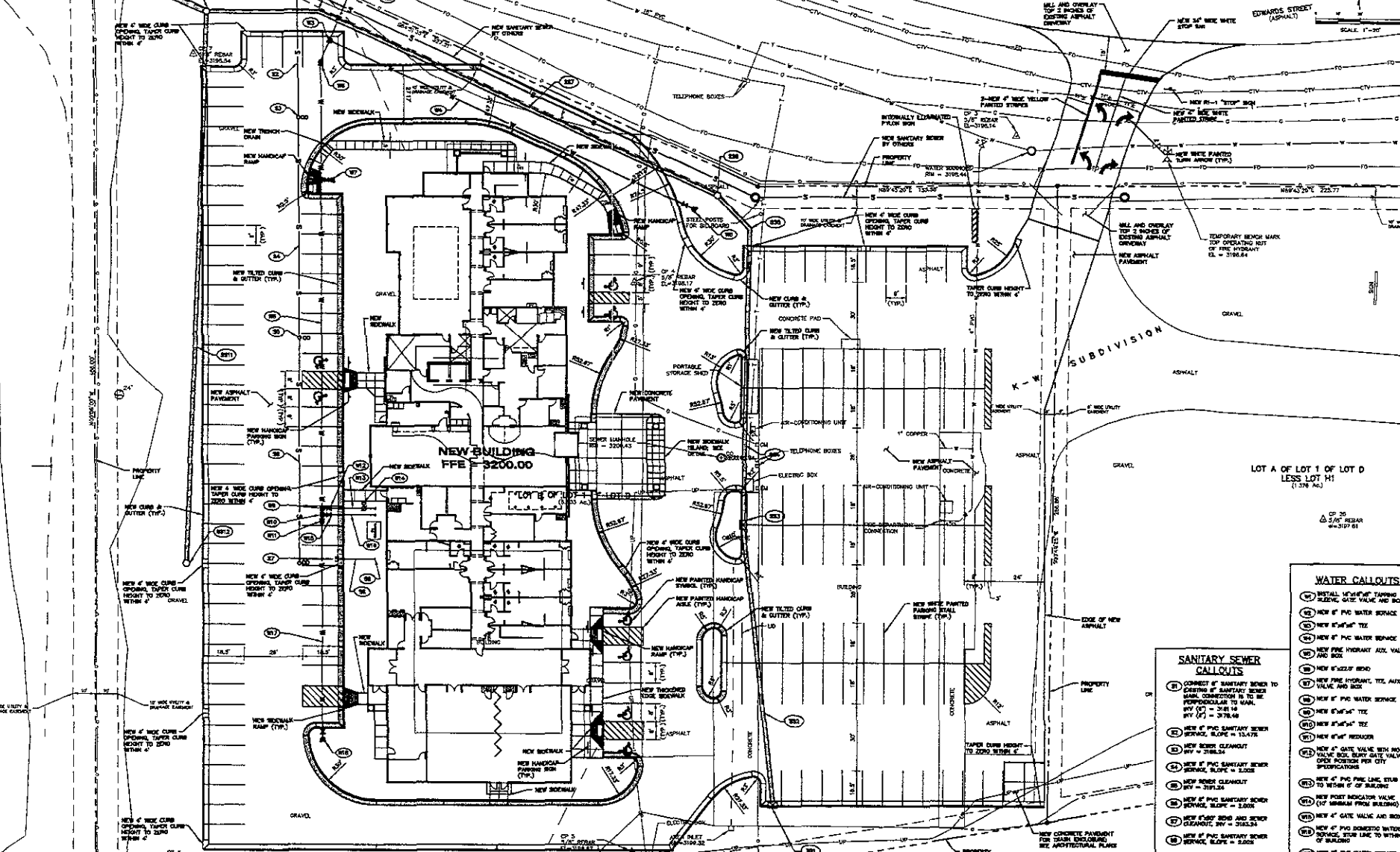


08PD018

(81) NEW TYPE B INLET FL = 3182.10	(84) 12" OF NEW 12" RCP STORM SEWER SLOPE = 1.50%	(87) 24" OF NEW 12" RCP STORM SEWER SLOPE = 1.50%	(90) 24" OF NEW 12" RCP STORM SEWER SLOPE = 1.50%
(82) 12" OF 12" RCP STORM SEWER SLOPE = 1.50%	(85) NEW 12" TYP. 200' INLET FL = 3182.00	(88) NEW 12" TYP. 200' INLET FL (12") IN = 3182.00 FL (12") OUT = 3182.00	(91) 24" OF NEW 12" RCP STORM SEWER SLOPE = 1.50%
(83) NEW TYPE B INLET FL = 3182.00	(86) NEW TYPE 400' INLET FL = 3182.00 FL (12") IN = 3182.00 FL (12") OUT = 3182.00	(89) NEW TYPE 400' INLET FL = 3182.00 FL (12") IN = 3182.00 FL (12") OUT = 3182.00	(92) NEW TYPE 200' INLET FL = 3182.00



WATER CALLOUTS

- (99) INSTALL 4" NEW 12" STURROV PLEVIC GATE VALVE AND BOX
- (100) NEW 4" PVC WATER SERVICE
- (101) NEW 4" x 4" x 4" TEE
- (102) NEW 4" PVC WATER SERVICE
- (103) NEW FINE HYDRANT AUX. VALVE AND BOX
- (104) NEW 4" x 2 1/2" BEND
- (105) NEW FINE HYDRANT, TEE, AUX. VALVE AND BOX
- (106) NEW 4" PVC WATER SERVICE
- (107) NEW 4" x 4" x 4" TEE
- (108) NEW 4" x 4" x 4" TEE
- (109) NEW 4" x 4" x 4" TEE
- (110) NEW 4" x 4" x 4" TEE
- (111) NEW 4" x 4" x 4" REDUCER
- (112) NEW 4" GATE VALVE WITH NO. VALVE BOX, BURST GATE VALVE IN OPEN POSITION PER CITY SPECIFICATIONS
- (113) NEW 4" PVC FIRE LINE, 200' IN. TO SIGN, SEE SIGN
- (114) NEW FINE HYDRANT VALVE (17' MINIMUM FROM BUILDING)
- (115) NEW 4" GATE VALVE AND BOX
- (116) NEW 4" PVC DOMESTIC WATER SERVICE, SEE SIGN
- (117) NEW 4" PVC WATER SERVICE
- (118) NEW FINE HYDRANT AUX. VALVE AND BOX

SANITARY SEWER CALLOUTS

- (93) CONNECT 4" SANITARY SEWER TO EXISTING 4" SANITARY SEWER MAIN, CONNECTION IS TO BE TYPICALLY TO MAIN, INV. (1) = 3181.50 INV. (2) = 3178.50
- (94) NEW 4" PVC SANITARY SEWER SERVICE, SLOPE = 1.50%
- (95) NEW 200' CLEANOUT INV = 3182.00
- (96) NEW 4" PVC SANITARY SEWER SERVICE, SLOPE = 1.50%
- (97) NEW 200' CLEANOUT INV = 3182.00
- (98) NEW 4" PVC SANITARY SEWER SERVICE, SLOPE = 1.50%
- (99) NEW 4" PVC WATER SERVICE
- (100) NEW FINE HYDRANT AUX. VALVE AND BOX

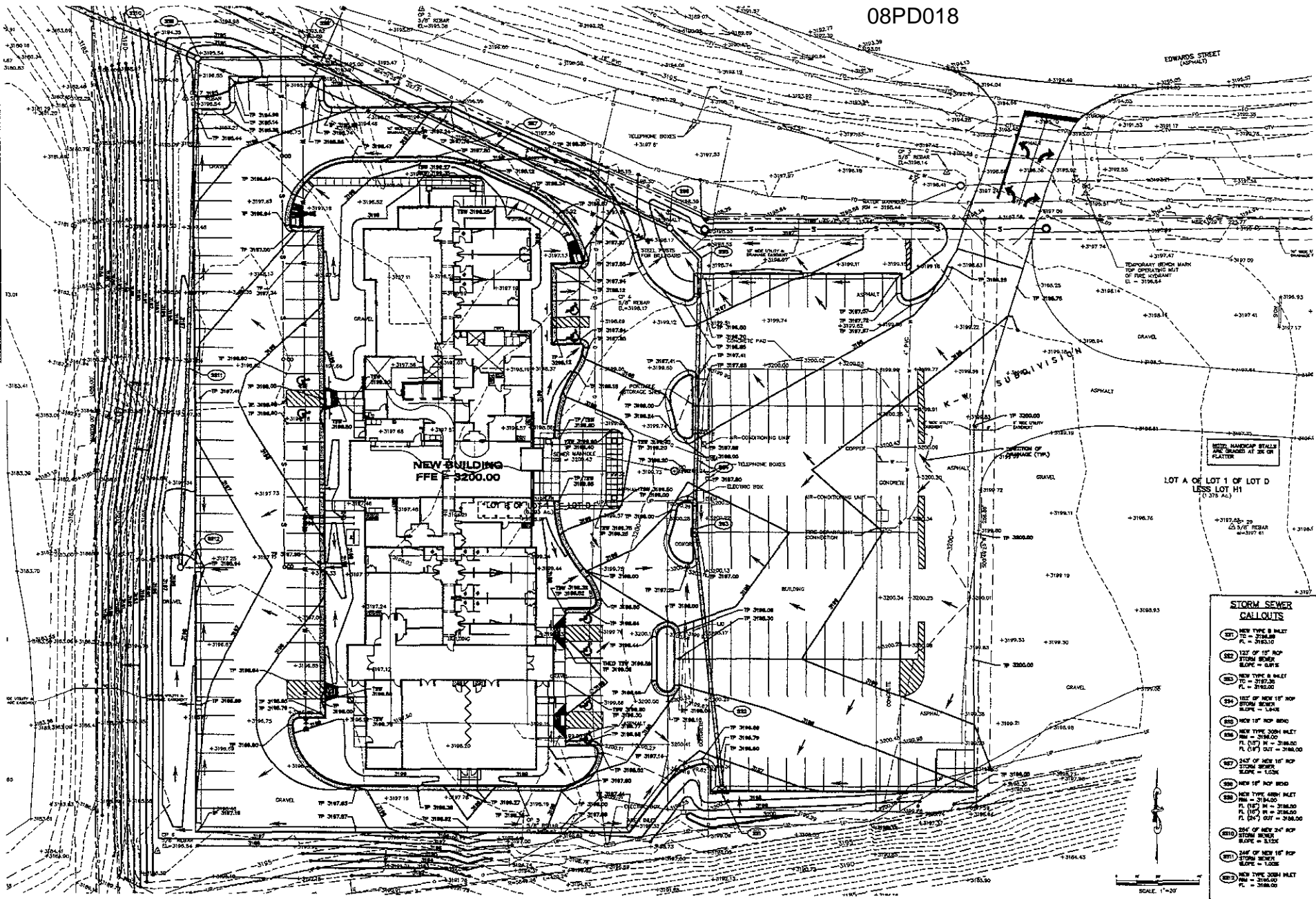
FMG, Inc.
 3700 Bluffs Road
 Rapid City, SD 57705-0317
 (605) 342-1221
 www.fmginc.com

NOT FOR CONSTRUCTION

The Number: 8838
 Location: SE 1/4 SECTION 28, T24N, R102E
 Drawn By: JG
 Checked By: JG
 Date: SEPTEMBER 2002
 Designed By: JG
 Drawn By: JG/2/2/02
 Checked By: JG

**FINAL PLANNED DEVELOPMENT PLAN
 COMFORT SUITES
 RAPID CITY, SD**

Revision / Date
 Sheet Name:
PARKING LAYOUT PLAN
 Sheet Number:
C4 of C8



NEW BUILDING
FFE = \$200.00

TEMPORARY BENCH MARK
TOP GRAVELLY MUD OF FIRE KICKMART
E = 3196.64

LOT A OF LOT 1 OF LOT D
LESS LOT H1
(1.375 AC.)

STORM SEWER CALLOUTS

- ① NEW 12" 8' SILENT
P.C. = 3183.00
P.L. = 3183.00
- ② 1/2" OF 18" HOP
STONE SEWER
SLOPE = 0.1%
- ③ NEW 12" 8' SILENT
P.C. = 3182.00
P.L. = 3182.00
- ④ NEW 12" HOP
STONE SEWER
SLOPE = 1.4%
- ⑤ NEW 12" HOP
STONE SEWER
SLOPE = 0.1%
- ⑥ NEW 12" HOP
STONE SEWER
SLOPE = 0.1%
- ⑦ 1/2" OF NEW 18" HOP
STONE SEWER
SLOPE = 1.0%
- ⑧ NEW 12" HOP
STONE SEWER
SLOPE = 0.1%
- ⑨ NEW 12" HOP
STONE SEWER
SLOPE = 0.1%
- ⑩ NEW 12" HOP
STONE SEWER
SLOPE = 0.1%
- ⑪ 1/2" OF NEW 18" HOP
STONE SEWER
SLOPE = 1.0%
- ⑫ NEW 12" HOP
STONE SEWER
SLOPE = 0.1%

FMG, Inc.
2700 Grange Road
Rapid City, SD 57703-0117
(605) 342-4105 FAX (605) 342-4222
www.fmg-engineering.com

NOT FOR CONSTRUCTION

File Number	2538
Location	LOT 1/2, SECTION 28, T24, R5E, 20E
Surveyed by	MM/07
Date	SEPTEMBER 2005
Designed by	SC
Drawn by	SK/UK/RS
Checked by	

**FINAL PLANNED DEVELOPMENT PLAN
COMFORT SUITES
RAPID CITY, SD**

Revision / Date	
Sheet Name	
PARKING GRADING PLAN	
Sheet Number	
C6 of C8	

SCALE: 1"=20'