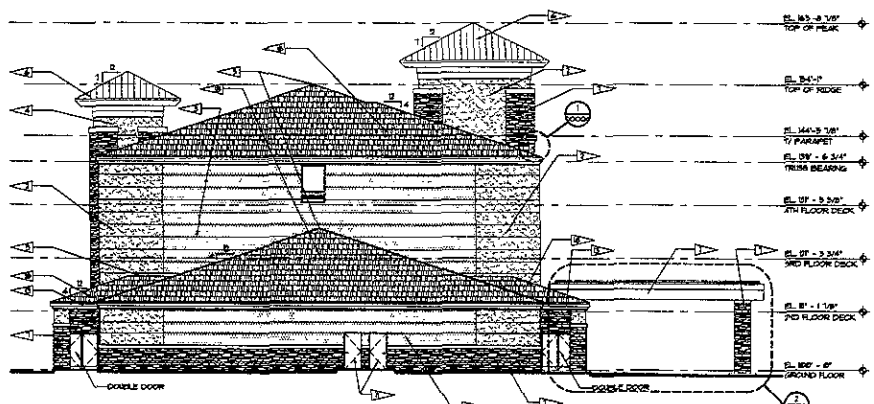




EAST ELEVATION
SCALE: 3/32" = 1'-0"



SOUTH ELEVATION
SCALE: 3/32" = 1'-0"

| EXTERIOR FINISH SCHEDULE | | | | | NOTES FROM MATERIAL NOTES | |
|--------------------------|----------------------|---------|---|--|---------------------------|--|
| FIELD ELEMENT | MATERIAL | FINISH | COLOR | NOTES FROM MATERIAL NOTES | GRAPHIC SCHEDULE | PALETTE I |
| WELDCOURN | STEEL / STEEL JOINER | WELDED | SEE GRAPHIC SCHEDULE | A) EIFS, TEXTURES AS MANUFACTURED BY SUPPLIER | [Symbol] | EIFS COLOR - A COLOR: CHALK WHITE FINISH: SANDPAPER FINE |
| ROOFING | ASPHALT / SHINGLES | PRE-FIN | COLONIAL BLACK | B) EIFS, COLOR BY DUNN PRODUCTIONS COLOR PALETTE | [Symbol] | EIFS COLOR - B COLOR: GOLD FINISH: SANDPAPER |
| ROOFING | DETAIL | PRE-FIN | COLONIAL RED | C) SINGLE WORKING TO BE FROM THE CHALET DESIGNER SERIES BY THE AIA/IBR ROOFING CORPORATION | [Symbol] | EIFS COLOR - C COLOR: BRIGHT YELLOW |
| WALLS | ALUMINUM | PRE-FIN | HATCH ADJACENT MATERIAL COLOR TO MATCH EIFS 'A' | D) EIFS GUTTER IS INTEGRAL TO WINDOW FRAME | [Symbol] | EIFS COLOR - D COLOR: BROWN FINISH: SANDPAPER |
| WALLS | ALUMINUM | PRE-FIN | HATCH ADJACENT MATERIAL COLOR TO MATCH EIFS 'A' | E) EIFS ROOF BY INTERTECH ALUMINUM CORPORATION OR EQUAL | [Symbol] | EIFS COLOR - E COLOR: BROWN FINISH: SANDPAPER |
| WALLS | ALUMINUM | PRE-FIN | HATCH ADJACENT MATERIAL COLOR TO MATCH EIFS 'A' | | [Symbol] | EIFS COLOR - F COLOR: BROWN FINISH: SANDPAPER |
| WALLS | ALUMINUM | PRE-FIN | HATCH ADJACENT MATERIAL COLOR TO MATCH EIFS 'A' | | [Symbol] | EIFS COLOR - G COLOR: BROWN FINISH: SANDPAPER |
| WALLS | ALUMINUM | PRE-FIN | HATCH ADJACENT MATERIAL COLOR TO MATCH EIFS 'A' | | [Symbol] | EIFS COLOR - H COLOR: BROWN FINISH: SANDPAPER |
| WALLS | ALUMINUM | PRE-FIN | HATCH ADJACENT MATERIAL COLOR TO MATCH EIFS 'A' | | [Symbol] | EIFS COLOR - I COLOR: BROWN FINISH: SANDPAPER |
| WALLS | ALUMINUM | PRE-FIN | HATCH ADJACENT MATERIAL COLOR TO MATCH EIFS 'A' | | [Symbol] | EIFS COLOR - J COLOR: BROWN FINISH: SANDPAPER |
| WALLS | ALUMINUM | PRE-FIN | HATCH ADJACENT MATERIAL COLOR TO MATCH EIFS 'A' | | [Symbol] | EIFS COLOR - K COLOR: BROWN FINISH: SANDPAPER |
| WALLS | ALUMINUM | PRE-FIN | HATCH ADJACENT MATERIAL COLOR TO MATCH EIFS 'A' | | [Symbol] | EIFS COLOR - L COLOR: BROWN FINISH: SANDPAPER |
| WALLS | ALUMINUM | PRE-FIN | HATCH ADJACENT MATERIAL COLOR TO MATCH EIFS 'A' | | [Symbol] | EIFS COLOR - M COLOR: BROWN FINISH: SANDPAPER |
| WALLS | ALUMINUM | PRE-FIN | HATCH ADJACENT MATERIAL COLOR TO MATCH EIFS 'A' | | [Symbol] | EIFS COLOR - N COLOR: BROWN FINISH: SANDPAPER |
| WALLS | ALUMINUM | PRE-FIN | HATCH ADJACENT MATERIAL COLOR TO MATCH EIFS 'A' | | [Symbol] | EIFS COLOR - O COLOR: BROWN FINISH: SANDPAPER |
| WALLS | ALUMINUM | PRE-FIN | HATCH ADJACENT MATERIAL COLOR TO MATCH EIFS 'A' | | [Symbol] | EIFS COLOR - P COLOR: BROWN FINISH: SANDPAPER |
| WALLS | ALUMINUM | PRE-FIN | HATCH ADJACENT MATERIAL COLOR TO MATCH EIFS 'A' | | [Symbol] | EIFS COLOR - Q COLOR: BROWN FINISH: SANDPAPER |
| WALLS | ALUMINUM | PRE-FIN | HATCH ADJACENT MATERIAL COLOR TO MATCH EIFS 'A' | | [Symbol] | EIFS COLOR - R COLOR: BROWN FINISH: SANDPAPER |
| WALLS | ALUMINUM | PRE-FIN | HATCH ADJACENT MATERIAL COLOR TO MATCH EIFS 'A' | | [Symbol] | EIFS COLOR - S COLOR: BROWN FINISH: SANDPAPER |
| WALLS | ALUMINUM | PRE-FIN | HATCH ADJACENT MATERIAL COLOR TO MATCH EIFS 'A' | | [Symbol] | EIFS COLOR - T COLOR: BROWN FINISH: SANDPAPER |
| WALLS | ALUMINUM | PRE-FIN | HATCH ADJACENT MATERIAL COLOR TO MATCH EIFS 'A' | | [Symbol] | EIFS COLOR - U COLOR: BROWN FINISH: SANDPAPER |
| WALLS | ALUMINUM | PRE-FIN | HATCH ADJACENT MATERIAL COLOR TO MATCH EIFS 'A' | | [Symbol] | EIFS COLOR - V COLOR: BROWN FINISH: SANDPAPER |
| WALLS | ALUMINUM | PRE-FIN | HATCH ADJACENT MATERIAL COLOR TO MATCH EIFS 'A' | | [Symbol] | EIFS COLOR - W COLOR: BROWN FINISH: SANDPAPER |
| WALLS | ALUMINUM | PRE-FIN | HATCH ADJACENT MATERIAL COLOR TO MATCH EIFS 'A' | | [Symbol] | EIFS COLOR - X COLOR: BROWN FINISH: SANDPAPER |
| WALLS | ALUMINUM | PRE-FIN | HATCH ADJACENT MATERIAL COLOR TO MATCH EIFS 'A' | | [Symbol] | EIFS COLOR - Y COLOR: BROWN FINISH: SANDPAPER |
| WALLS | ALUMINUM | PRE-FIN | HATCH ADJACENT MATERIAL COLOR TO MATCH EIFS 'A' | | [Symbol] | EIFS COLOR - Z COLOR: BROWN FINISH: SANDPAPER |

GENERAL ELEVATION AND SECTION NOTES:

- GUTTERS SHALL BE PRE-FINISHED ALUMINUM (SPRINKLE RECTANGULAR TYPE GUTTER STYLE 1) UNLESS AS REQUIRED FOR LOCAL CLIMATE CONDITIONS. IF PRE-FINISH GUTTERS SHALL HAVE CONTIGUOUS NON-CORROSIVE LEAF SCREEN.
- DOWNSPUTS SHALL BE PRE-FINISHED ALUMINUM (SIZES AS REQUIRED FOR LOCAL CLIMATE CONDITIONS). 3" DIA. TRIMKIT.
- DOWNSPUTS SHALL BE PRE-FINISHED ALUMINUM (SIZES AS REQUIRED FOR LOCAL CLIMATE CONDITIONS). 3" DIA. TRIMKIT.
- SEE DOOR AND WINDOW SCHEDULES FOR ADDITIONAL INFORMATION.
- PAINT ALL ROOFTOP INSULATED DEVICES AND PENETRATIONS TO MATCH ADJACENT ROOF MATERIAL.
- EIFS COLORS ARE INTEGRAL IN THE FINISH AND SHALL NOT BE A PAINTED FINISH.

- KEYED ELEVATION NOTES:**
- ▽ EIFS COLOR - A
 - ▽ EIFS COLOR - B
 - ▽ EIFS COLOR - C
 - ▽ EIFS COLOR - D
 - ▽ GUT. SHINGLED RIDGE VENT
 - ▽ STAIRS/ROOF METAL ROOF AS SCHEDULED
 - ▽ STONE JOINER
 - ▽ PRE-FINISHED ALUMINUM WINDOW AS SCHEDULED
 - ▽ PRE-FINISHED ALUMINUM ROOFING AS SCHEDULED
 - ▽ PRE-FINISHED ALUMINUM CORNING
 - ▽ PAINTED HOLLOW METAL DOOR AND FRAME
 - ▽ INTERNALLY ELIMINATED BUILDING FINISH
 - ▽ CONTIGUOUS PRE-FINISHED ALUMINUM GUTTER
 - ▽ PRE-FINISHED ALUMINUM GUTTER AND DOWNSPOUT
 - ▽ DRYER VENT COORDINATE WITH MECHANICAL REQUIREMENTS
 - ▽ CARD READER
 - ▽ EXTERIOR LIGHT AS SCHEDULED
 - ▽ ASPHALT ROOF SHINGLES AS SCHEDULED
 - ▽ DRYER RANGE EXHAUST COORDINATE WITH MECHANICAL REQUIREMENTS

ARCHITECTURAL GROUP III
201 S. Huganere St. Elkhart, Indiana 46514 • 574/293-0000



JOB TITLE

COMFORT SUITES
RAPID CITY, SOUTH DAKOTA
A NEW 88 ROOM HOTEL
FOR HILLCREST DEVELOPMENT, INC.

JOB NO.
06124

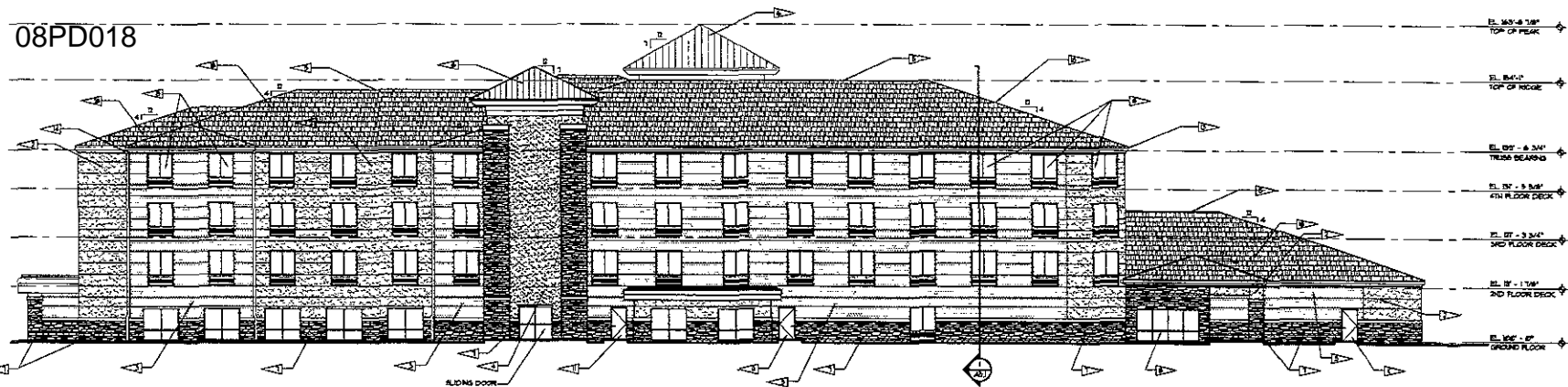
DATE
04/10/08

REVISIONS

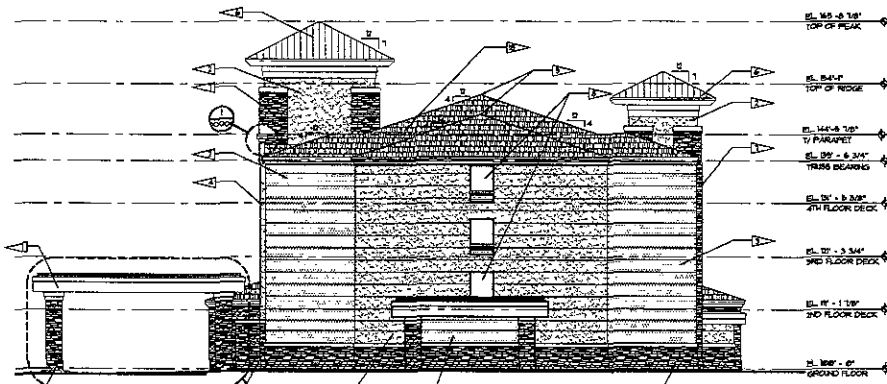
**PREPARED BY
FOR COMMENT ONLY**

SHEET NO.

A2.1
EXTERIOR ELEVATIONS



WEST ELEVATION
SCALE: 3/32" = 1'-0"



NORTH ELEVATION
SCALE: 3/32" = 1'-0"

| EXTERIOR FINISH SCHEDULE | | | | | |
|---------------------------|--------------------|----------|-------------------------|---|------------------|
| BUILDING ELEMENT | MATERIAL | FORM | COLOR | NOTES/FINISH MATERIAL NOTES | GRAPHIC SCHEDULE |
| BUILDING ROOF | EPA / STONE VENEER | VARIOUS | SEE GRAPHIC SCHEDULE | ALUMINA VENEER AS MANUFACTURED BY DRYVIT | [Symbol] |
| ROOFING | ASPHALT SHINGLES | | COLONIAL BLACK | BY EPA COLOR BY BURCH (PROLOG, PROFORMER COLOR PALETTE) | [Symbol] |
| ROOFING | CELSA | | COLONIAL RED | | [Symbol] |
| GUTTERS | ALUMINUM | PRE-FIN. | | CORNER ROOFING TO BE FROM THE GUTTER DESIGNER SERIES BY THE ATLAS ROOFING CORPORATION | [Symbol] |
| DOWNSPOUTS | ALUMINUM | PRE-FIN. | MATCH ADJACENT MATERIAL | | [Symbol] |
| COPINGS | ALUMINUM | PRE-FIN. | COLOR TO MATCH EPA 'A' | | [Symbol] |
| SMOKE CEILING AT ENTRANCE | EPS | SP FINE | EPA 'A' | DIYPAC GRILLS IS INTEGRAL TO BRICKWORK | [Symbol] |
| SMOKE CEILING AT ENTRANCE | EPS | SP FINE | EPA 'A' | | [Symbol] |
| SHOULDER | ALUMINUM | PRE-FIN. | DURANODE | | [Symbol] |
| METAL GRILLES | ALUMINUM | PRE-FIN. | DURANODE | | [Symbol] |
| MECHANICAL ENCLOSURE | ALUM. | PRE-FIN. | MATCH ADJACENT MATERIAL | EXTERNAL ROOF BY PETERSEN ALUMINUM CORPORATION OR EQUAL | [Symbol] |

GENERAL ELEVATION AND SECTION NOTES:

- GUTTERS SHALL BE PRE-FINISHED ALUMINUM BRUSH RECTANGULAR TYPE (GUTTER STYLE 1) USED AS REQUIRED FOR LOCAL CLIMATE CONDITIONS. 1" FINISH HEIGHT GUTTERS SHALL HAVE CONTINUOUS NON-CORROSIVE LEAF SLOPES.
- DOWNSPOUTS SHALL BE PRE-FINISHED ALUMINUM USED AS REQUIRED FOR LOCAL CLIMATE CONDITIONS. 14" FINISH.
- DOWNSPOUT ROOF AND EXPOSED PORTIONS OF UNDERDRAIN STORM WATER PIPE SHALL BE PAINTED TO MATCH CORNERPIECE.
- SEE DOOR AND WINDOW SCHEDULE FOR ADDITIONAL INFORMATION.
- PAINT ALL RECEPTION HEATED DEVICES AND PENETRATIONS TO MATCH ADJACENT ROOF MATERIAL.
- EPA COLORS ARE INTEGRAL IN THE FINISH AND SHALL NOT BE A PAINTED FINISH.

- KEYED ELEVATION NOTES:**
- ▽ EPA COLOR - A
 - ▽ EPA COLOR - B
 - ▽ EPA COLOR - C
 - ▽ EPA COLOR - D
 - ▽ EPA COLOR - E
 - ▽ CONT. SHINGLED ROOF VENT AS SCHEDULED
 - ▽ STANDING SEAM METAL ROOF AS SCHEDULED
 - ▽ STONE VENEER
 - ▽ PRE-FINISHED ALUMINUM ENDOUR AS SCHEDULED
 - ▽ PRE-FINISHED ALUMINUM THROUGHOUT AS SCHEDULED
 - ▽ PRE-FINISHED ALUMINUM COPING AS SCHEDULED
 - ▽ PAINTED HOLLOW METAL DOOR AND FRAME
 - ▽ INTERNALLY ILLUMINATED BUILDING SIGNAGE
 - ▽ CONTROLS PRE-FINISHED ALUMINUM BUTTER
 - ▽ PRE-FINISHED ALUMINUM GUTTER AND DOWNSPOUT
 - ▽ DRYER VENT COORDINATE WITH MECHANICAL REQUIREMENTS
 - ▽ CARD READER
 - ▽ EXTERIOR LIGHT AS SCHEDULED
 - ▽ ASPHALT ROOF MANGLER AS SCHEDULED
 - ▽ DRYER INTAKE LOWER COORD. WITH MECHANICAL REQUIREMENTS



JOB TITLE

COMFORT SUITES
RAPID CITY, SOUTH DAKOTA
A NEW 88 ROOM HOTEL
FOR HILLCREST DEVELOPMENT, INC.

JOB NO.
06124

DATE
04/10/08

REVISIONS

FREE PLAN SET FOR CONSTRUCTION

SHEET NO.

A2.2
EXTERIOR ELEVATIONS