

08CA013

FUTURE LAND USE MAP OF

LOTS 1-8 OF BLOCK 1; LOTS 1-8 OF BLOCK 2; LOTS 1-33 OF BLOCK 3;
TRACTS A, B, C, & D OF BLOCK 4; & DRAINAGE LOT 1,

HOMESTEAD PLAZA SUBDIVISION

AND DEDICATED RIGHT-OF-WAY OF AVENUE A, BIG SKY DRIVE, CHARLOTTE COURT,
EMILY LANE, ESTELLE COURT, HOMESTEAD STREET, & NEEL STREET

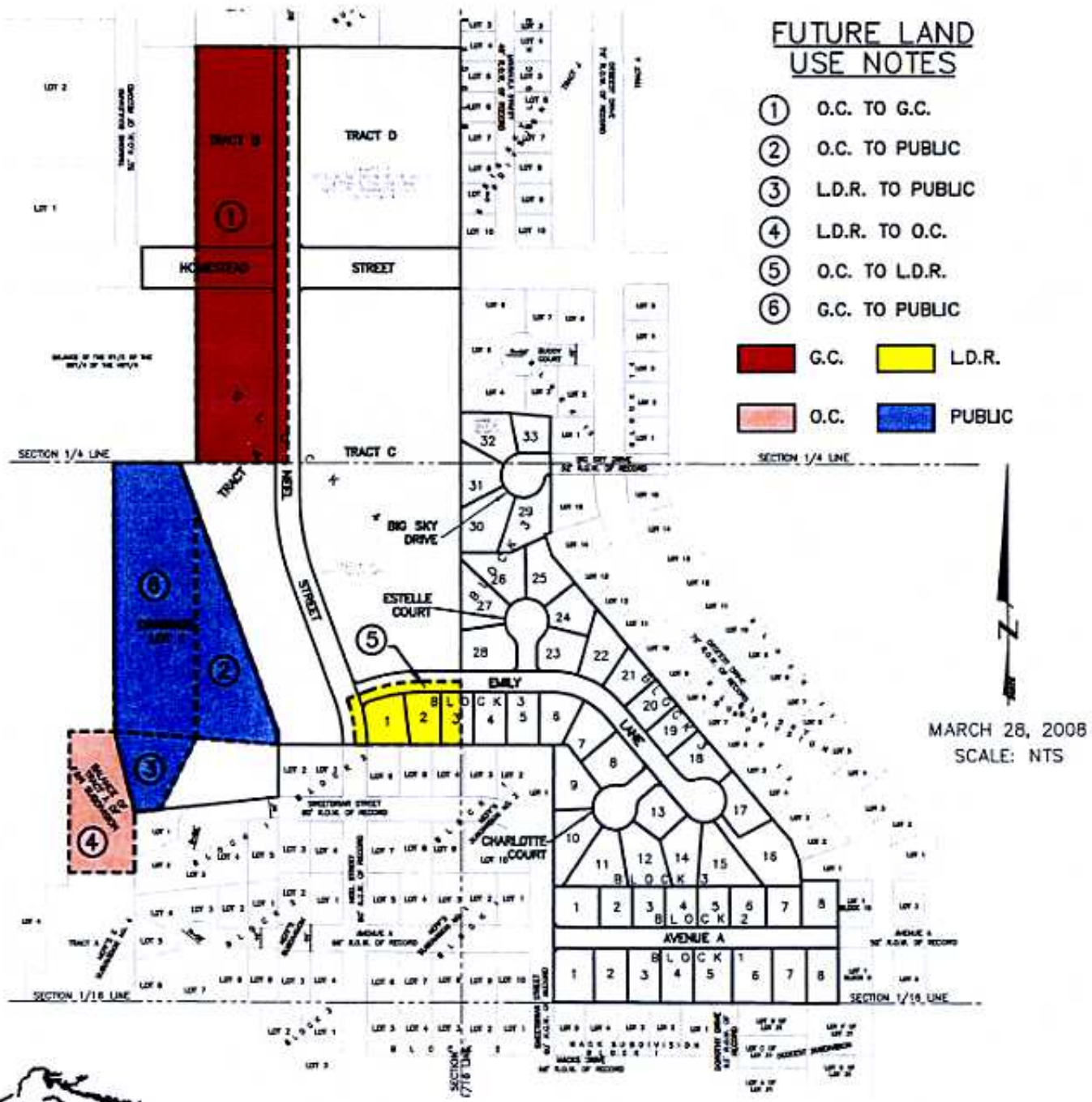
(formerly A Portion of Tract A of F&N Subdivision, Balance of the E1/2 of the SW1/4 of the NW1/4,
& Balance of the SE1/4 of the NW1/4)

LOCATED IN THE S1/2 OF THE NW1/4 &

IN THE N1/2 OF THE SW1/4

SECTION 3, T1N, R8E, BHM

RAPID CITY, PENNINGTON COUNTY, SOUTH DAKOTA



FUTURE LAND USE NOTES

- ① O.C. TO G.C.
- ② O.C. TO PUBLIC
- ③ L.D.R. TO PUBLIC
- ④ L.D.R. TO O.C.
- ⑤ O.C. TO L.D.R.
- ⑥ G.C. TO PUBLIC

 G.C.	 L.D.R.
 O.C.	 PUBLIC

MARCH 28, 2008
SCALE: NTS



Renner & Associates, LLC.

616 Sixth St. • Rapid City, SD 57701 • 605/721-7310
 FAX: 605/721-7313 • E-MAIL: Gary@RennerAssoc.com
 • Spearfish 605/717-0016 •