

LOTS 1 THROUGH 5, ENGESSER SUBDIVISION

(formerly the E 1/2 of the SE 1/4, less Lot H1 of the NE 1/4 of the SE 1/4, less Lot A of the NE 1/4 of the SE 1/4, less Lot PE1 of the NE 1/4 of the SE 1/4, and less a portion of a South Dakota Owned Railroad Right-Of-Way all in Section 24, T1N, R8E, B.H.M.)

LOCATED IN THE E 1/2 OF THE SE 1/4,
SECTION 24, T1N, R8E, B.H.M.
PENNINGTON COUNTY, SOUTH DAKOTA

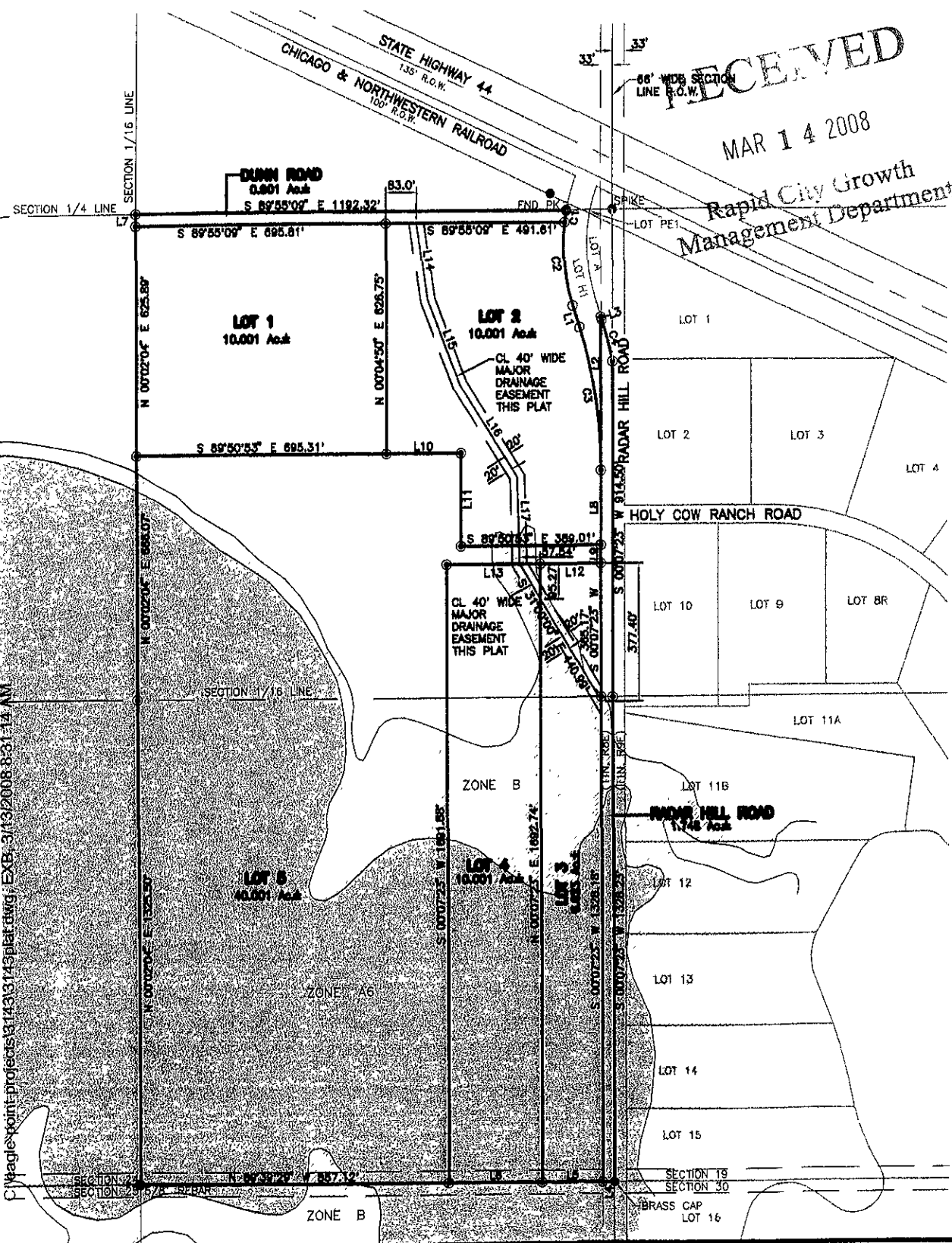
RECEIVED

MAR 14 2008

Rapid City Growth
Management Department



MARCH 12, 2008
N.T.S.



C:\maglev\point-projects\3143\3143\plat.dwg; EXB; 3/13/2008 8:21:14 AM