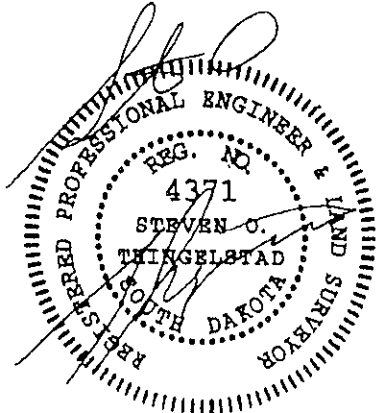
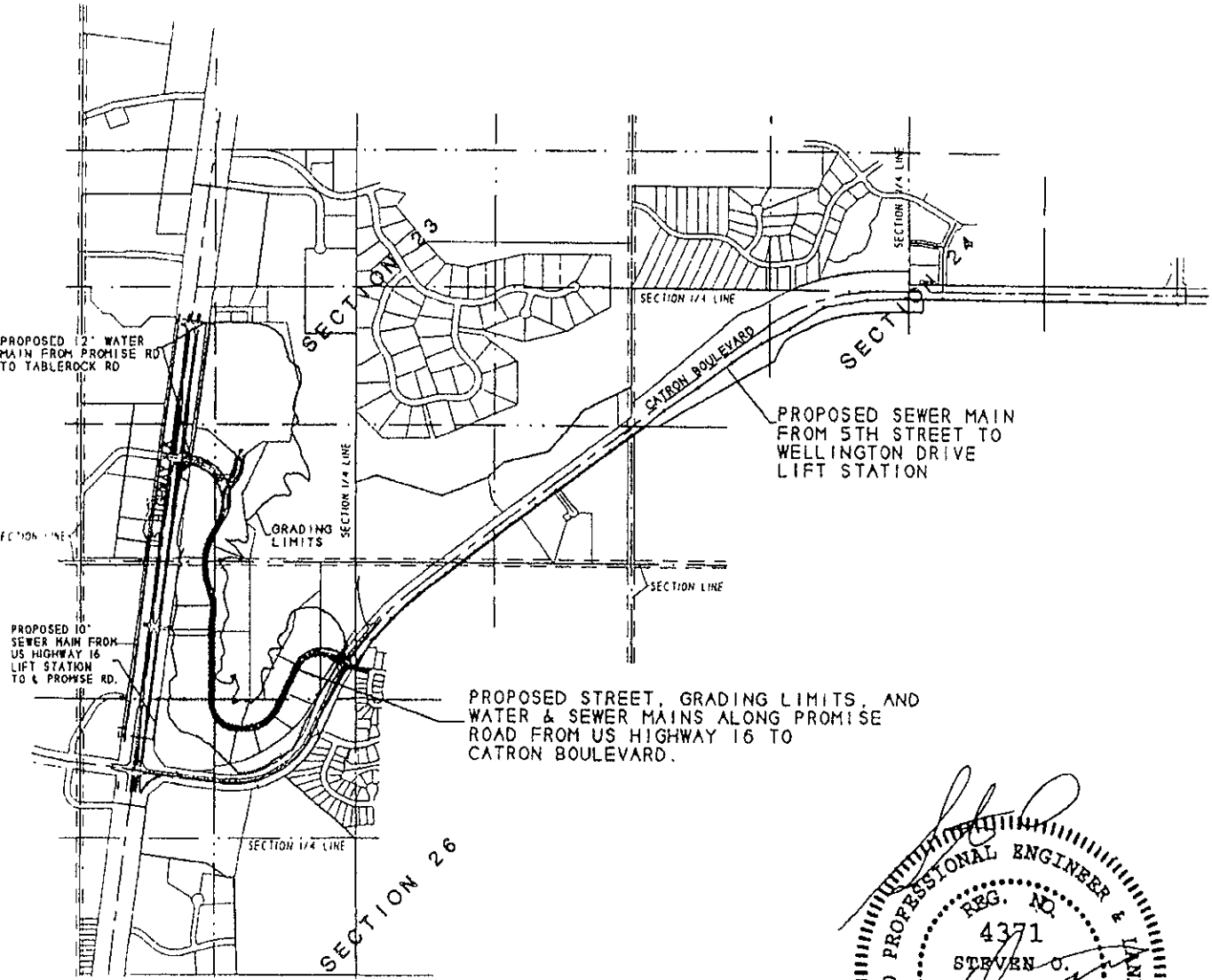


EXHIBIT
 OF
 TAX INCREMENT FINANCING (TIF) DISTRICT
 IMPROVEMENTS
 LOCATED IN SECTIONS 23, 24 & 26,
 T1N, R7E, RAPID CITY,
 PENNINGTON COUNTY, SOUTH DAKOTA



SCALE: 1" = 1500'
 MAY 10, 2007

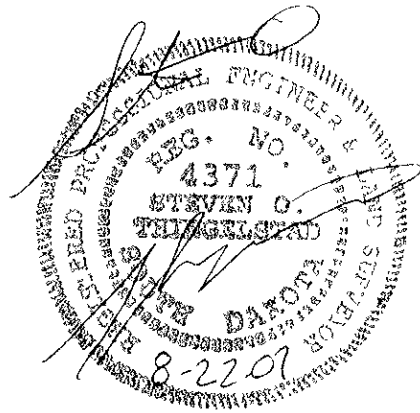
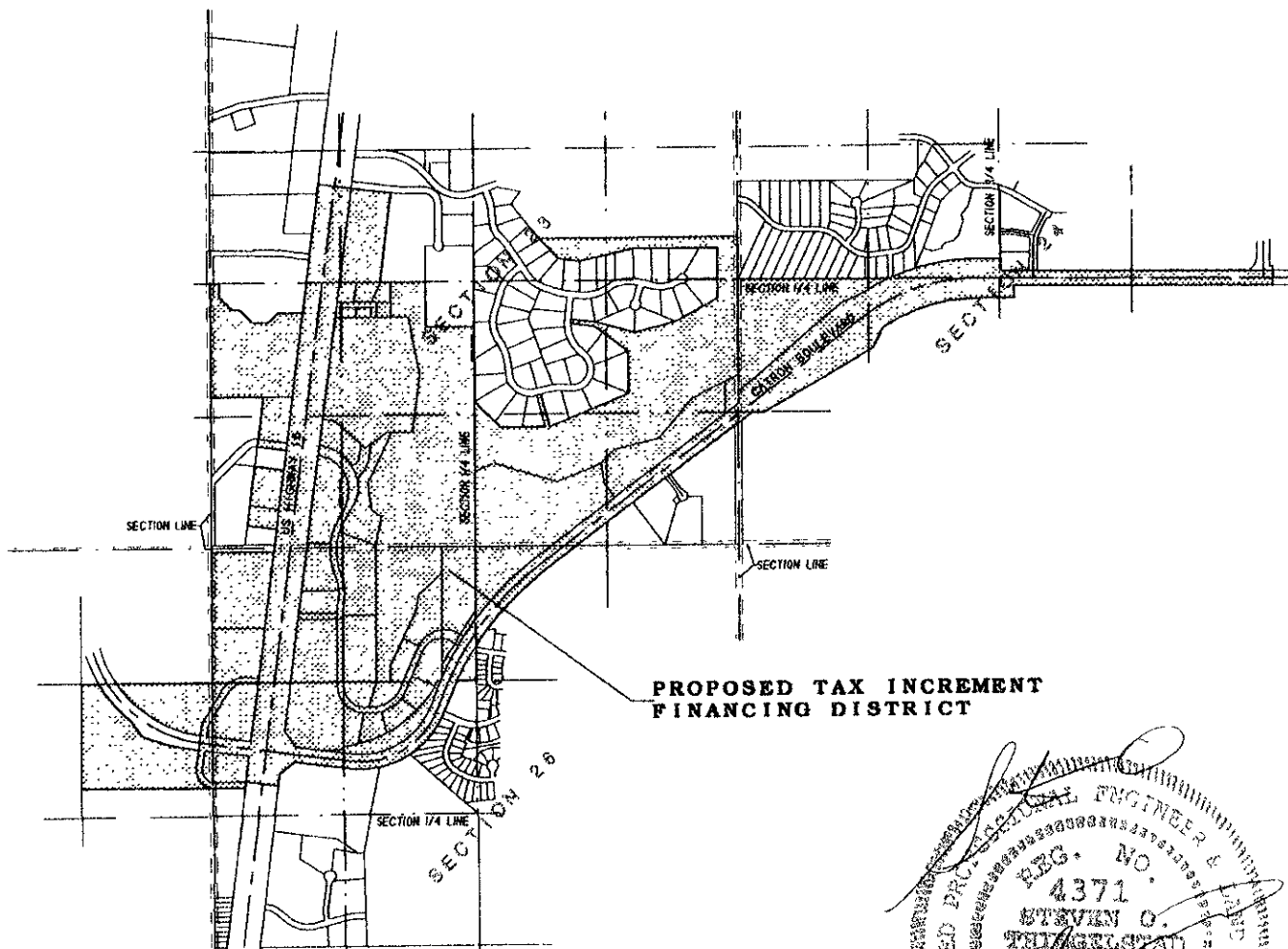


BRITTON ENGINEERING & LAND SURVEYING, INC
 8035 BLACK HAWK ROAD, SUITE 5
 BLACK HAWK, SOUTH DAKOTA 57718
 TELEPHONE: (605) 716-7988

EXHIBIT
OF
TAX INCREMENT FINANCING (TIF) DISTRICT
LOCATED IN SECTIONS 23, 24 & 26,
T1N, R7E, RAPID CITY
PENNINGTON COUNTY, SOUTH DAKOTA



SCALE: 1" = 1800'
MAY 10, 2007



BRITTON ENGINEERING & LAND SURVEYING, INC.
8035 BLACK HAWK ROAD, SUITE 5,
BLACK HAWK, SOUTH DAKOTA 57718
TELEPHONE (605) 716-7988

Dakota Canyon Nature Preserve

Rapid City, South Dakota

PROJECT NO. RD1088
FILE NAME: 02299-SC1
DATE: JULY 23, 2001

